

Welcome to

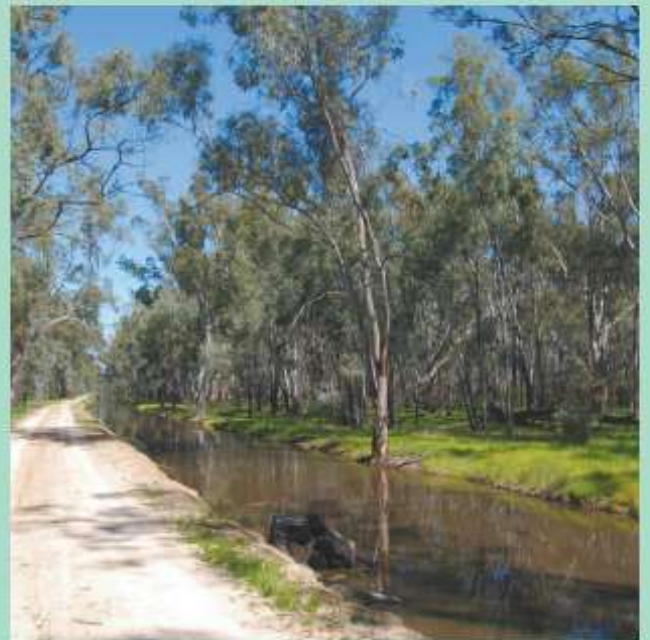
KANYAPELLA BASIN



11km east of
Echuca
Victoria

About Kanyapella Basin

- Managed cooperatively between the Department of Sustainability and Environment, Parks Victoria and Goulburn-Murray Water, with support from other agencies, community groups and local landowners
- It covers 2,950 hectares
- Functions as a flood retardation basin
- Receives water primarily from regional drains servicing the irrigation area
- Infrastructure completed to allow appropriate flood regimes
- Supports threatened flora and fauna
- Provides breeding habitat for colonial waterbirds
- Contains cultural heritage sites
- Provides opportunities for recreational activities



Tongala outfall drain

Who is involved with Kanyapella?

Numerous individuals, special interest groups and agencies have, to varying degrees, interest in activities at Kanyapella Basin. Key Stakeholders are those with direct land management responsibilities – Department of Sustainability and Environment, Parks Victoria and Goulburn-Murray Water. General Stakeholders are those with a keen interest in the development of the Environmental Management Plan but with no direct land management responsibilities. This includes Department of Primary Industries, Goulburn Broken Catchment Management Authority, Shire of Campaspe, Yorta Yorta Aboriginal Corporation, Field and Game Australia, Koyuga-Kanyapella Landcare Group, Bird Observation and Conservation Australia and local landowners.



Yambuna Creek

Partnership Acknowledgement

- Department of Sustainability and Environment
- Parks Victoria
- Goulburn-Murray Water
- Department of Primary Industries
- Goulburn Broken Catchment Management Authority
- Shire of Campaspe
- Yorta Yorta Nation Aboriginal Corporation
- Field and Game Australia
- Koyuga-Kanyapella Landcare Group
- Bird Observation and Conservation Australia
- Local landowners



CARING
FOR
OUR
COUNTRY



**GOULBURN
BROKEN**
CATCHMENT
MANAGEMENT
AUTHORITY

Front Cover:

Digital image courtesy of DPI and DSE

This brochure was created in 2011 by the Department of Primary Industries and printed by GV Printing Services (now known as Edge Print).

KANYAPELLA BASIN WILDLIFE AREA



Sites of interest

- 1. Black Box Woodland**
Eucalyptus largiflorens
Conservation Status - Endangered
- 2. Warrigal Creek Regulator**
Goulburn-Murray Water infrastructure to manage flood events
- 3. River Red Gum Forest**
Eucalyptus camaldulensis
Conservation Status - Vulnerable to Depleted
- 4. Open Wetland Area**
Dominated by rushes, sedges and reeds.
Conservation Status - Depleted
- 5. Yambuna Creek Regulator**
Goulburn-Murray Water infrastructure to manage flood events
- 6. Landcare Revegetation**
Projects completed in 2009 and 2010 by the Koyuga-Kanyapella Landcare Group

Where is Kanyapella?

Kanyapella Basin is located 11km east of Echuca, Victoria (14454° E, 3609° S), on the floodplain of the Lower Goulburn and Murray Rivers and covers an area of 2,950 hectares.

Visitors have restricted access to Kanyapella Basin Wildlife Area via a number of unsealed roads, including Mitchell Road, Watson Road, Castle Road, Fraser Road and Tehan Road. All tracks are predominantly clay and are hazardous when wet. Many of the tracks are suitable for four-wheel drive vehicles only.



Flora recorded at Kanyapella

- Wallaby Grass (*Austrodanthonia* spp)
- New Holland Daisy (*Vittadinia* spp)
- Early Nancy (*Wumbea* spp)
- Sunrays (*Rhodanthe* spp)
- Tangled Lignum (*Muehlenbeckia floranta*)
- Nardoo (*Marsilea* spp)
- Flax (*Linum* spp)
- Goodenia (*Goodenia* spp)
- Nodding Saltbush (*Einaida nutans*)
- Poong'ort (*Carex tereticaulis*)
- Woodland Swamp Daisy (*Brachyscome dasyleuca* var. *gracilis*)
- Berry Saltbush (*Atriplex semibaccata*)
- Silver Wattle (*Acacia dealbata*)
- Grey Box (*Eucalyptus microcarpa*)
- River Red Gum (*Eucalyptus camaldulensis*)
- Black Box (*Eucalyptus largiflorens*)



Goodenia (*Goodenia* spp)

Fauna recorded at Kanyapella

Common species

- Red-rumped Parrot (*Psephodes haematonotus*)
- Yellow Rosella (*Platycercus elegans flavescens*)
- Brown Treecreeper (*Climacteris picumnus*)
- Superb Fairy-wren (*Malurus cyaneus*)
- Striated Pardalote (*Pardalotus striatus*)
- Western Gerygone (*Gerygone fusca*)
- Yellow-rumped Thornbill (*Acanthiza chrysorrhoa*)
- White-plumed Honeyeater (*Lichenostomus penicillatus*)
- Red-capped Robin (*Petroica goodenovii*)
- Wedge-tailed Eagle (*Aquila audax*)
- Eastern Brown Snake (*Pseudo textilis*)
- Tree Goanna (*Varanus varius*)
- Long Necked Tortoise (*Chelodina longicollis*)
- Common Eastern Froglet (*Ranidella signifera*)
- Yellow-billed Spoonbill (*Platalea flavipes*)

Uncommon or threatened species

- Bush Stone-curlew (*Burhinus grallarius*)
- Musk Duck (*Biziura lobata*)
- Painted Snipe (*Rostratula benghalensis*)
- Barking Owl (*Ninox connivens*)
- Rainbow Bee-eater (*Meropops ornatus*)
- Royal Spoonbill (*Platalea regia*)
- Brolga (*Grus rubicundus*)
- Azure Kingfisher (*Alcedo azurea*)
- Yellow-footed Antechinus (*Antechinus flavipes*)
- Nankeen Night Heron (*Nycticorax caledonicus*)

Many species of waterbirds visit Kanyapella Basin during flood events.

Caution

- Hunting only permitted in open season
- Areas are subject to flooding
- Roads/tracks/levee banks are unsealed and can be inaccessible to 4-wheel drive vehicles when wet
- Vehicles are not permitted off-road
- Trail bikes must be registered
- Firewood collection is prohibited
- Rubbish dumping is prohibited
- No facilities are provided (parking, toilets, rubbish bins etc)