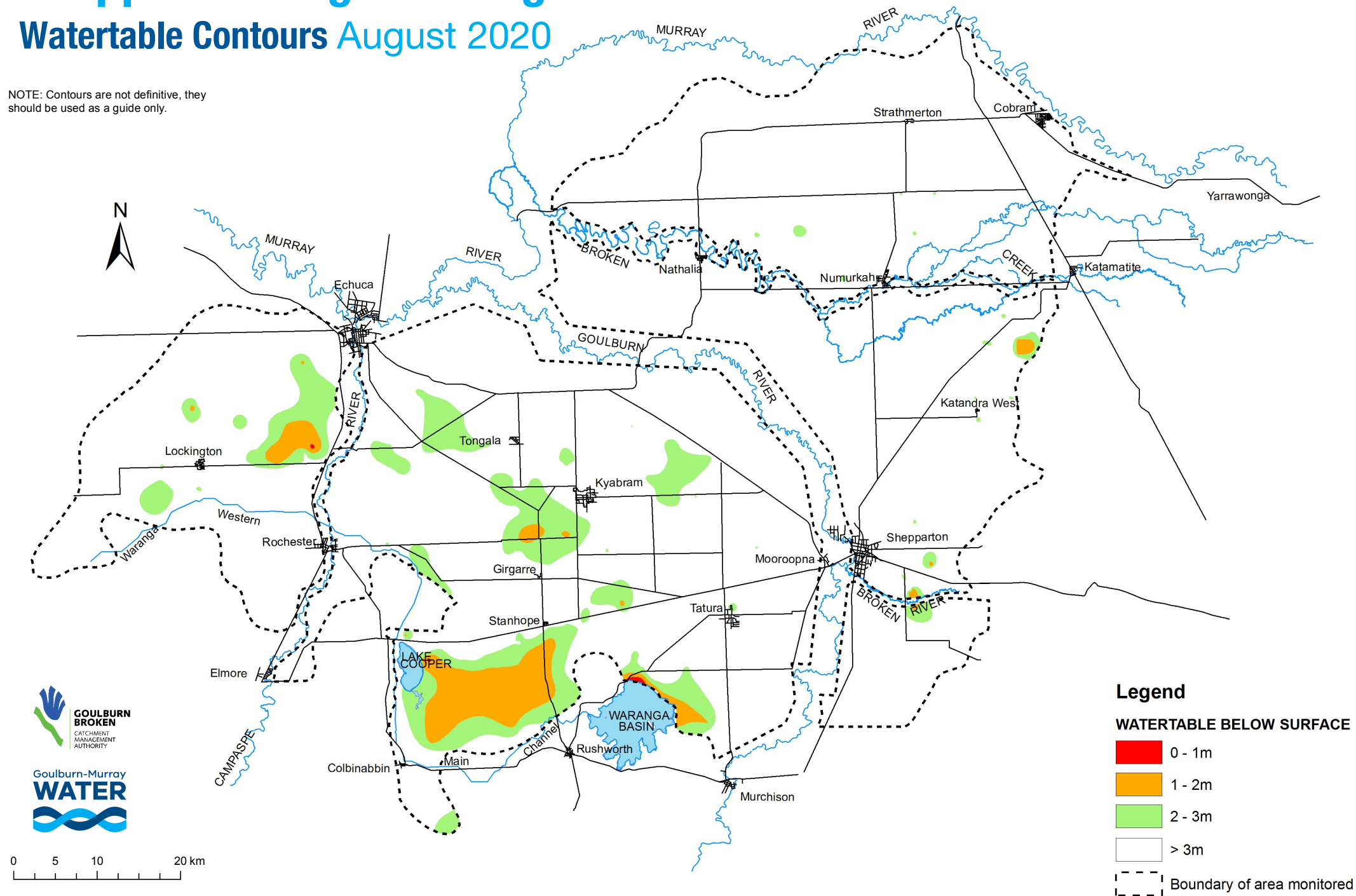


Shepparton Irrigation Region

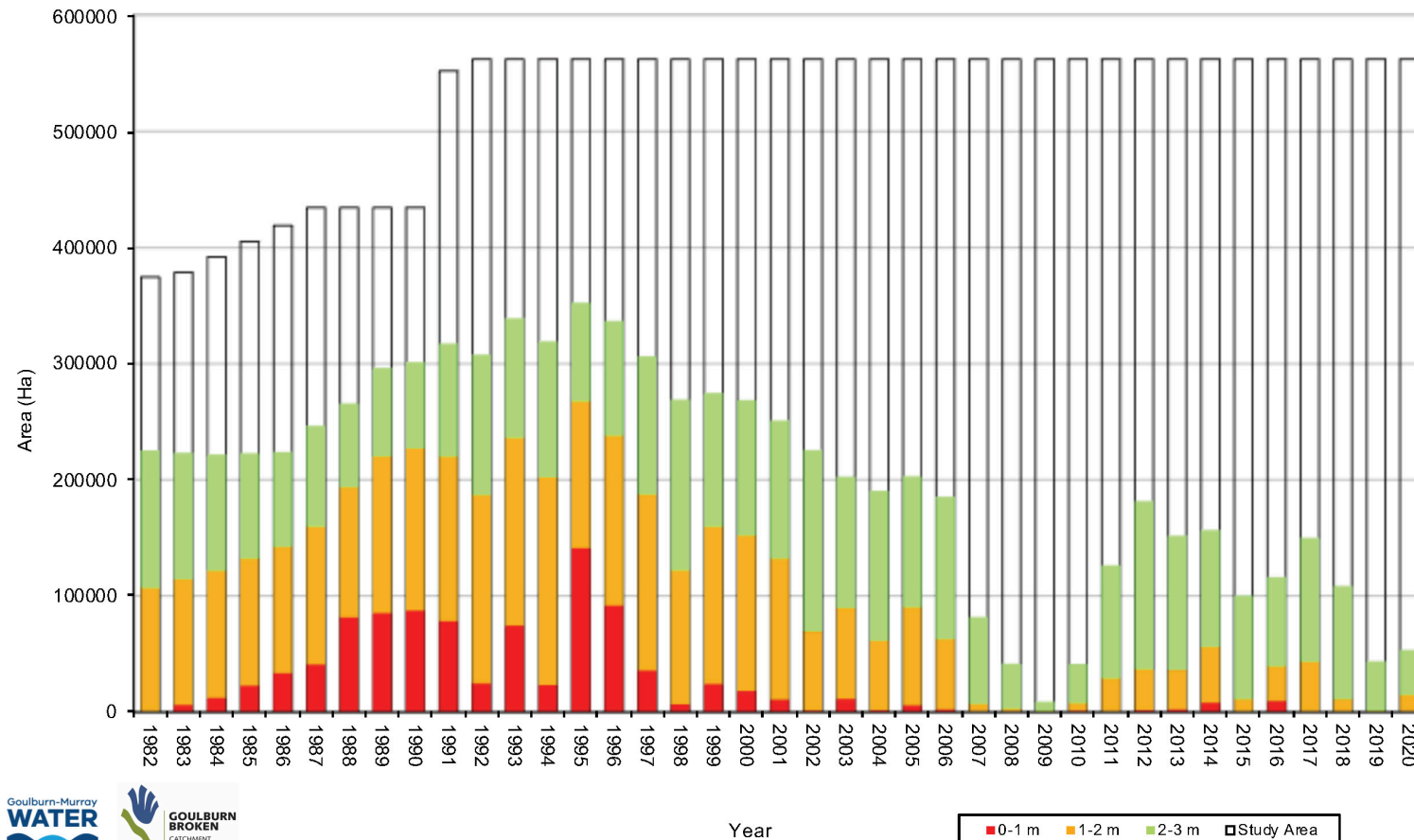
Watertable Contours August 2020

NOTE: Contours are not definitive, they should be used as a guide only.



Shepparton Irrigation Region

August Depth to Watertable Areas: 1982-2020



The Shepparton Irrigation Region Watertable Contours map (on reverse page) was produced using information from 1,000 groundwater level monitoring bores. The graph shows the total study area and a comparison of the areas of watertable at various depths from 1982 to 2020. High watertables (less than two metres below surface) and their associated salinity issues will remain a significant risk except in times of extended drought.

For further information please contact Goulburn-Murray Water on 1800 013 357.

