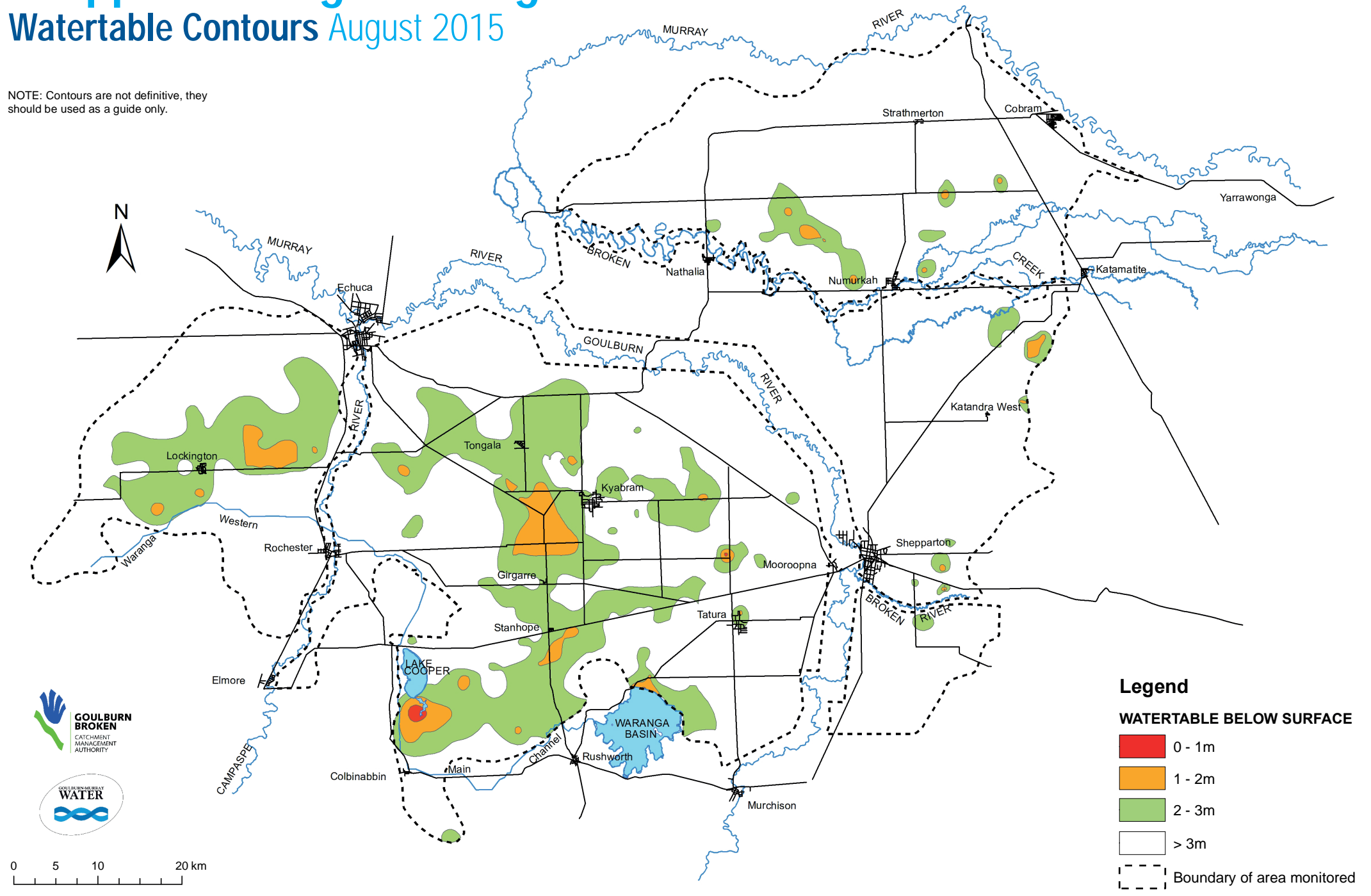


# Shepparton Irrigation Region

## Watertable Contours August 2015

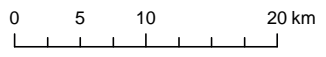
NOTE: Contours are not definitive, they should be used as a guide only.



**Legend**

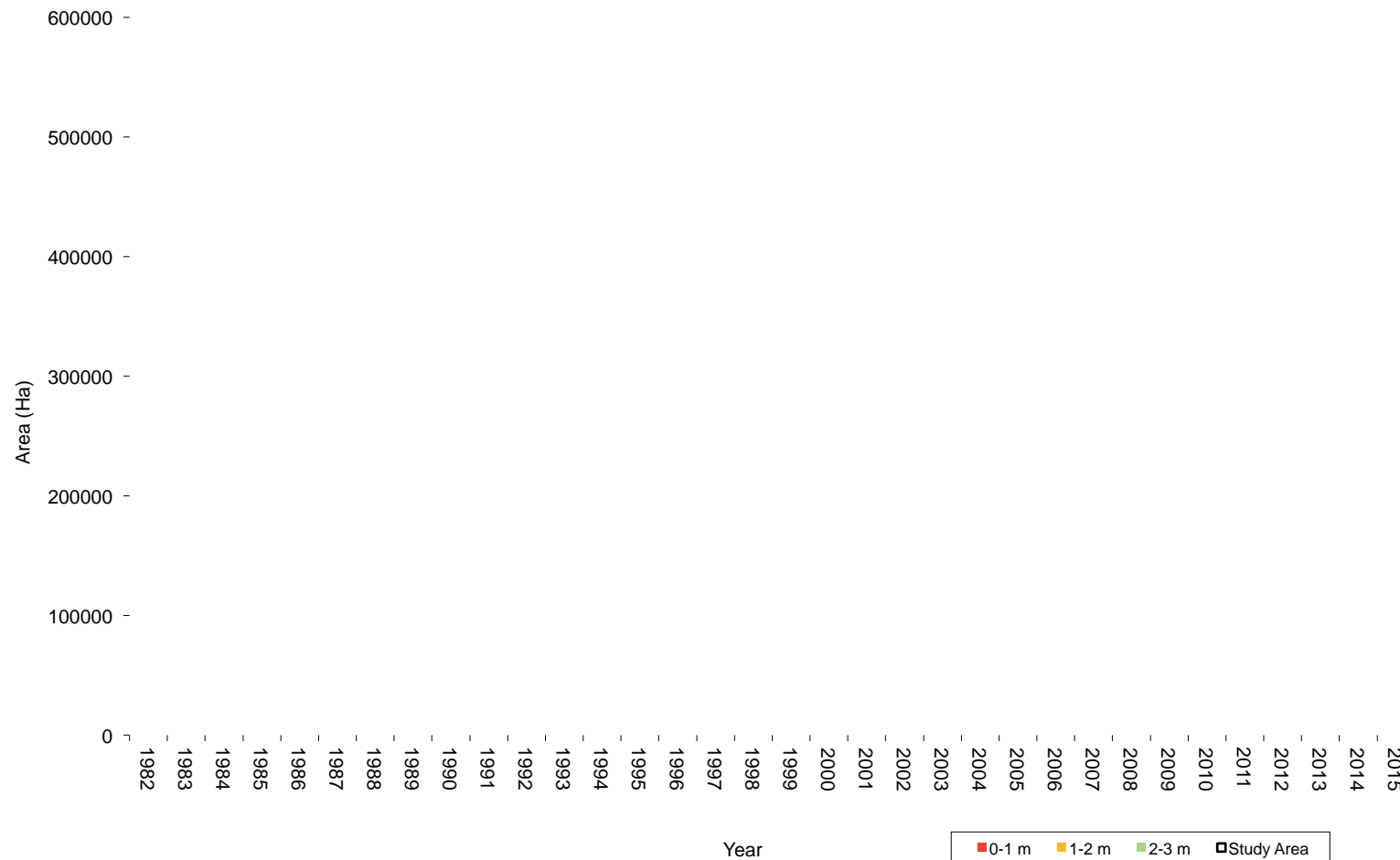
**WATERTABLE BELOW SURFACE**

- 0 - 1m
- 1 - 2m
- 2 - 3m
- > 3m
- Boundary of area monitored



# Shepparton Irrigation Region

## August Depth to Watertable Areas: 1982-2015



The Shepparton Irrigation Region Watertable Contours map (on reverse page) was produced using information from 1,400 groundwater level monitoring bores. The graph shows the total study area and a comparison of the areas of watertable at various depths from 1982 to 2015. High watertables (less than two metres below surface) and their associated salinity issues will remain a significant risk except in times of extended drought.

For further information please contact Goulburn-Murray Water on 1800 013 357.