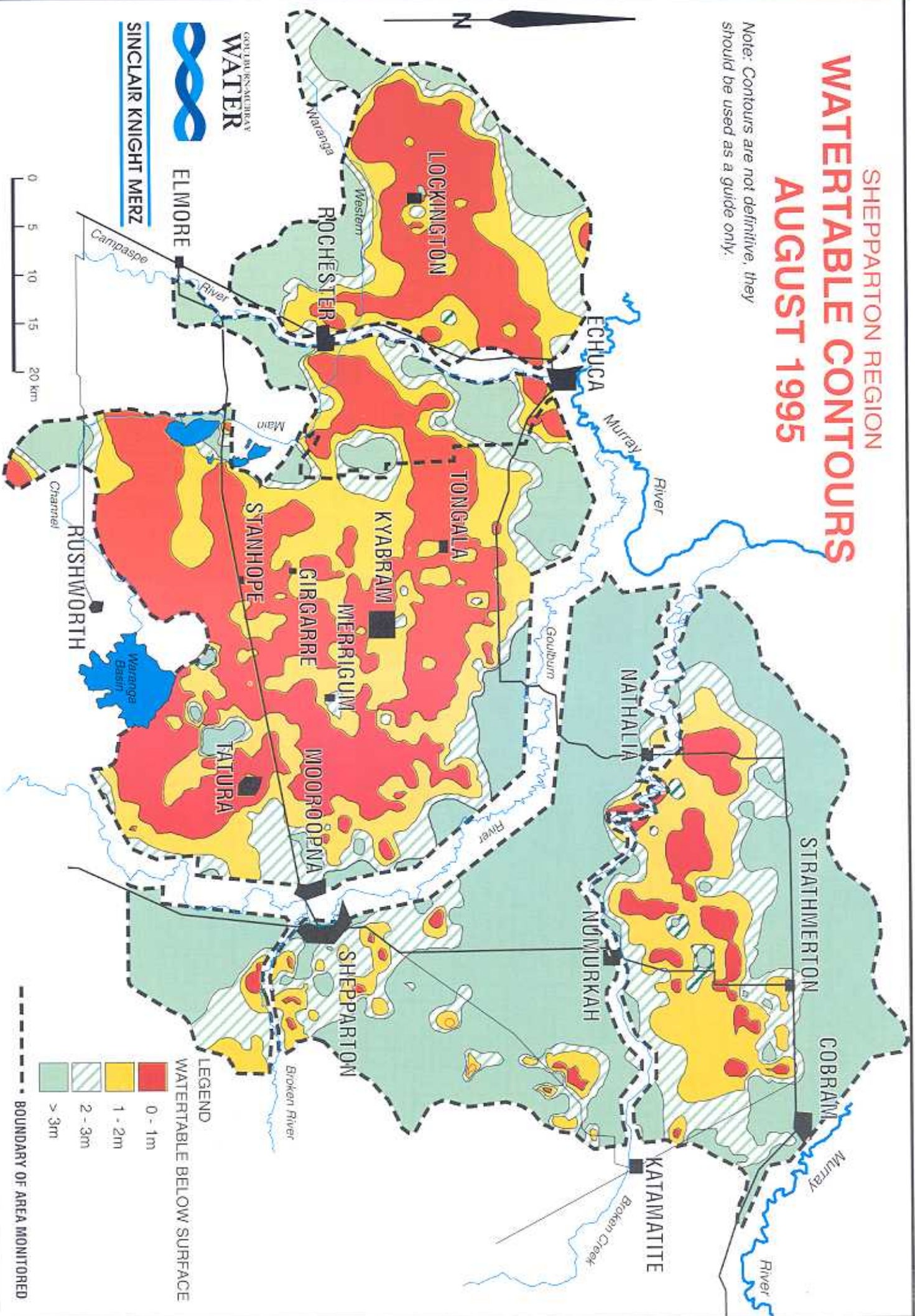


# SHEPPARTON REGION WATERTABLE CONTOURS AUGUST 1995

Note: Contours are not definitive, they should be used as a guide only.



GODFREY & CALVERT'S  
WATER



ELMORE

SINCLAIR KNIGHT MERZ

# THE UNDERGROUND FLOOD (Part 7, 1995)

On the reverse side of this leaflet is the August 1995 Watertable Map of the Shepparton Irrigation Area. This map has been prepared for Goulburn-Murray Water by Sinclair Knight Merz at Tatura from information collected from a network of about 2000 bores in the region.

The graphs on this page show a number of points about the watertables in the area. The upper graph shows the total area under study from 1982 - 1995 and the areas of watertable in each of the years at 0-1m, 1-2m and 2-3m in each of the sub regions in 1995. It is clear from the map and graphs that watertables are continuing to rise.

The Shepparton Irrigation Management Plan, developed by the community, is being implemented to tackle this serious problem. Through the salinity program, the Irrigation Committee has been able to introduce incentives for community surface drains, groundwater pumping, whole farm planning and awareness programs like Watertable Watch.

The community must act now to reduce the "Underground Flood." Contact your local office of Goulburn-Murray Water, Department of Conservation and Natural Resources or Agriculture Victoria for more information.

