

Bogies and Beyond

Information and financial assistance For land owners and managers



Get Involved:

1. Read this brochure
2. Complete the Expressions of Interest form, and
3. Return to Karenb@gbcma.vic.gov.au
4. Or contact Karen Brisbane-Bullock on **0409 955 396** to discuss your project

We will make contact with you as soon as possible to discuss your project and arrange a time to visit your site if needed.

What we can assist you with:

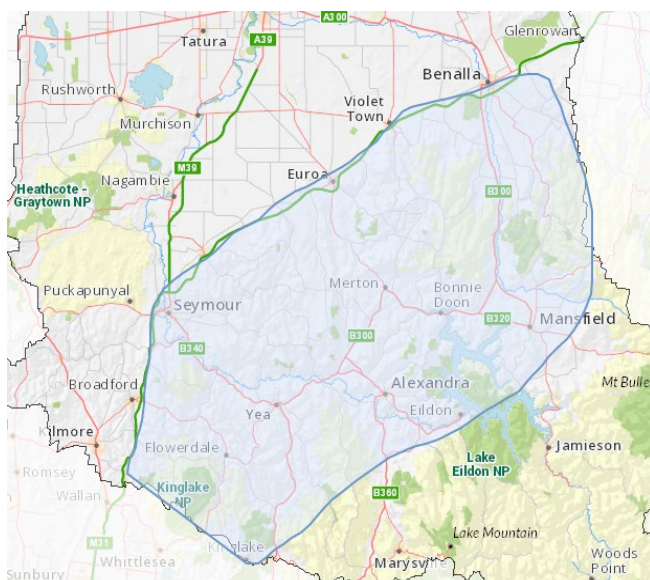
We are looking to support a range of actions including fencing to reduce stock access, revegetation, and weed and pest animal control to improve a wide range of habitats such as:

1. Waterways/Riparian areas
2. Wetlands
3. Rocky Outcrops
4. Farm Dams
5. Wildlife Corridors

About the Bogies and Beyond Project:

The Goulburn Broken CMA Bogies and Beyond project provides financial and technical support to landholders, and land managers to undertake works to protect and improve areas of native vegetation.

If you own or manage land within or near the area shown on the map below you may be eligible for support.



Environment,
Land, Water
and Planning

This project is supported by the Goulburn Broken CMA, through funding from the Victorian Government's Our Catchments Our Communities

Bogies and Beyond Expression of Interest



Name

Postal Address

Telephone

Email

Address or approximate location of site(s) you wish to protect (eg. 5km down Smiths Rd, Smithsville)

Tell us about the site you want to protect ...

Approximately how big is the site? (ha / acres or length / width if it is a linear site eg. along a river)

How is the site currently used? (eg. cropping, grazing, dairy)

What type of site is it? (eg. wetland, waterway, woodland, grassland)

What do you want to achieve at the site?

Privacy Statement: The Goulburn Broken Catchment Management Authority respects the privacy of your personal information. We collect and handle personal information responsibly and in conformity with the *Information Privacy Act 2000 (Vic)*. Personal information collected as part of this project will be handled in accordance with that Act. Your personal information will only be used for the purpose of assessing and administering your application and any future applications. You may seek to access your personal information by contacting Goulburn Broken Catchment Management Authority. If you have any questions about our privacy policy, please visit our website www.gbcma.vic.gov.au, or call us on (03) 5822 7700.

Please complete this form and send to Karen Brisbane-Bullock, Goulburn Broken CMA, PO Box 1752, Shepparton VIC 3630 or email Karenb@gbcma.vic.gov.au by 15th December 2021.