

Strategic Outcomes 2008/09

Welcome to the 2007/08 Landcare Annual Performance Story. It attempts to summarize the efforts of Landcare in the achievement of NRM issues and activities in 2007/08. It has been based on quarterly facilitator reports and annual group surveys undertaken by 55% of groups. It therefore only gives an insight into the activities of Landcare across the Goulburn Broken CMA and doesn't include activities undertaken as part of LAP's or all of the CMA funded Landcare projects.

Regional Catchment Strategy Targets

In 2007/08 Goulburn Broken Landcare activities have contributed to the following RCS targets:

- Manage weed invasion in riparian and in-stream areas.
- Addressing terrestrial and riparian habitat loss.
- Develop and implement Local Area Plans in riverine plains.
- Adapt farming systems to changed conditions
- Increase community weed/rabbit responsibility.
- Integrate weed/rabbit control into other NRM programs.
- Direct seed or regenerate 8000Ha of native vegetation.
- Implement Threatened Species and Recovery Plans.

Goulburn Broken Landcare Highlights

- 76 Landcare Groups and 7 Landcare Networks (3 in recess and 3 new groups)
- 58% of groups rated themselves "Healthy" while 10% were "Just hanging in there".
- GB Landcare conducted 297 meetings/Field Days involving 6,460 people.
- 3,064 people gave up 29,383hrs of their time to achieve NRM outcomes, including:
- Planting 655 Ha of trees
- Treating 6,224 Ha of weeds.
- Controlling 16,445 Ha of vermin
- Over \$1.5 Million dollars was sort through grants and \$1,264, 232 received.

Landcare activities addressed NRM issues such as, Pest Plants and Animals, Revegetation, Threatened Species, Soil Health, wetlands, Water Quality, Community Education and Roadside Vegetation Management.

For further information contact:

**Tony Kubeil - Regional Landcare Coordinator,
Goulburn Broken CMA**
89 Sydney Road, Benalla, 3672
Ph: **(03) 5761 1619**
www.landcare.net.au/goulburnbroken



Goulburn Broken Landcare
Annual Performance Story

2007-08

Implementation Committee Regional Summaries

Shepparton Irrigation Region (SIR)

The Shepparton Irrigation Region has the lowest average group health this year which reflects the strain the prolonged drought is having on groups. The number of groups who have submitted their data this year has increased.

Groups Submitting	18 (50%)
Area of responding groups	1,009,577 Ha
Average age of Landcare	1994
No. groups of rated Healthy	6 or 40%
Average Group Health	SADC
Number Meetings/Field days	178
• No Participants	7673
• Activity Details(Hours)	4720
• Trees Planted (Ha)	595
• Weed Control (Ha)	33
• Vermin Control (Ha)	N/A
Funding Applied	605, 482
Funding Received	581, 568
Funding Success %	96%

Highlights

- Revegetation program with Parks Victoria;
- Crouching Emu Project;
- Weed Management Program;
- Tree planting along Mullers;
- Celebration of Landcare week;
- School education programs.

Mid Goulburn Broken Region

Landcare in the Mid Goulburn Broken Region is looking optimistic with 60 per cent of groups moving forward. A staggering 72 per cent of groups submitted data this year so despite the drought and the 2009 Victorian Bushfires things are looking positive.

Groups Submitting	16 (72%)
Area of Responding Groups	597,408 Ha
Average Age of Landcare	1991
No. groups of rated Healthy	9 or 60%
Average Group Health	MF
Number Meetings/Field days	91
• No Participants	2183
• Activity Details (Hours)	6628
• Trees Planted (Ha)	19
• Weed Control (Ha)	710
• Vermin Control (Ha)	65
Funding Applied	525,107
Funding Received	292, 044
Funding Success %	55%

Highlights

- Bridge to Bridge Project;
- Received GBCMA Landcare Award;
- River Health and Water Quality Guide produced;
- Christmas and Community Drought Social Evening;
- Participation in Dung Beetle program;
- Demonstration Reach Project on Hollands Creek;
- Working with North East Water for Brolga Habitat;

Upper Goulburn Region

This year has been another fantastic year for Landcare in the Upper Goulburn region 87 per cent of the groups who responded to the survey rated themselves as "Healthy" which is a testament to the support and drive of the land care facilitators and the broader landcare community.

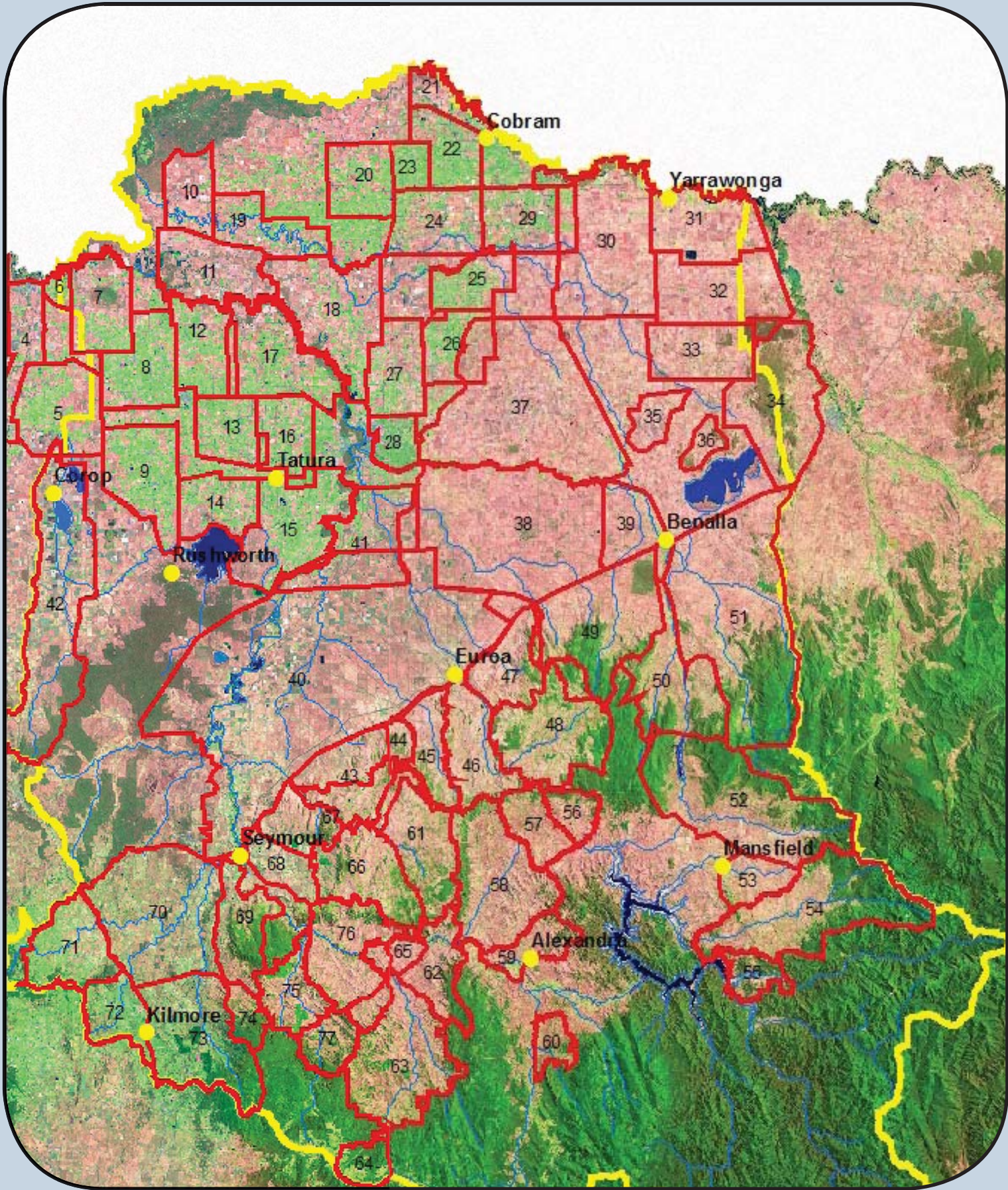
Groups Submitting	16 (59%)
Area of Responding Groups	275,028 Ha
Average Age of Landcare	1994
No. groups of rated Healthy	14 or 87%
Average Group Health	MF
Number Meetings/Field days	115
• No Participants	3188
• Activity Details(Hours)	13,596
• Trees Planted (Ha)	41
• Weed Control (Ha)	5481
• Vermin Control (Ha)	16,380
Funding Applied	562, 398
Funding Received	390, 620
Funding Success %	69%

Highlights

- Climate change dinner;
- Bog field day;
- Production of Merton History DVD;
- Big Tree competition;
- Global warming information session with ROB Gell;
- "Dorethy Dioxide" global warming column in Yea and Alexandra papers;
- Bush Stone Curlew information night;
- Booklet "A History of land settlement and landcare in the Granite Country".



GOULBURN BROKEN LANDCARE



Number	Landcare Group	Area (Ha)	No. Members	No Meetings Field days	Total Participation
Upper Goulburn Region - 25 Groups					
	Ancona Landcare Group	6175	34	1	20
	Dadyninga Catchment Cooperative	21051	92	7	87
	Delatite Landcare Group	39667		NOT AVAILABLE	
	East Killingworth Landcare Group	3109		NOT AVAILABLE	
	Eildon Township Landcare	850	10	3	24
	Flowerdale Junior Landcare Group	8262		NOT AVAILABLE	
	Ford Creek Land Management Group	8877		NOT AVAILABLE	
	Glenauroua Landcare Group	43300		NOT AVAILABLE	
	Highlands Landcare Group	21065	150	16	289
	Home Creek / Spring Creek Landcare Group	32197	30	1	23
	Howqua Valley Landcare Group	6850		NOT AVAILABLE	
	Hughes Creek Landcare Group	22667	22	5	136
	Kinglake Landcare Group	6080		NOT AVAILABLE	
	Merton Landcare Group	10427	140	14	130
	Molesworth Landcare Group	13272	10	3	10
	Nullavale Pyalong Landcare Group	17934		NOT AVAILABLE	
	Reedy Creek Landcare Group	5768		NOT AVAILABLE	
	South Cathedral /Cerberus Creek Landcare Group	5395		NOT AVAILABLE	
	Strath Creek Landcare Group	12376	118	6	950
	Sunday Creek/Dry Creek Landcare Group	31615	40	8	152
	Tallaroak Landcare Group	15283		NOT AVAILABLE	
	U.T. Creek Valley Landcare Group	8953	28	3	40
	Upper Hughes Creek Landcare Group	19830	120	6	148
	Whiteheads Creek Landcare Group	8996	47	15	464
	Willowmavin Landcare Group	11836	21	12	123
	Yea River Landcare Group	32433	34	12	538
	Yellow Creek / Dairy Creek Landcare Group	21285	20	3	54
Mid Goulburn Broken Region - 22 Groups					
	Balmattum/Sheans Creek Landcare Group	15378		NOT AVAILABLE	
	Burnt Creek Landcare Group	19329	180	3	108
	Burramine Tungamah Landcare Group	43737		NOT AVAILABLE	
	Cornella Implementation Committee	47461		NOT AVAILABLE	
	Creighton Creek Landcare Group	11952	60	4	34
	Devenish/Goorambat Landcare Group	6375	24	0	0
	Dookie Land Management Group	67405	50	3	100
	Goomalibee Landcare Group	11931	27	14	161
	Gooram Valley Landcare Group Inc.	17764	132	0	0
	Longwood East Landcare Group	3395	32	6	170
	Molyullah/Tatong Tree & Land Protection Group Inc.	68521	80	10	355
	Nagambie Landcare Group	161794	130	7	215
	O'Dea's Rd Landcare Group	2170	20	1	15
	Peechelba/Wilby/Boomahnmoonah Landcare Grc	25110		NOT AVAILABLE	
	Sheep Pen Creek Land Management Group	64034	200	7	146

Number	Landcare Group	Area (Ha)	No. Members	No Meetings Field days	Total Participation
	South Yarrawonga Landcare Group	21125	50	7	205
	Strathbogie Tableland Landcare Group Inc.	30343	40	9	147
	Swanpool & District Land Protection Group	24301	30	3	70
	Upper Broken Land Management Group	48110	30	NOT AVAILABLE	
	Waranga Land Protection Group			NOT AVAILABLE	
	Warby Ranges Landcare Group	48818	187	6	302
	Warrenbayne-Boho Land Protection Group	38151	67	11	155
Shepparton Irrigation Region - 33 Groups					
	Arcadia & District Landcare Group	23025	20	1	10
	Broken Creek Improvement Group	14675	26	0	0
	Bunbartha Kaarimba Landcare Group	30650	40	3	24
	Congupna Tallygaroopna Landcare Group	15487	29	11	98
	Corop Community Action Group			NOT AVAILABLE	
	Dhurringile & District Landcare Group	28767	43	25	253
	East Shepparton Landcare Group	7369		NOT AVAILABLE	
	Echuca Urban LCG	13373	20	9	127
	Echuca West Salinity & Landcare	13618	40	2	29
	Girgarre Stanhope LCG	21178	40	2	36
	Goulburn Murray Landcare Network	732260	61	55	6,414
	Harston Community Landcare Group	13249		NOT AVAILABLE	
	Invergordon & District Environment LCG	11460	25	4	24
	Katandra West Landcare Group			NOT AVAILABLE	
	Katunga Landcare	14515	5	2	10
	Kialla Lakes Landcare Group	450	30	3	50
	Koonoomoo Landcare Group	7220		NOT AVAILABLE	
	Kolupna Landcare Group	19987		NOT AVAILABLE	
	Koyuga-Kanyapella Landcare Group	16748	15	9	92
	Kyabram Landcare Group			NOT AVAILABLE	
	Lockington & District Landcare Group	28414	6	NOT AVAILABLE	
	Merrigum Landcare Group	12604		NOT AVAILABLE	
	Muckatah Landcare Group	18545	12	14	145
	Nanneella Timmering Landcare Group	22218		NOT AVAILABLE	
	Naring Landcare Network			NOT AVAILABLE	
	Nathalia Tree Group			NOT AVAILABLE	
	North West Mooroopna Land Management Group	27888	14	8	71
	Picola Land Management Group	11303		NOT AVAILABLE	
	Shepparton Mooropna Urban	3000	30	7	68
	Tatura Urban			NOT AVAILABLE	
	Tongala Landcare Group	17583		NOT AVAILABLE	
	Undera Landcare group	23005	10	5	51
	Wharparilla West Landcare Group	10612	25	NOT AVAILABLE	
	Wyna Landcare Group	14808	27	4	35
	Yarrawonga Urban	800	15	14	136
	Yarroweyah Watertable Management Group	12787		NOT AVAILABLE	