

# Expression of interest: Potential funding

To enhance & protect biodiversity on private land



Significant areas of the Goulburn Broken catchment's native vegetation is located on private land. This vegetation provides multiple benefits to landholders and the environment such as:

- Improved property values and aesthetics
- Wind and shade protection for stock and crops
- Food, shelter and 'stepping-stones' across the landscape for native animals
- Habitat for pollinating insects

The GB CMA regularly advocates for funding that could assist landholders to implement conservation activities on private land including:

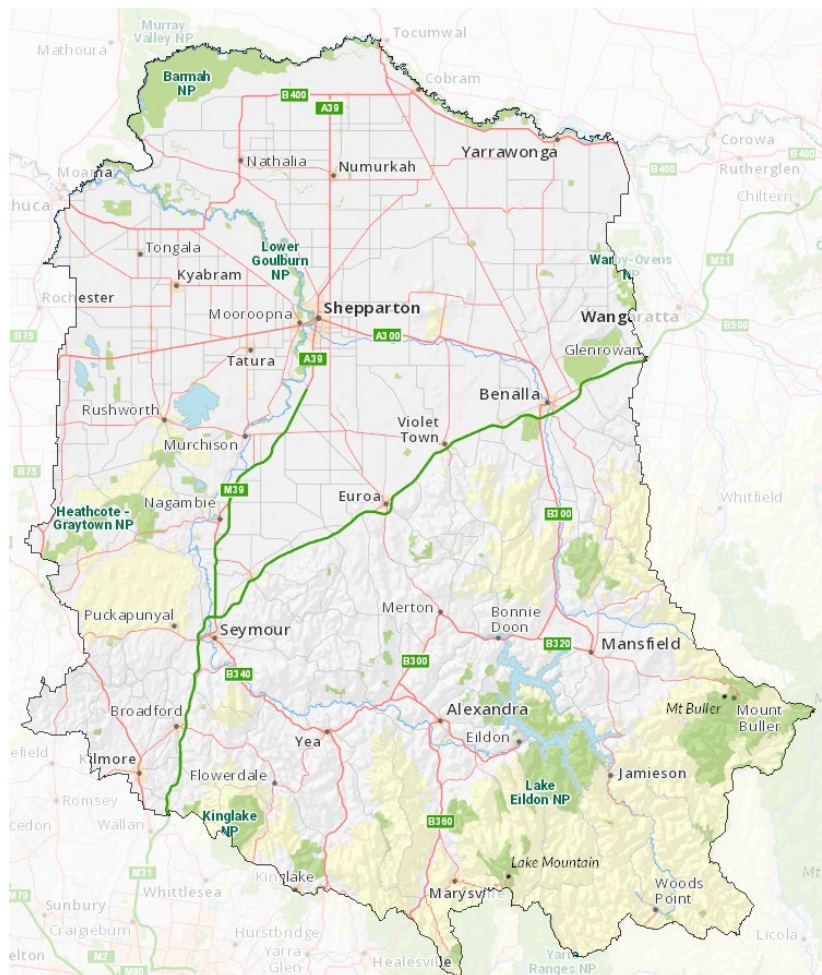
- Revegetation (direct seeding or planting)
- Pest plant and animal control
- Fencing of remnants and plantings

To be eligible for potential future funding, sites need to:

- Be in the Goulburn Broken catchment
- Preferably contain existing remnant vegetation (trees, shrubs, and/or grasses)
- Be of significant natural value or have the potential to be of value if connected to other vegetation
- Be larger than 2 hectares
- If a corridor, be 40 metres or wider
- Be signed up to a 10-year management agreement through the Goulburn Broken CMA and agree to implement works.

To express your interest (for when, and if funding becomes available), please complete the form on the reverse of this flyer and return to [reception@gbcma.vic.gov.au](mailto:reception@gbcma.vic.gov.au)

Landholders will be contacted once funding becomes available (please note this may take time).



*The Goulburn Broken Catchment*

# Expression of interest: Potential funding

To enhance & protect biodiversity on private land



**GOULBURN  
BROKEN**  
CATCHMENT  
MANAGEMENT  
AUTHORITY

Name

Postal Address

Telephone

Email

Date of EOI

Address or approximate location of site(s) you wish to protect (e.g. 5km down Smiths Rd, Smithsville)

## Tell us about the site you want to protect ...

Approximately how big is the site? (ha / acres or length / width if it is a linear site e.g. along a river)

How is the site currently used and how do you intend to use into the future? (e.g. cropping, grazing, dairy)

What type of site is it and what environmental values do you believe it has? (e.g. wetland, waterway, woodland, grassland)

Any other comments you wish to make regarding the site or your EOI?

**Privacy Statement:** The Goulburn Broken Catchment Management Authority respects the privacy of your personal information. We collect and handle personal information responsibly and in conformity with the *Information Privacy Act 2000 (Vic)*. Personal information collected as part of this project will be handled in accordance with that Act. Your personal information will only be used for the purpose of assessing and administering your application and any future applications. You may seek to access your personal information by contacting Goulburn Broken Catchment Management Authority. If you have any questions about our privacy policy, please visit our website [www.gbcma.vic.gov.au](http://www.gbcma.vic.gov.au), or call us on (03) 5822 7700.

Please complete this EOI and send to Goulburn Broken CMA, PO Box 1752, Shepparton VIC 3630 or email [reception@gbcma.vic.gov.au](mailto:reception@gbcma.vic.gov.au)