

# Linking Landscapes and Communities

## Enhancing Grey Box Grassy Woodlands



**GOULBURN  
BROKEN**  
CATCHMENT  
MANAGEMENT  
AUTHORITY

The Linking Landscapes and Communities project will work with landowners, community groups, Traditional Owners and scientists to improve the condition of the threatened Grey Box Grassy Woodlands and Derived Native Grasslands vegetation communities.

These woodlands are an important part of our natural environment, providing habitat for a diversity of species including nationally threatened swift parrots, regent honeyeaters, turnip copperburr and small purple pea.

The project will deliver actions such as:

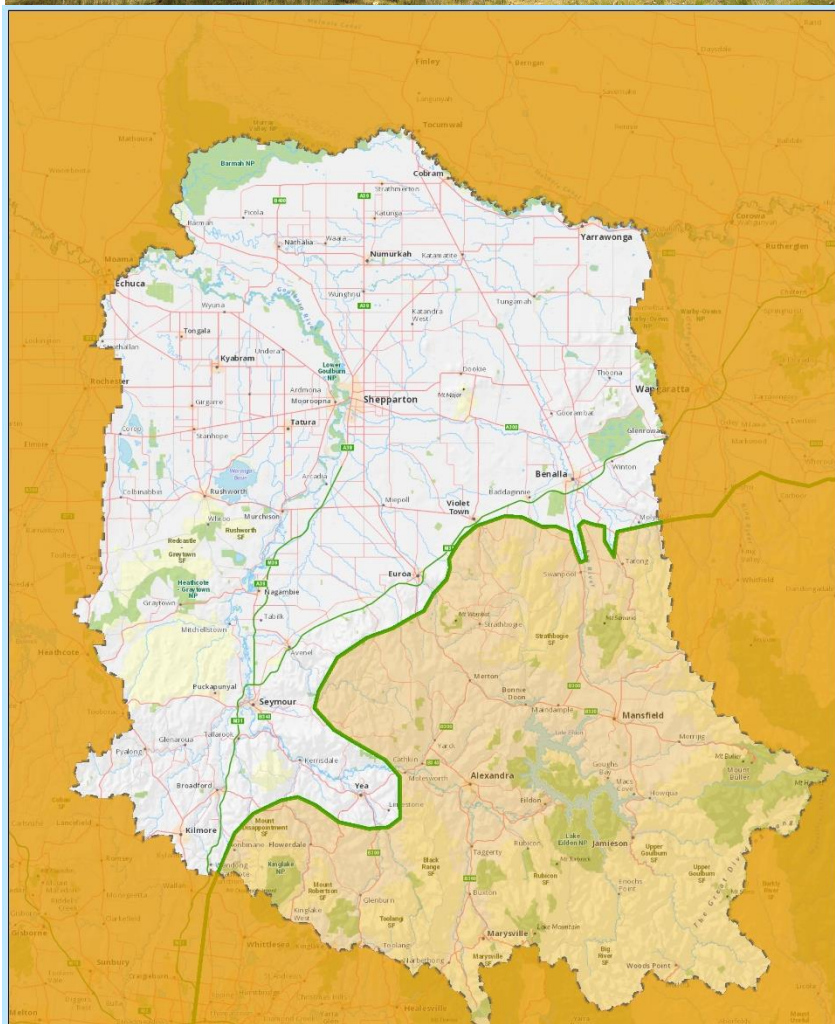
- revegetation;
- pest plant and animal control;
- fencing to manage stock access; and
- community education on the values and management of this important vegetation community and the wildlife it supports.

Improving habitat will increase the chances of many species' ability to adapt to changes in climate.

This project builds on previous woodlands projects funded by the Australian Government, which resulted in more than 50 farmers revegetating and enhancing over 1000 hectares of woodlands through changed management. This is important work because the greatest losses of biodiversity in Australia has occurred on agricultural land. Farmers cannot be expected to reverse these declines alone, and it is recognised that incentive schemes are required to pay landowners to do this important work.

Experience has shown that once on ground works are completed, farmers, without exception, see the benefits of enhancing nature on their properties. They can see how it improves their lifestyle, increases productivity and the value of their farms, improves stock health and fertility, and provides a more sustainable landscape for all of us.

This project will provide incentives to eligible landholders. If you are interested in being involved in this project, please complete the EOI form on the back of this flyer or contact **Jenny Wilson** on 5822 7700 or [jennyw@gbcm.vic.gov.au](mailto:jennyw@gbcm.vic.gov.au)



Project area = north of the green line



# Linking Landscapes and Communities

## Expression of Interest



**GOULBURN  
BROKEN**  
CATCHMENT  
MANAGEMENT  
AUTHORITY

Name

Postal Address

Telephone

Email

**Address or approximate location of site(s) you wish to protect** (eg. 5km down Smiths Rd, Smithsville)

**Tell us about the site you want to protect ...**

**Approximately how big is the site?** (ha / acres or length / width if it is a linear site eg. along a river)

**How is the site currently used?** (eg. cropping, grazing, dairy)

**What type of site is it?** (eg. wetland, waterway, woodland, grassland)

**What do you want to achieve at the site?**

**Privacy Statement:** The Goulburn Broken Catchment Management Authority respects the privacy of your personal information. We collect and handle personal information responsibly and in conformity with the *Information Privacy Act 2000 (Vic)*. Personal information collected as part of this project will be handled in accordance with that Act. Your personal information will only be used for the purpose of assessing and administering your application and any future applications. You may seek to access your personal information by contacting Goulburn Broken Catchment Management Authority. If you have any questions about our privacy policy, please visit our website [www.gbcma.vic.gov.au](http://www.gbcma.vic.gov.au), or call us on (03) 5822 7700.

Please complete this EOI and send to Jenny Wilson, Goulburn Broken CMA, PO Box 1752, Shepparton VIC 3630 or email [jennyw@gbcma.vic.gov.au](mailto:jennyw@gbcma.vic.gov.au) by March 31, 2019.