

# Wildflowers

of the Foothills and Mountains  
of Northeastern Victoria



## Orchids & Ferns



**Common Bird-orchid**  
*Chiloglottis valida*  
IH



**Golden Moths**  
*Diuris chryseopsis*  
MT



**Nodding Greenhood**  
*Pterostylis nutans*  
MT



**Rosy Hyacinth-orchid**  
*Dipodium roseum*  
MT



**Austral Ladies' Tresses ~**  
*Spiranthes australis*  
EC



**Slender Sun-orchid**  
*Thelymitra pauciflora*  
BC



**Common Maidenhair**  
*Adiantum aethiopicum*  
RZ



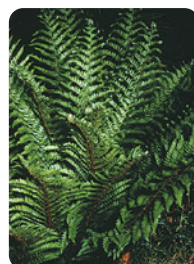
**Necklace Fern**  
*Asplenium flabellifolium*  
PG



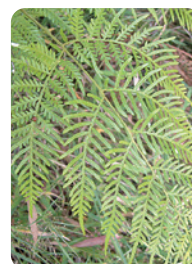
**Green Rock-fern**  
*Cheilanthes austrotenuifolia*  
IH



**Fishbone Water-fern**  
*Blechnum nudum*  
MT



**Mother Shield-fern**  
*Polystichum proliferum*  
IM

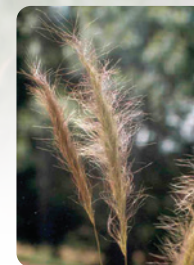


**Austral Bracken ~**  
*Pteridium esculentum*  
MT

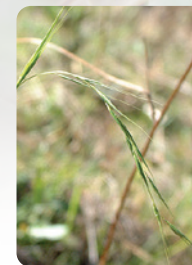
## Grasses



**Red-leg Grass ~**  
*Bothriochloa macra*  
RZ



**Long-hair Plume-grass**  
*Dichelachne crinita*  
JH



**Weeping Grass ~**  
*Microlaena stipoides*  
MT



**Bristly Wallaby-grass**  
*Austrodanthonia setacea*  
LR



Flower CSU  
20 sp of Wallaby-grass



**Common Hedgehog-grass ~**  
*Echinopogon ovatus*  
PG



**Dense Spear-grass**  
*Austrostipa densiflora*  
IH



Flower MT  
15 sp of Spear-grass



**Kangaroo Grass ~**  
*Themeda triandra*  
IM



**Common Tussock-grass**  
*Poa labillardierei*  
MT



Flower CSU  
20 native, 6 introduced sp



**Red-anthered Wallaby-grass ~**  
*Joycea pallida*  
MT



## Lilies



**Pale Vanilla-lily**  
*Arthropodium milleflorum*  
■ ■ ■ MT



**Chocolate Lily**  
*Arthropodium strictum*  
■ ■ ■ MT



**Small Vanilla-lily**  
*Arthropodium minus*  
■ ■ ■ MT



**Milkmaids ~**  
*Burchardia umbellata*  
■ ■ ■ PM



**Bulbine Lily**  
*Bulbine bulbosa*  
■ ■ ■ MT



**Yellow Rush-lily ~**  
*Tricoryne elatior*  
■ ■ ■ MT



**Common Fringe-lily**  
*Thysanotus tuberosus*  
■ ■ ■ MT



**Twining Fringe-lily**  
*Thysanotus patersonii*  
■ ■ ■ RZ



**Common Early Nancy ~**  
*Wurmbea dioica* ssp. *dioica*  
■ ■ ■ MT



**Black-anther Flax-lily**  
*Dianella admixta*  
■ ■ ■ MT



**Tasman Flax-lily**  
*Dianella tasmanica*  
■ ■ ■ IM



**Nodding Blue-lily ~**  
*Stypandra glauca*  
■ ■ ■ MT

## Lilies



**Wattle Mat-rush**  
*Lomandra filiformis* ssp. *coriacea*  
■ ■ ■ PG



**Spiny-headed Mat-rush**  
*Lomandra longifolia* ssp. *longifolia*  
■ ■ ■ ■ ■ MT



**Many-flowered Mat-rush**  
*Lomandra multiflora* ssp. *multiflora*  
■ ■ ■ ■ ■ IH

## Sedges



**Common Woodrush**  
*Luzula meridionalis*  
■ ■ ■ ■ ■ IH



**Common Bog-sedge**  
*Schoenus apogon*  
■ ■ ■ ■ ■ TD



**Tassel Sedge**  
*Carex fascicularis*  
■ ■ ■ ■ ■ PG



**Variable Sword-sedge**  
*Lepidosperma laterale*  
■ ■ ■ ■ ■ LR



**Leafy Flat-sedge**  
*Cyperus lucidus*  
■ ■ ■ ■ ■ MR-K



**Pale Rush**  
*Juncus pallidus*  
■ ■ ■ ■ ■ TD



**Tall Sedge**  
*Carex appressa*  
■ ■ ■ ■ ■ MT



**Thatch Saw-sedge**  
*Gahnia radula*  
■ ■ ■ ■ ■ MR-K



**Red-fruit Saw-sedge**  
*Gahnia sieberiana*  
■ ■ ■ ■ ■ PG

## Herbs



**Variable Plantain**  
*Plantago varia*  
■ ■ ■ ■ ■ PG



**Small Poranthera ~**  
*Poranthera microphylla*  
■ ■ ■ ■ ■ IM



**Small St John's Wort**  
*Hypericum gramineum*  
■ ■ ■ ■ ■ MT



**Blue Pincushion ~**  
*Brunonia australis*  
■ ■ ■ ■ ■ MT



**Austral Bear's-ear ~**  
*Cymbonotus preissianus*  
■ ■ ■ ■ ■ MT



**Common Bottle-daisy**  
*Lagenophora stipitata*  
■ ■ ■ ■ ■ IH



**Variable Billy-buttons**  
*Craspedia variabilis*  
■ ■ ■ ■ ■ CF



**Button Everlasting**  
*Helichrysum scorpioides*  
■ ■ ■ ■ ■ TD



**Scaly Buttons**  
*Leptorhynchus squamatus*  
■ ■ ■ ■ ■ MT



**Clustered Everlasting**  
*Chrysocephalum semipapposum*  
■ ■ ■ ■ ■ MT



**Australian Buttercup**  
*Ranunculus lappaceus*  
■ ■ ■ ■ ■ MT



**Creamy Candles**  
*Stackhousia monogyna*  
■ ■ ■ ■ ■ MT



## Herbs



**Southern Tick-trefoil**  
*Desmodium gunnii*  
PG



**Kidney-weed ~**  
*Dichondra repens*  
MT



**Prickly Woodruff**  
*Asperula scoparia*  
IM



**Many-stemmed Bluebell**  
*Wahlenbergia multicaulis*  
KW



**Tall Bluebell**  
*Wahlenbergia stricta*  
PM



**Rock Isotome**  
*Isotoma axillaris*  
CF



**Shady Wood-sorrel**  
*Oxalis exilis*  
PC



**Showy Violet**  
*Viola betonicifolia*  
MT



**Ivy-leaf Violet**  
*Viola hederacea*  
MT



**Slender Dock**  
*Rumex brownii*  
IH



**Common Raspwort**  
*Gonocarpus tetragynus*  
MT



**Hill Raspwort**  
*Gonocarpus elatus*  
TD



**Stinking Pennywort**  
*Hydrocotyle laxiflora*  
RZ



**Hairy Speedwell**  
*Veronica calycina*  
PG



**Austral Bugle ~**  
*Ajuga australis*  
MT



**Variable Willow-herb**  
*Epilobium billardierianum* ssp. *cinereum*  
IM



**Tall Sundew**  
*Drosera peltata* ssp. *auriculata*  
MT



**Grass Triggerplant**  
*Stylidium armeria*  
EC



**Variable Crane's-bill**  
*Geranium* sp. 2  
MT



**Bidgee-widgee**  
*Acaena novae-zelandiae*  
IM



**Prickly Starwort**  
*Stellaria pungens*  
IH



**White Elderberry ~**  
*Sambucus gaudichaudiana*  
MR-K



**Rough Fireweed**  
*Senecio hispidulus*  
MT



**Scrub Nettle**  
*Urtica incisa*  
TD

## Herbs

## Sub-Shrubs & Twiners



**Honey-pots**  
*Acrotriche serrulata*  
MT



**Creeping Bossiaea**  
*Bossiaea prostrata*  
IM



**Blue Finger-flower ~**  
*Cheiranthra cyanea* var. *cyanea*  
MT



**Common Hovea**  
*Hovea heterophylla*  
MT



**Dwarf Boronia**  
*Boronia nana* var. *hyssopifolia*  
MT



**Common Rice-flower**  
*Pimelea humilis*  
MT



**Running Postman ~**  
*Kennedia prostrata*  
CF



**Love Creeper ~**  
*Comesperma volubile*  
MR-K



**Common Apple-berry**  
*Billardiera mutabilis*  
IM



**Twining Glycine**  
*Glycine clandestina*  
MT



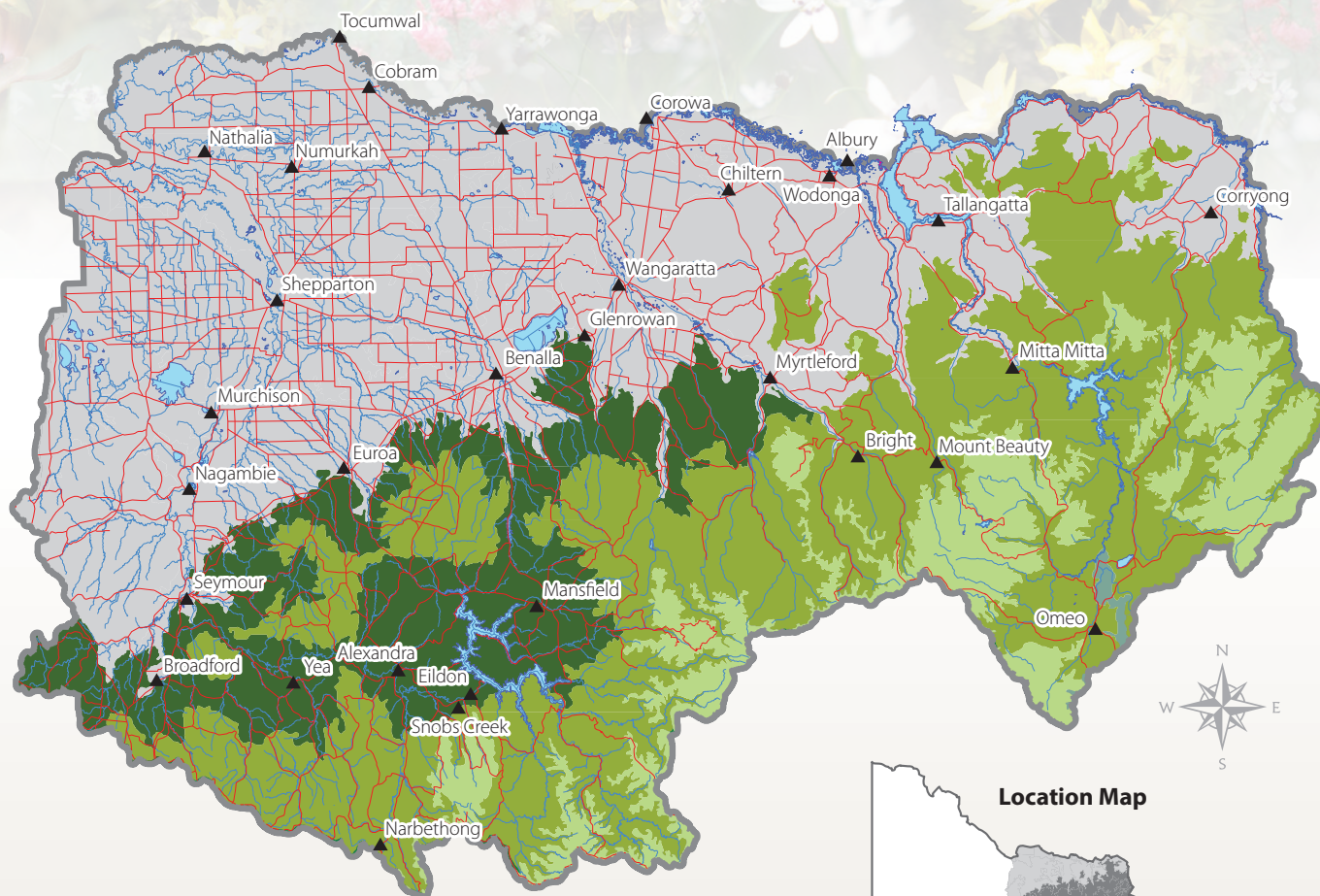
**Purple Coral-pea ~**  
*Hardenbergia violacea*  
MT



**Mountain Clematis**  
*Clematis aristata*  
IM



# Bioregions of the Foothills and Mountains, Northeastern Victoria



## WEBSITES

**Biodiversity Information Resources and Data (BIRD)** [www.bird.net.au](http://www.bird.net.au)  
**CSU Herbarium** [www.csu.edu.au/herbarium](http://www.csu.edu.au/herbarium)  
**Environment Australia** [www.ea.gov.au](http://www.ea.gov.au)  
**FloraOnline** <http://plantnet.rbgsyd.nsw.gov.au/floraonline.htm>  
**Greening Australia** [www.greeningaustralia.org.au](http://www.greeningaustralia.org.au)  
**Landcare Gateway** [www.landcarevic.net.au](http://www.landcarevic.net.au)  
**Land for Wildlife** [www.dse.vic.gov.au/notes/](http://www.dse.vic.gov.au/notes/)  
**National Herbarium of Victoria**  
[www.rbv.vic.gov.au/research\\_and\\_conservation/herbarium](http://www.rbv.vic.gov.au/research_and_conservation/herbarium)  
**Nature Web** [www.natureweb.org.au](http://www.natureweb.org.au)  
**North East SWIFFT** [www.swiff.bird.net.au](http://www.swiff.bird.net.au)  
**VicVeg Online** [www.vicveg.net.au](http://www.vicveg.net.au)

## PHOTOGRAPHY:

All photographs shown here (apart from Paul Gullan/Viridians Images) have been donated. The initials of the photographer/organisation is listed below each image. *BC* Brad Costin, *CF* Chris Findlay, *CSU* Charles Sturt University Herbarium, *EC* Eileen Collins, *IH* Ian Higgins, *IM* Ian McCann courtesy of The State of Victoria, Department of Sustainability and Environment collection, *JH* Jo Heard, *KW* Karen Wales, *LR* Lyndall Rowley, *MR-K* Mike Robinson-Koss, *MT* Mary Titcumb, *PC* Dr Peter Curtis, *PG* Paul Gullan/Viridians Images, *PM* Paul McKenna, *RZ* Reto Zollinger, *TD* Tim D'Ombrian.

## Legend

- Central Victorian Uplands
- Highlands - Northern Fall
- Victorian Alps
- East Gippsland Uplands
- Streambanks and Wetlands
- See "Wildflowers of the Plains and Low Hills of Northeastern Victoria"

## Wildflowers

### *of the Foothills and Mountains of Northeastern Victoria*

This brochure shows a selection of wildflowers from the foothills and mountains in the Goulburn-Broken and Northeast catchments (see map at back). The photos may assist in identifying some of the more common groundlayer species. The bioregion colour codes and the distribution map will help you with your identification (bioregion descriptions can be found at the DSE website listed below). The symbol ~ indicates that no other species in that genus are likely to be encountered. Photos show plants in flower, however some colours may vary depending on location.

This brochure provides a good starting point, but many species can look very similar. See the references below for accurate species identification.

Also refer to the guide for the Wildflowers of the Plains and Low Hills in Northeastern Victoria – some of those species are also found here. Aquatic, alpine and annual plants are generally excluded from this guide.

## HOW CAN I HELP?

To help to conserve places where wildflowers persist, you can:

- Join a local Field Naturalists, Environment, Friends of, or Landcare group.
- Ask your Shire to include any wildflower areas you know of in their roadside conservation plan.

If you own or manage land:

- Avoid any kind of earthworks in areas with wildflowers and native grasses.
- Avoid the application of herbicides and fertilizers.
- Talk to DSE Biodiversity Officers about ecological burns and kangaroo grazing management.
- Talk to CMA and DPI officers about fencing and grazing management.
- Control rabbits.
- Identify and remove perennial weeds.
- Talk to Trust for Nature Victoria about Conservation Covenants.

## For more information:

**Goulburn-Broken Catchment Management Authority**

(03) 5820 1100 [www.gbcm.vic.gov.au](http://www.gbcm.vic.gov.au)

**North East Catchment Management Authority**

(02) 6043 7600 [www.necma.vic.gov.au](http://www.necma.vic.gov.au)

**Departments of Sustainability and Environment, and Primary Industries**

Benalla (03) 5761 1611 or Wodonga (02) 6043 7900

[www.dse.vic.gov.au](http://www.dse.vic.gov.au) [www.dpi.vic.gov.au](http://www.dpi.vic.gov.au)

## OTHER REFERENCES

Corrick, M. & Fuhrer, B. 2001. *Wildflowers of Victoria*

Costermans, L., 1992. *Native Trees and Shrubs of South-eastern Australia*

Cunningham, G., Mulham, W., Milthorpe, P. & Leigh, J. 1981.

*Plants of Western New South Wales*

Lunt, I., Barlow, T. & Ross, J. 1998. *Plains Wandering*

Viridians. 2007. *Wild Plants of Victoria* (CD)

Walsh, N.G. & Entwistle, T.J. 1999. *Flora of Victoria*

## ACKNOWLEDGMENTS:

Thanks to those who provided comments on this guide. Thanks also to Leigh Catchment Group for allowing the use of their brochure format. Map produced by Phi-R Pty Ltd

**Compiled by Mary Titcumb** for Department of Sustainability and Environment, and Sally Mann.

**Published by GBCMA** © Copyright of content owned by GBCMA, 2009.

**Citation:** Titcumb, M. (DSE) & Mann, S. (2009) *Wildflowers of the Foothills and Mountains of Northeastern Victoria*, Goulburn Broken Catchment Management Authority, Shepparton.

**ISBN:** 978-1-920742-18-8

**Disclaimer:** This information may be of assistance to you but the State of Victoria and its employees do not guarantee that the information is without flaw of any kind or is wholly appropriate to your purposes and therefore disclaims liability for any errors, loss or other consequences which may arise from you relying on this information.

**Cover Photo** by Glen Johnson

**Colourfield Design** [www.colourfield.com.au](http://www.colourfield.com.au)

2016