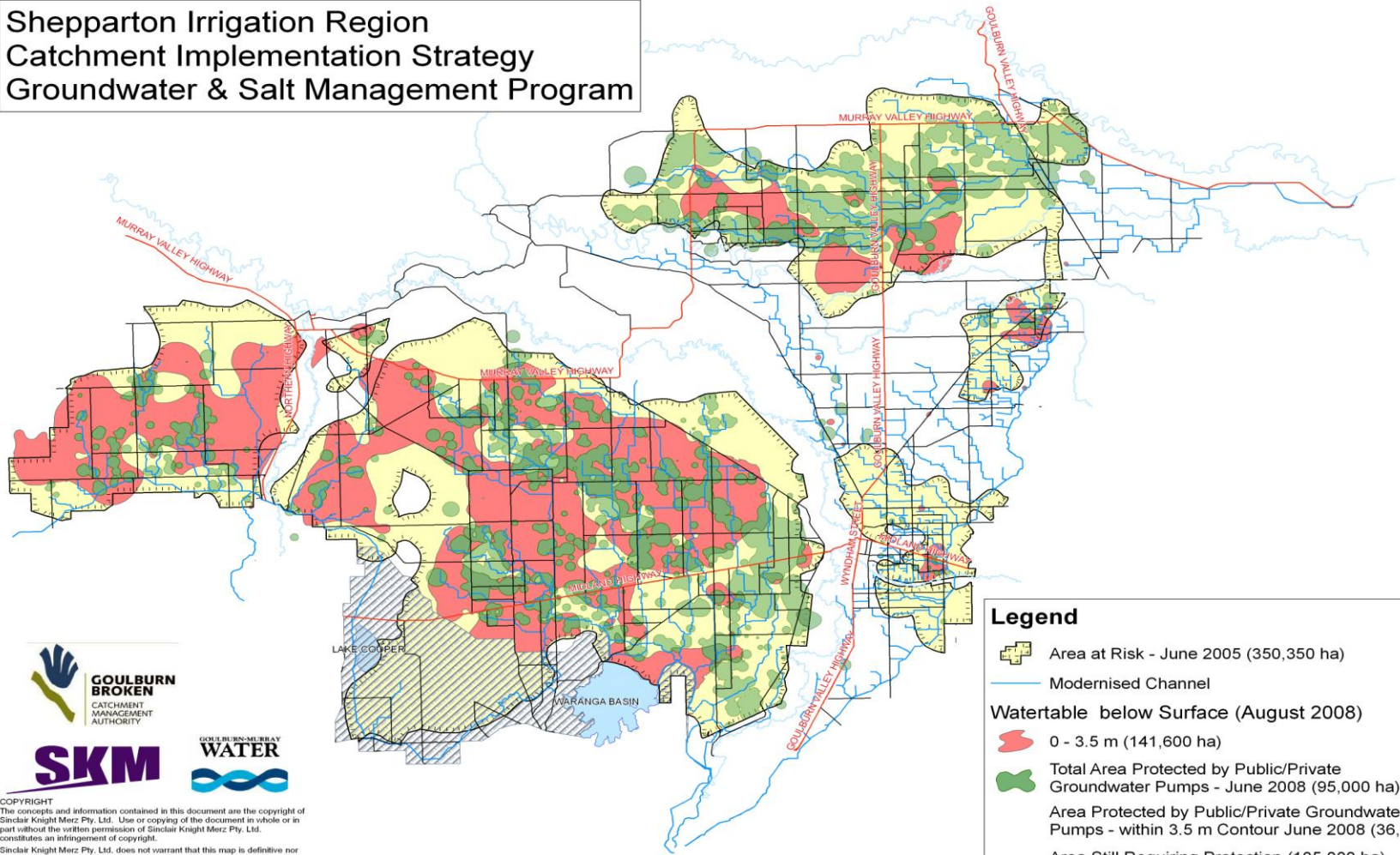


Shepparton Irrigation Region Catchment Implementation Strategy Groundwater & Salt Management Program



Legend

-  Area at Risk - June 2005 (350,350 ha)
-  Modernised Channel
- Water table below Surface (August 2008)**
-  0 - 3.5 m (141,600 ha)
-  Total Area Protected by Public/Private Groundwater Pumps - June 2008 (95,000 ha)
- Area Protected by Public/Private Groundwater Pumps - within 3.5 m Contour June 2008 (36,600 ha)
- Area Still Requiring Protection (105,000 ha)
-  Limited Pumping Potential



SKM



COPYRIGHT
The concepts and information contained in this document are the copyright of Sinclair Knight Merz Pty. Ltd. Use or copying of the document in whole or in part without the written permission of Sinclair Knight Merz Pty. Ltd. constitutes an infringement of copyright.

Sinclair Knight Merz Pty. Ltd. does not warrant that this map is definitive nor free of error and does not accept liability for any loss caused or arising from reliance upon information provided herein.

Prepared: J Camera (21 June 2009)
I:\Map\Projects\WTO2140\Technical\Spatial\ArcMap\ SIR_Watertable_0_to_3_5m.mxd

0 5 10 20 30 40 Km