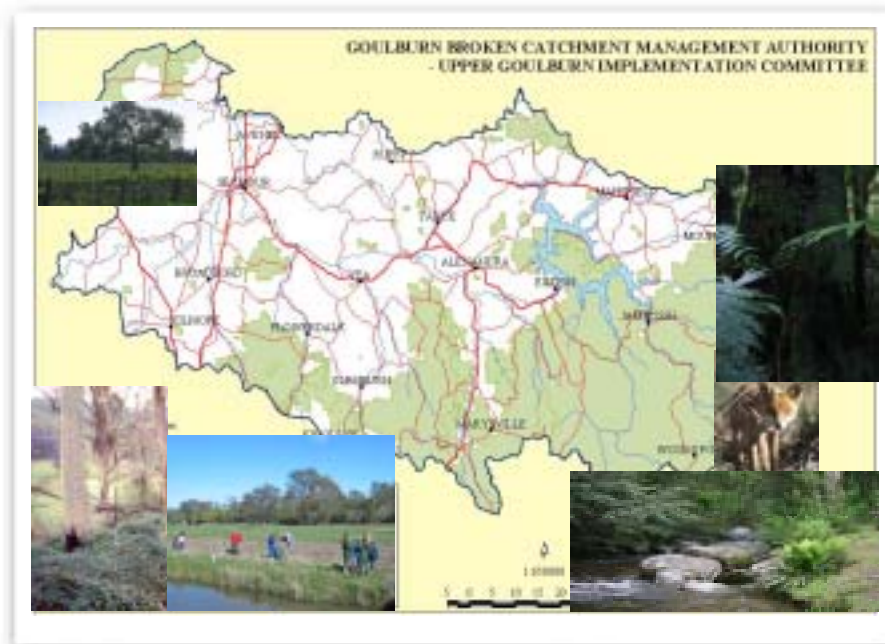


# Key Program Reports 2004



- Catchment Information
- Native Vegetation Management
- Natural Heritage Trust
- Pest Plant & Animal
- Private Forestry
- River Health & Water Quality
- Second Generation Landcare
- Sustainable Dryland Ag & Land Management
- Community Engagement

Upper Goulburn Implementation Committee

3. Chairmans Report
4. Executive Officers Report
6. Biodiversity
7. Pest Plant & Animals
8. Catchment and Agricultural Services
9. Salinity Infrastructure
10. Waterways
12. Upper Goulburn Landcare
13. South West Goulburn Landcare
14. Hughes Creek Landcare
15. Community Engagement
16. Implementation Committee panel

*Pd/AR2003*

The Upper Goulburn Implementation Committee recognises the valuable input from our community and funding partners and thanks the following investors for their support.

The Australian Federal Government—The Natural Heritage Trust—The National Action Plan— The National Landcare Program—Victorian State Government—Second Generation Landcare— Recreational Fishing Licence Program.



## Chairmans Report

Chris Doyle

Despite the continued dry conditions the Upper Goulburn Implementation Committee has overseen another successful annual community based natural resource program in the 10,500sq km upper Goulburn catchment.

The 2003/4 year was highlighted by increasing the immediate relevance and effectiveness of the Regional Catchment Strategy (RCS) to local communities and improving on ground implementation processes.

Following its annual internal review and feedback obtained through the highly valued annual round table discussions with Landcare Groups and its community, the UGIC is now managing delivery of its programs and community engagement processes through 3 sub-catchment based programs – each of which closely align with its 3 municipal districts. The benefits of this initiative have become immediately obvious through greater participation and interest in the GBCMA, its Regional Catchment Strategy and integrated program delivery. Recent examples of this have been the informative Weeds Forums which have informed local communities of their obligations, the strategic approach being taken to weed management, identified the DPI resources (enforcement and extension staff) and incentives available through their local Landcare Groups to tackle the issue.

The continued employment of Landcare Coordinators to support the 3 Landcare Collectives has been another important achievement enabling Landcare to grow and deliver important on ground works. These Coordinators play an important role in engaging our local communities and working closely with CMA, DPI and GMW staff to develop and implement effective projects.

Regrettably, delivery on a promise of a more efficient, timely and effective Investment Planning process has yet to eventuate. Enabling legislation in 1997 charged Implementation Committees with the responsibility to engage the community to develop local strategies and implement on ground works programs that achieve the RCS goals. Considerable thought, time and effort have been put in by the UGIC and its CMA support staff to ensure the most cost effective means of delivering, monitoring, evaluating and reporting on the numerous integrated outputs and outcomes. These have been carefully developed through practical application so they are meaningful and useful to management, the community we serve, Implementation Committees, the CMA Board and, we believe, our Funding bodies - State and Federal Governments.

The important role and relevance of community based Implementation Committees in engaging their community to care for our river has been reinforced in the recently released Victorian Government White Paper – ‘Securing our Water Future Together’.

The numerous outputs from the UGIC program are detailed in the following reports from the various Key Program Leaders and Landcare Coordinators. I take this opportunity to congratulate and thank them and their staff for their achievements and commitment. I also commend the voluntary commitment and efforts of my fellow UGIC Members to work cooperatively towards making the Upper Goulburn catchment a great place to live, work and play without adversely impacting on downstream communities and environmental values.



In closing I especially wish to thank our Executive Officer, Russell Wealands who has advised that he will be leaving the CMA late this year after working in the water and natural resource industry for some 34 years – the past 9 years based at Yea as Executive Officer for the Upper Goulburn Waterways Authority and the GBCMA.

Russell's dedication and commitment to the CMA's goals and objectives - in particular his passion for the Upper Goulburn - in my view, is unsurpassed. On behalf of the UGIC I would like to take this opportunity to wish Russell and his wife Jan all the best for the future.

Chairman  
Upper Goulburn Implementation Committee

# Executive Officers Report

## Russell Wealands



The UGIC has successfully overseen the implementation of another \$4.3m program of natural resource management in the 10,500 sq km upper Goulburn river catchment during 2003/4. Many planned on ground activities exceeded the initial targets contained in the approved Regional Management Plan. This indicates a strong commitment, professionalism, and pride by the staff and community in the upper catchment, to work together to achieve the Regional Catchment Strategy goals.

Significant achievements through the year have included:

- €# successfully rejuvenating the whole farm planning process across the dryland providing for sustainable production and enhanced protection of environmental assets,
- €# expanding and refining the findings from the South West Goulburn study (completed in 2002/3) from the two sub-catchment study areas to the entire 3000 sq km South west Goulburn catchment.



*Upper Goulburn Catchment vista.*

- €# managing program delivery on a sub-catchment basis to make programs more relevant and accountable to the municipalities and local communities we serve.
- €# initiating Biodiversity Action Planning in the upper Goulburn to identify and guide future works that will protect and enhance our rare, threatened and endangered species.
- €# acquisition of aerial and satellite digital imagery (part) of the upper catchment as an important planning and investigation tool for use by CMA and DPI staff as well as community groups such as Landcare.
- €#

- €# accelerated uptake in the Farm Exploratory Drilling program as an alternative to managing ground water for salinity outcomes.
- €# Organising and conducting a highly successful EnviroExpo to publicise and demonstrate data sets and tools available to plan and implement natural resource programs.
- €# Details of these achievements are contained in other sections of this report.



*Visitors and exhibitors mingle at EnviroExpo 2003*



*EnviroExpo 2003 sets the tone for future natural resource management exhibitions. Thirty exhibitors from a variety of Government and semi Government Agencies attended the one day exhibition, which highlighted the numerous sources of information for natural resource management planning.*

The Victorian Government's recent release of the White Paper – 'Securing our Water Future Together' is an important milestone that identifies and strengthens the future role for the GBCMA and the UGIC. Water is unquestionably our greatest resource and, in the Goulburn Broken catchment, the upper Goulburn is unquestionably the major source of water – and it is water of generally high quality.

The finalisation of the Regional River Health Strategy and the study of the South West Goulburn salinity processes and the extent of remedial measures necessary to reduce salt export are important pieces of work completed this year. These provide a valuable guide of actions necessary to address the threats and risks facing our natural resource base from unwise development.

The importance of making regional strategies relevant at a local level and working with local government and communities to address the issues and ensure sustainable development can not be overstated. The UGIC initiative of managing its programs and engaging communities on a sub-catchment basis this past year have been important steps in this process.



*Round table discussions on the Upper Goulburn investment plan.*

I am constantly amazed at the dedication and commitment of the community, UGIC Members and the professionalism of staff (CMA, DPI, DSE and GMW) to make a difference and strive towards (dare I say it?) sustainable triple bottom line outcomes. My special thanks to Chris Doyle and the UGIC Members, staff, partners and community for your support.

It is, and always has been a privilege working with the Authority, the Upper Goulburn Implementation Committee and the community in the upper Goulburn catchment.

I look forward to continuing to participate in caring for our catchment!



*Ben Hardman, Member for Seymour (left) presents the 2003 Hubert Miller perpetual trophy to Brian Hender, and the Landcare Award for Excellence to Jeff Wilmot (second right) assisted by Chris Doyle (UGIC Chair far right).*

A handwritten signature in black ink, which appears to read 'Russell Wealands'.

Russell Wealands  
Executive Officer



# Biodiversity

Kate Brunt

Goulburn Broken Catchment Management Authority



Biodiversity continues to be integrated into a number of land management programs within the upper Goulburn catchment.

## Grants

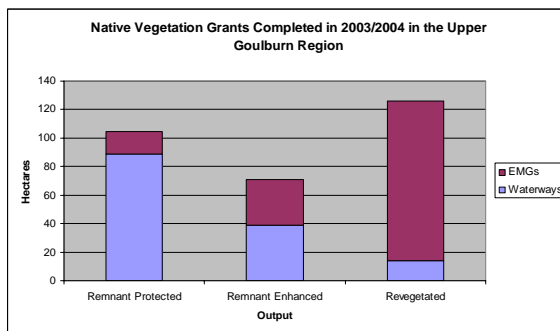
Environmental Management Grants and Waterways Vegetation Grants provide the region with some significant biodiversity gains. The grants have provided landholders with an incentive to either protect remnant vegetation, enhance remnants by planting understorey or revegetating areas to link existing remnant stands.

Over 300ha of land in the upper catchment has been protected through native vegetation grants this year.

## Best Practice Revegetation Project

This project aims to encourage best practice revegetation methods across the Goulburn Broken Catchment. To date literature reviews have been completed on new technological advances, this information has been presented to the Catchments extension staff in the form of presentations and information sheets.

A major focus of the project is to ensure that best practice methods are used in direct seeding. As a result a review of direct seeding in the Goulburn Broken Catchment is currently underway and over 30 direct seeding sites across the catchment have been assessed. This information will be collated and presented in a report and the information will enable extension officers to make informed choices on where to direct seed ensuring that all best practice techniques are used.



## Biodiversity Action Planning

Biodiversity Action Planning is the process that collects information on all of the biodiversity assets within a given area by land tenure and management actions identified. Based on this information biodiversity assets for protection and management can be prioritised at a local landscape scale. Biodiversity Priority mapping has commenced in three BAP Zones in the upper Goulburn region:

The South West Goulburn catchment, Hughes Creek and Lake Eildon.

## Biodiversity Risk Mitigation

Risk assessments have been carried out on a number of Waterways Program activities to assess the potential impact on remnant vegetation, flora and fauna species, river reaches and wetlands. The results of these risk assessments are being used to develop a range of mitigation measures for the waterways team to consider during project planning based on the significance of the biodiversity asset at a particular site. By working together, the Waterway and Biodiversity Programs will ensure waterways works do not have a negative impact on biodiversity assets.

## Native Vegetation Condition Assessment

The four Northern Catchment Management Authorities, (Mallee CMA, Goulburn Broken CMA, North Central CMA and the North East CMA) developed a joint project for data gathering on the condition of native vegetation, at Catchment scale.

The project is in its final stages and on completion will have modelled the condition of all extant native vegetation using the habitat hectare approach. The information will be used to monitor the condition of native vegetation against biodiversity goals and objectives of the Regional Catchment Strategy.

## Communicating Biodiversity

The successful "Wildlife Guide for Landholders in the Plains and Box-Ironbark Regions of the Goulburn Broken Catchment has been succeeded by a new publication for the upper Goulburn catchment titled "Wildlife Guide for Landholders in the Foothills and Upper Regions of the Goulburn Broken Catchment".

The guide outlines significant vegetation types and provides a description of a range of fauna species and their habitat requirements and is a joint project of the CMA, DPI, DSE and Trust for Nature in consultation with Landcare.



## Pest Plant & Animals

Andrew Crocos

Department of Primary Industry

The "Pest Animals– other " program implements strategies for the management of wild dogs and foxes across the Goulburn Broken Catchment.

The program works with the North East Wild Dog Management Group to develop and implement strategies and works programs to reduce the impact of wild dogs on agriculture and the environment. The (draft) North East Wild Dog Action Plan which covers wild dog areas of the Goulburn Broken and North East Catchments was released for public comment in late 2003.

The program engaged two wild dog control field staff working from Alexandra and Mansfield this year for a coordinated approach to trapping, and snaring programs on public land.

Catchment Management Officers (CMO's) worked with Landcare Groups to coordinate control programs including development of the Mansfield Local Area Control Plan (LACP). The process to develop a draft LACP has involved members of Mansfield Wild Dog Group and local public land managers.

The Enhanced Fox Management Program (EFMP) - Phase 2 follows the Fox Tail Bounty trial and encourages more widespread, coordinated participation of landholders in integrated fox control campaigns emphasising the use of poisoned fox baits as the most cost effective long-term control method. The EFMP project has seven flagship sites across Victoria associated with prime sheep production areas and one of these is located in Euroa, with high volume sales across the upper Goulburn region.

### Weeds

Community Weed Action Forums, hosted and arranged by the UGIC, were held in the Upper Goulburn Catchment this year to increase community understanding of the Regional Weed Action Plan and the priority weed mapping system.



*Pattersons Curse containment.*

The dryland extension component was largely delivered by 13 Community Landcare Facilitator's with funding from Weeds of National Significance, Gorse program, Box/Ironbark program and Second-Generation Landcare. A total of 18 dryland project areas

were covered including Bonnie Doon, Mansfield, Broadford, Seymour, Nagambie, Alexandra, and Ruffy in the upper Goulburn region.

3000 landholders were provided with advice and assisted to develop individual work plans to control targeted species.

Compliance measures were taken against landholders who had not satisfactorily undertaken weed control works resulting in 54 land management notices and 1 non-compliance Direction, which culminated in 6 successful prosecutions, 2 official warnings and 2 pending court cases.

Other projects undertaken during the year included:

- €# inspections of all retail plant outlets in the region for prohibited species
- €# industry hygiene training sessions conducted for contractors
- €# development of priority areas for delivery of Paterson's curse extension and enforcement programs
- €# revision of the Goulburn Broken Region Weed Identification Booklet

### Rabbits

22,600 hectares were baited in high priority rabbit areas. This work has also been complemented with CMA funding to Landcare Groups for harbour reduction and ripping programs.

The Good Neighbour Program protects, enhances and restores priority vegetation and native fauna through integrated control programs that target

the public/private land interface. Its' aim is to complement weed control and other natural resource management projects on adjoining private land.

Community expressions of concern are addressed on an 'as needs' basis.

An area South east of Alexandra has been targeted for a three year blackberry control program, beginning in the past year. Approximately 100 landholders and 14,000 ha will benefit from this integrated campaign which identifies and maps priority weeds and extension staff are working with landholders to develop a weed management workplan. There are numerous parcels of public land containing blackberry in this area and various agencies contributed to control works using Good Neighbour funds, including Forest Management, Parks Victoria, Land Victoria and Dept. of Primary Industries.



*Ripping rabbit burrows*



# Catchment and Agricultural Services

Rick Felton

DPI Sustainable Agriculture & Land Management Program Leader

Following the recent break in seasonal conditions, extension staff are currently focused on encouraging and coordinating the implementation of approved Environmental Management Incentives (previously known as Environmental Management Grants)

It has been agreed to undertake a review of the application of Environmental Management Incentives (EMI) in the dryland following the recent re-allocation of funds in the Mid and upper Goulburn catchments. This review will look at the EMI products and processes for on-ground delivery of works, with a particular focus in the UGIC area. We recognise that the changing demographics across much of this area may require different approaches to service delivery.

Uptake and expenditure of EMI funds has been relatively low in the UGIC area. Preliminary information for the upper Goulburn indicates a total expenditure for EMI for the for the past year of \$254,253, resulting in 22 ha of remnant native vegetation protection, 137 ha of revegetation and 54 ha of lucerne pasture.

The use of incentives for fencing and protection of individual trees has been raised as an issue. This has strong support

in some parts of the community however this approach to paddock tree protection is unlikely to be cost effective compared with other resource protection measures. Other ways to enhance the viability of single paddock trees will need to be investigated to service this need.



*Paddock trees need to be protected*



*Fenced laneway and riparian vegetation to protect remnants*

Interest in Whole Farm Planning in the Dryland remains strong. In the year to March 30th, 84 Whole Farm Plans were developed in the upper Goulburn area. Options for further adapting the course to suit local situations are being explored, eg. development of modules aimed at part-time and hobby farmers in the South West Goulburn area around Broadford/Kilmore/Yea.

A review of the issues associated with raised bed cropping is currently being undertaken across the Dryland, particularly the approach to be taken through Whole Farm Planning programs,

Catchment modelling for the South West Goulburn project by Sinclair Knight Merz is proceeding well. A review of progress confirmed that the process used for identifying the most suitable locations for revegetation was appropriate. New data confirms that location of trees within the landscape has a significant impact on changes to salt loads and water yields, however this information is challenged by the area of revegetation required to get large changes in salt load responses.

The Catchment and Agricultural Services staff are pleased to have provided input to the significant progress of Goulburn Murray Waters' Goulburn Broken Dryland Engineering Options Strategy..





# Salinity Infrastructure

Sudath Herath  
Goulburn-Murray Water

In the past, stream salinity monitoring studies have been used to identify the South West Goulburn region as a major salt contributor to the Goulburn River. This conclusion is based on a monitoring regime that has been in place since 1990.

Whiteheads Creek near Seymour has recorded the highest areal salt contribution to the Goulburn River of approximately 400 kg per hectare per annum. This is close to 5 times the salt generation rates of other lower Goulburn sub-catchments.

To monitor this trend an annual program of stream salinity observations is conducted at 7 sites across the upper Goulburn catchment.



*Successful promotion of the Groundwater Pumping scheme was achieved through advertising and a direct mail campaign to landholders in the target priority areas.*

The CMA funds a Grants program, managed by Goulburn Murray Water, called the 'Dryland Groundwater Pumping Incentive Scheme' to offset the impact of rising groundwater and associated salinity levels. Incentives to undertake groundwater investigations and establish pumping for economically viable production in priority salinity areas have been offered for some time now, but the take up in the upper catchment has been low.

Such incentives aim to improve economic returns for the landholder and as an option for landholders to control salt exports from private land. offers funding to locate suitable groundwater for irrigation development while providing salinity benefits.

In the past year more than \$22,000 was spent on completion of 3 groundwater investigations and 1 capital grant to equip an irrigation bore at a vineyard in the Kilmore area.



*Salinity priority maps were produced to identify target areas for the Goulburn Broken Groundwater Pumping Incentive Scheme.*

Several investigations have been started on other properties as a result of a promotional campaign to improve awareness of the scheme, and a supporting brochure has been prepared to assist landholders understand the impacts of flow rates, salinity and salt loads.

Landholder recognition of the *Groundwater Pumping Incentive Scheme* has improved over the past year in comparison to the previous twelve months when there were no investigations or groundwater pump installations in the upper Goulburn catchment.

To further progress this program a promotional campaign was launched this year in the Southwest Goulburn area to attract more landholders to the *Groundwater Pumping Incentive Scheme*. With an advertising campaign and publication of a new brochure to highlight the benefits, 10 new landholders have applied to be included in the scheme.

This represents a huge improvement in uptake by landholders and will result in a significant improvement for the salinity program.



## Waterways and Riverine Health

Tom O'Dwyer

Upper Goulburn Waterways Engineer

The CMAs Waterway Team under the leadership of Tom O'Dwyer has delivered a \$1.7 million River Health deliver highly focussed 'on ground' works program in the Upper Goulburn over the past year

While continuing the focus on the traditional river stabilisation works to reduce the amount of sediments and nutrients entering our waterways the past year has seen an increase in the control of exotic vegetation along our waterways and riparian management program of control stock access to waterways. This enables the protection and enhancement of indigenous native riparian vegetation together.

Most stabilisation sites have also had stock access control works (fencing and alternative stock watering) and revegetation works completed through the Waterway Grants scheme. This popular scheme assists and engages landowners in protecting the works from damage by stock, delivering long term water quality and aquatic habitat benefits, while ensuring that work sites are protected.

The Authority has programs to meet part cost of off-stream stock dams and/or troughs. This assists landowners provide alternative water supplies for stock – often leading to productivity benefits as well as water quality, stream health and environmental benefits.

Several important investigations and studies have also been completed in the past year. These will inform future river health programs on the King Parrot Creek and the Sunday Creek. A regional River Health Strategy and Regional Willow Strategy have also been completed. Other studies related to the implementation of Stream Flow



*Students help with the revegetation program.*

Management Plans on the King Parrot Creek and Yea River were also completed.

The Victorian Government's White Paper has identified and strengthened the CMAs role as the '*caretaker of River Health*' and identified additional funding that will become available in the near future. The Waterways Team in the Upper Goulburn is well placed to convert the additional funding to onground works that will protect high value rivers and help to restore degraded streams in this area.

### Case Study

#### *RFL Project Goulburn River*

The Goulburn River between Eildon and Molesworth is one of the most popular inland recreational fisheries in Victoria. The area is extensively used by recreational anglers and their visitation to the area contributes substantially to the local economy.

There are many natural and man made barriers that impact on access to waterways for recreational purposes and the GBCMA aims to reduce these to improve public access for the benefit of recreation and the health of the rivers and streams.

The past year's programme covered 16 sites from Eildon Pondage down stream to Alexandra. The first stage involved contractors stem injecting willows in March 2004 for a period of 6 weeks over a distance of approximately 10.5km.

Contractors using large excavators cleared the sites in May and the debris was burned to stop regeneration. The largest of the sites have been fenced to exclude stock in preparation for a native revegetation program in the coming year



# Waterways and Riverine Health



*Willows cleared in preparation for native revegetation*

Four of the largest and most easily accessed sites have been fenced to exclude stock from the River banks and allow for the planting of native vegetation which will be commencing at the start of August.

## *MaFRI assists*

Four sites were chosen for a willow clearing program on the Goulburn River between Thornton and Eildon in the past year.

Funded by the Fisheries Revenue Allocation Committee the program aims to create better access to the water frontage reserves.

Control of exotic vegetation, in stream habitat works, with fencing and revegetation form the basis for this MaFRI funded program

In stream habitat works comprised of seeding the river bed with locally provided large red gum logs ,stumps and rocks to the size of 1 to 1.5 metres.

Access points for fishermen have been constructed using approximately 100 tonne of rock per point.

## *Revegetation*

Each year there are waterway grants that stand out above the rest as exceptional. One such site was in Narbethong, where over 5km of fencing was erected along wetlands, Bullock Yard Creek, Fishers Creek and Stoney Creek.

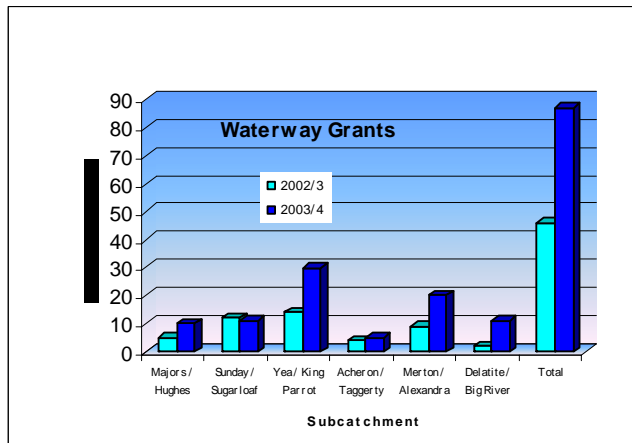
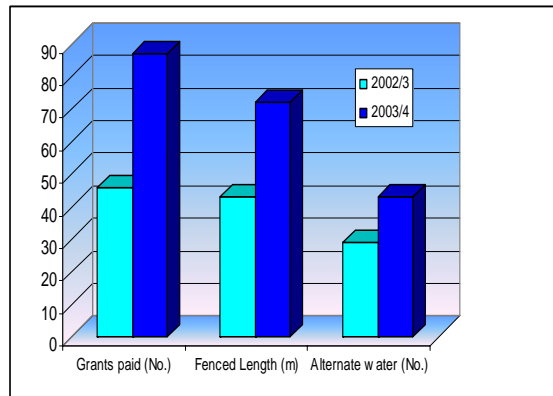
This site meets the Authority's River Health Strategy key objective; 'protection of ecologically healthy rivers', and is on such a large scale. Whilst the property has been predominantly grazed by cattle, it still contained high value stands of remnant vegetation along the waterways and within the wetlands. Most of the three waterways within the property have now been fenced, with 2.4km at a 10m setback, 0.7km at a 20m setback and 2km at a greater than 40m setback.

With such wide setbacks along the waterways, the potential to act as habitat corridors for the local wildlife is very high, as is the ability of the vegetation community to be self-sustaining. Similar grants not only achieve maximum outcomes for the public and the environment, but also for the landowner. In this instance the landowner utilised the opportunity provided by the waterway grant

works, to improve the set up of property fencing, paddock and laneway arrangements, bridges and water points.

A site like this, illustrates how everyone can benefit by improving the management of our waterways for the future.

This year saw a marked increase in the amount of works completed and grant's issued as shown in the following graphs.





## Landcare

### Bertram Lobert and Karen Scott Upper Goulburn Landcare Coordinator

The Upper Goulburn Catchment group was fortunate to gain the full time services of Karen Scott this year after Bridget Clarke took extended leave. Karen had previously worked with the Granite Creeks Landcare Network and comes to the Upper Goulburn with a great deal of experience in Landcare facilitation.

The Upper Goulburn Catchment group (UGCG) supports 10 Landcare Groups offering technical support, project development, funding applications, project management and reporting, and broader information management. Landcare Coordination also engages with the broader community through local newspapers, organised field days, displays at local shows, a quarterly Landcare Calendar of Events and through attendance at many community land management activities.

More than 600 people have been reached through the coordination process this year and promotional campaigns have reached many more.

Activities throughout the year have been varied including field days, meetings and some new and innovative programs and the region has received \$19.5K in funding for various projects.

Three workshops were convened to provide input to the Goulburn Broken Community Support Strategy, which will provide a blueprint for Landcare support into the future. The UGCG also submitted 7 expressions of interest for funding in the 2004-2005 year, and was successful in attracting funds for 4 Envirofund projects for 2003-2004.

The striped legless lizard project conducted two field days, which were convened to increase awareness of this threatened species. In its third, year the project has attracted funding from the Threatened Species Network, making an important contribution to conservation of the lizard, which has been seen in growing numbers throughout the district.

Other successful projects this year include indigenous seed collection, for which there was a collectors workshop that will result in seed collection activities in Spring and Summer, plus a field day in January to focus on non-chemical weed control to reduce reliance on toxic chemicals. This project supports weed and pasture management through soil health and has generated sufficient interest to build a Biological Farming Interest Group in the Yea area. Weed control per hectare was less than previous years possibly due to dry conditions

however a program of landholder education, field days, project tracking and management will continue.

Tree planting was organised in the Yea Wetlands this year to supplement existing remnant vegetation. An Upper Goulburn quarterly Calendar of Events has also been established to keep Landcare and other community groups informed of natural resource matters. Around 600 copies of each issue have been distributed.

Upper Goulburn Landcare Coordinators were also involved with Salt Week activities to assist Waterwatch with an intensive schools salinity education program. In addition a successful Community Salinity Grant application enabled community members to participate in a guided bus tour along the upper and mid reaches of the Goulburn River, where they learned about water quality testing and salinity management techniques.

*Looking at the Goulburn River from the Acheron Cutting during the Salinity Tour.*



A new landowner 'Welcome Pack' has been developed and includes a Sustainable Land Management Directory that has been published with cooperation from local government, Mansfield & Alexandra offices of Departments of Primary Industry & Sustainability and Environment, the Goulburn Broken CMA and Landcare. The DL sized booklet will be distributed to new landowners to provide an information resource and service directory.

Dung Beetles were released in 2003 and 2004 in the Home Creek/Spring Creek area and have attracted a good deal of interest. The project aims to naturalise beneficial species in the upper Goulburn catchment as part of a trend toward natural land management techniques. A new project funded by EnviroFunds will assist with development of professional resources that demonstrate the effect of historic events on the local landscape.

Coordinators also participated in the Upper Goulburn EnviroExpo in 2003, with an exhibit focussed on sustainable land management and natural history, including a 'live' striped legless lizard.

# Landcare

Peter Mitchell  
South West Goulburn Landcare Coordinator

The South West Goulburn (SWG) catchment incorporates five Landcare areas, and has enjoyed a huge increase in activity this year. Landcare Coordination is managed by Peter Mitchell and a Steering Committee. Each Landcare area has unique land management issues, requiring differing levels of funding and support.

The area covers Dabyminga Catchment Cooperative (Tallarook, Reedy Creek Landcare Groups), Glenaroua Land Management Group, Nullavale/Pyalong West and the Sunday Creek/Sugarloaf Subcatchment Collaborative Inc. (Willowmavin, Sunday Creek/Dry Creek Groups). Land management issues range from weed control in the east & south, Rabbit control in the west and revegetation in the north of the sub-catchment.

Salinity remains a priority issue throughout the sub-catchment.

This year field days have been conducted on Patersons Curse and direct seeding with excellent attendances recorded. Local Area Planning is being addressed in the catchment to enable community groups to focus on the important issues and forward planning.

Several walks have been undertaken to familiarise landholders with their region, including Dabyminga Creek, a nature walk at Broadford, a wildflower walk of discovery at Tallarook, a look at Biodiversity in Mount Piper and spotlighting on Monument Hill near Kilmore. In addition the SWG has also been involved with Salt Week, participating in the Salinity education days at Longwood and Broadford as well as assisting with Water Week activities in Kilmore and Broadford in 2003.

The catchment has also participated in a Ministerial visit by the Federal Minister for Agriculture Warren Truss, discussions on weeds on VicRail land with Freight Australia, DPI, the CMA and Landcare, and the launch of new Mid Goulburn Broken Wildlife Guide in Euroa.



*Field days well attended.*



Other events include a Grazing Trial field day at Broadford, Whole Farm Planning, and Biodiversity Action Planning which looks at threats to native species.

The SWG catchment is vibrant and active, formulating plans to manage the natural resource issues facing landholders and making time to celebrate its achievements by participating in related events. Coordinators took part in the Landcare exhibit at the Upper Goulburn EnviroExpo, organised many information sessions on important issues like the Goulburn Broken Regional Landcare Support Strategy, farm safety, the State Landcare Conference, and organised a Community Dance to bring all the players together in celebration of their good work.

We also mounted displays at the Landcare Forum, the Kilmore Agricultural Show and the Alternative farming Expo in Seymour. All activities and successes have been highly publicised in the local press including radio interviews by Peter Mitchell and Cate Culley (DPI). Interviews have also been conducted on community radio to highlight land management issues and available assistance for a number of programs in the region.

Applications were submitted for funding from several sources throughout the year including EnviroFunds for Dabyminga, Glenaroua, Nullavale/Pyalong West; Shire Community Grants for Glenaroua; Threatened Species and Rare Species in Tallarook and Nullavale; Rabbit Buster in Pyalong and Glenaroua. The Gorse eradication program in the Sunday Creek area continues to be successful in attracting funding, likewise rabbit control and revegetation programs.

The SWG coordination program has attracted more than \$20K in funding from State and Federal funding sources for Landcare works throughout the region.

The SWG Landcare support office is located at the Department of Primary Industry in Broadford.

## Landcare

Janet Hagen

Hughes Creek Landcare Coordinator



The Hughes Creek Catchment Collaborative employed Candy di Camillo this year to assist Janet Hagen with facilitation of the rabbit and revegetation program. Coordination of Landcare projects has been extremely successful, managing a budget of \$105,000 for natural resource management works.

Landholders are encouraged to work on rabbit and weed management programs as a neighbourhood unit to better utilise funding and resources, with excellent results that have treated 43ha of rabbit infestation and 227ha of blackberry.

Landcare Coordination in the Hughes Creek catchment has been a partnership with officers from the Department of Primary Industry (DPI) Parks Victoria, Goulburn Broken CMA, Trust for Nature and many other stakeholders. With assistance and guidance from our partner agencies community groups have made great progress towards achieving their goals. More than 1100 personal contacts have been made this year, assisting 235 properties towards good natural resource and land management practices. Expressions of Interest for weeds, rabbits and salinity funding were submitted this year with a satisfactory outcome for the following projects from the past years funding, totalling \$105,000.

Landcare members have continued the review the local area plan which was originally published 6 years ago. Cate Culley from DPI Broadford facilitated these meetings focussing on pest plants and animals. Water quality is still to be finalised. We also responded with input to the Goulburn Broken Regional Landcare Support Strategy.



*Inter-generational Landcare activity*

The Hughes Creek Collaborative currently has a waiting list for subsidised rabbit warren ripping due to the success of rabbit buster promotion, and was also provided assistance to landholders with 1080 and liver baiting for fox control. Weed management has also been successful with programs focussed on blackberry in the high country and Patersons curse. Liaison with Parks Victoria has resulted in a pest plant and animal control program in local flora reserves, which was funded by the Landcare network.

*Learning local natural history at the EnviorExpo. Discovering 'scats and skulls' with Hughes Creek Collaborative Coordinator - Janet Hagen.*



Other projects include a survey of the upper reaches of Hughes Creek, by the Fresh Water Ecology unit, which identified large populations of native fish but did not find any Trout Cod.

The ongoing indigenous seed collection program held a workshop at Tallarook in November. Enough seed has been collected to cover the next years revegetation projects and the collaborative has the use of a new direct seeding machine, which will prove invaluable on the ii properties that are direct seeding in Spring. Four new seed orchards are being established at Whiteheads Creek to provide seed for understorey. 18,000 seedlings grown from local seed are being supplied by the Euroa Arboretum, including some rare species and another 6,000 were grown by Treeproject growers in Melbourne

Waterwatch has begun a sampling program on Hughes Creek where water is collected monthly to check *e coli* levels above and below the camping ground at Bungle Boorie. Coordinators assisted with a Rabbit Control field at Highlands a Native Pastures field Day at Whiteheads Creek, a Salinity Awareness tour of the Upper Goulburn and Saltwatch days at local schools. We also mounted displays at many local events and assisted with a Whole Farm Planning course at Highlands.



# The year in pictures

Poppe Davis  
Dryland Community Liaison Officer

Events and programs have been promoted throughout the upper Goulburn catchment to highlight the importance of natural resources projects.

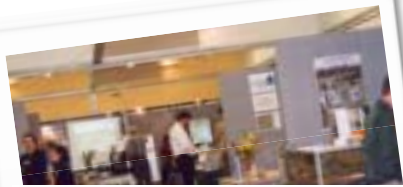
Our promotional activities include placing stories in local newspapers, participating in community discussion, holding information days, field days, and organising radio interviews to highlight forthcoming events.

These images represent some of the events and projects that assisted the Implementation Committee to engage its broader community.

## Salty Sports Days



*Salt Week activities with primary students at Broadford*



*Discovering the science behind natural resource management*

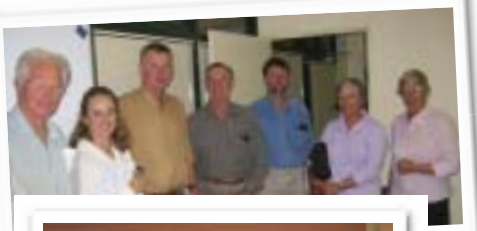
Water Week, Salt Week and Waterways revegetation days are a prime example of engagement with the upper Goulburn community and always well attended.

## Extreme makeover for Ford Creek

School students, their teachers, parents and CMA staff work together to create opportunities for community projects that will enhance the local environment and have a positive impact on natural resources catchment wide.



*Students assist with revegetation of waterways in Mansfield and Alexandra.*



*Round table discussions with Landcare and delegates at an upper Goulburn forum.*





Top row: L to R. Chris Doyle (Chairman), Russell Wealands (Executive Officer)  
Middle row: L to R. Mike Dalmau, Bob Dare, David Ritchie, Greg Smith (G-MW), John Thompson (Deputy Chair),  
Bottom row: L to R. Nigel Waterhouse (DPI), Margaret Hatton Neville Barwick. Peter Howarth,

## Upper Goulburn Implementation Committee

Shop 5, 10 High Street, Yea. 3717

Ph: 5797 2001

Fax. 5797 3199

Email. [chrisb@gbcma.vic.gov.au](mailto:chrisb@gbcma.vic.gov.au)

