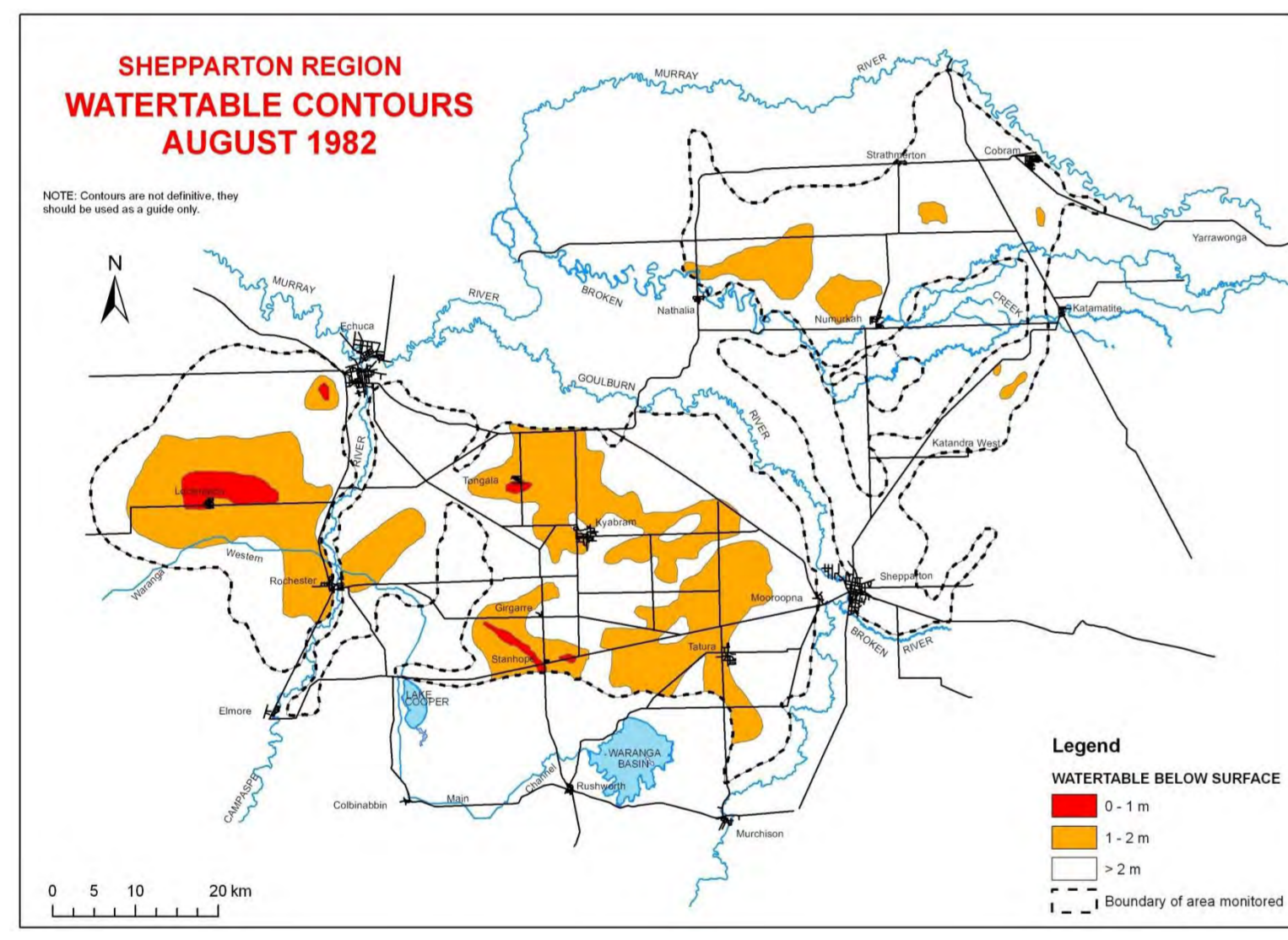
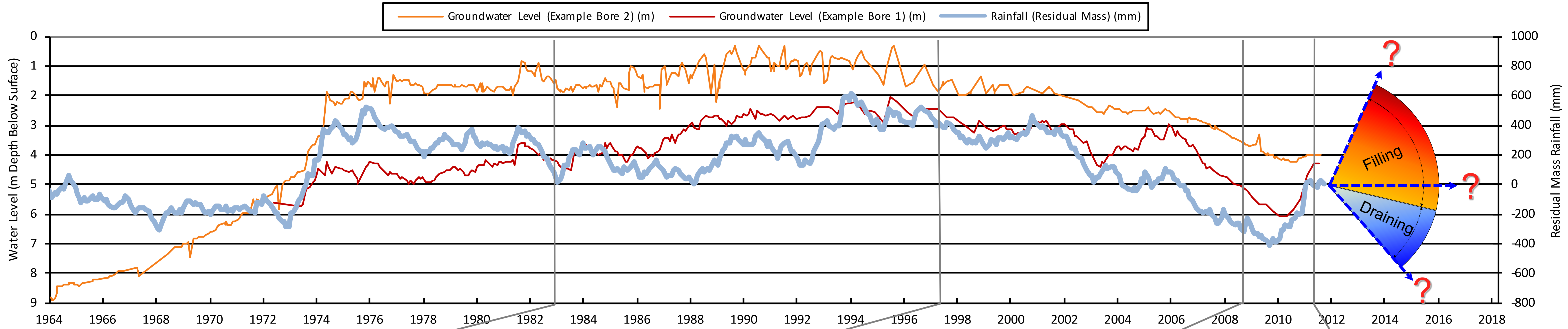
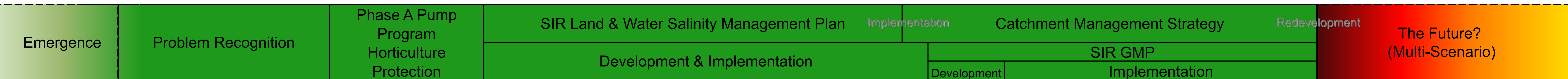
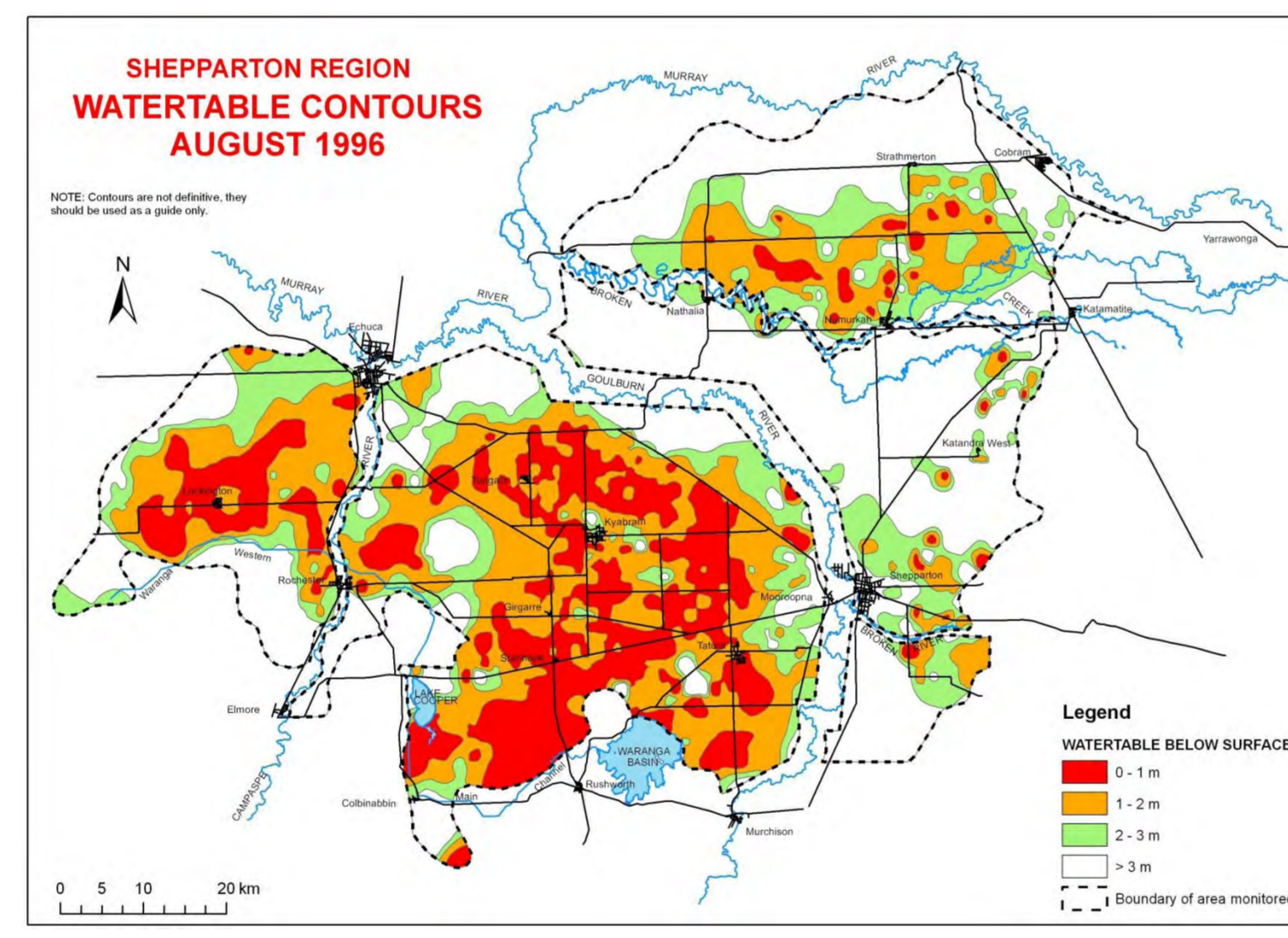


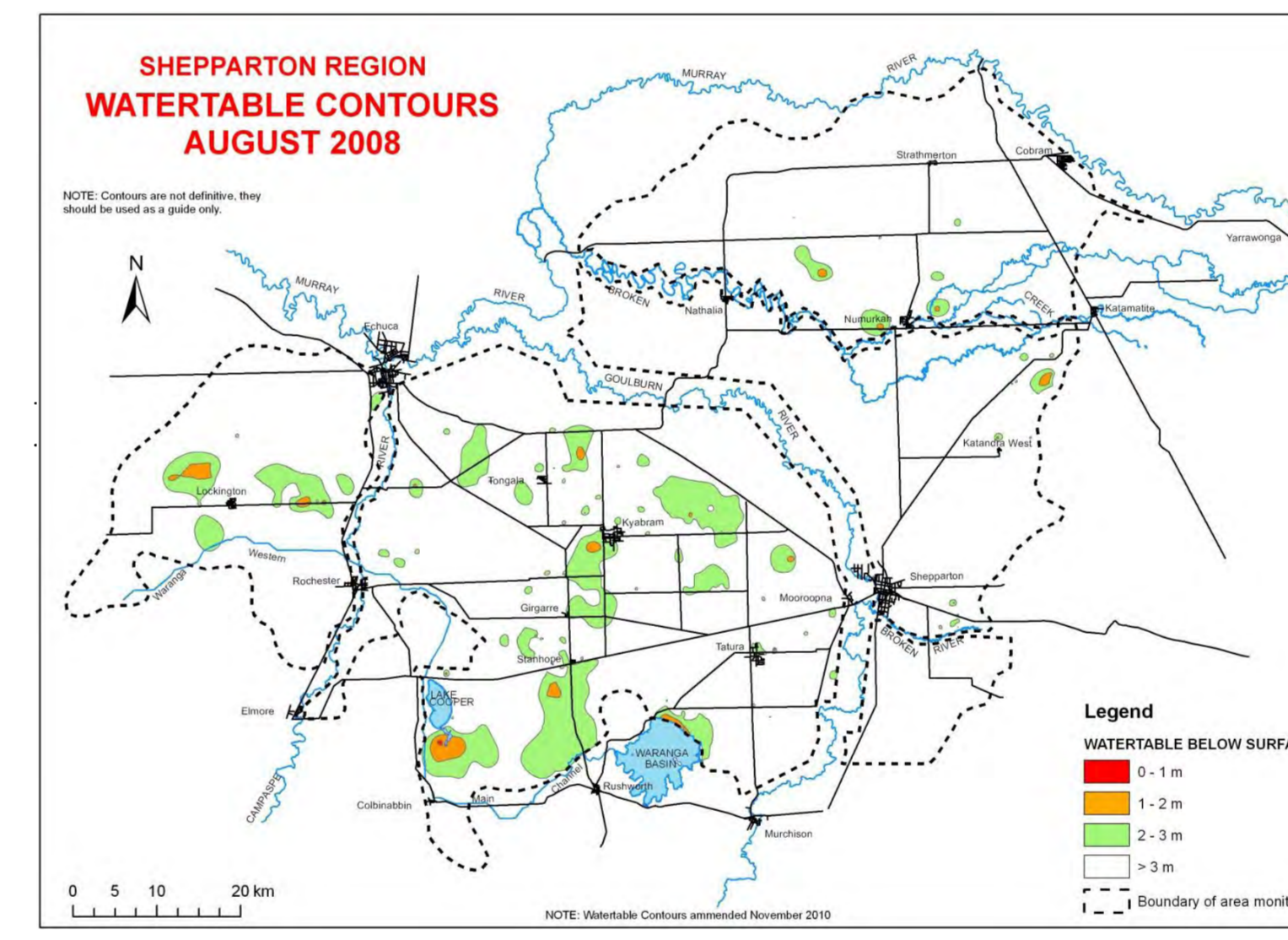
# Protecting the Investment in Modernised Irrigation: Adapting Successful Drainage Strategies to a Changing World



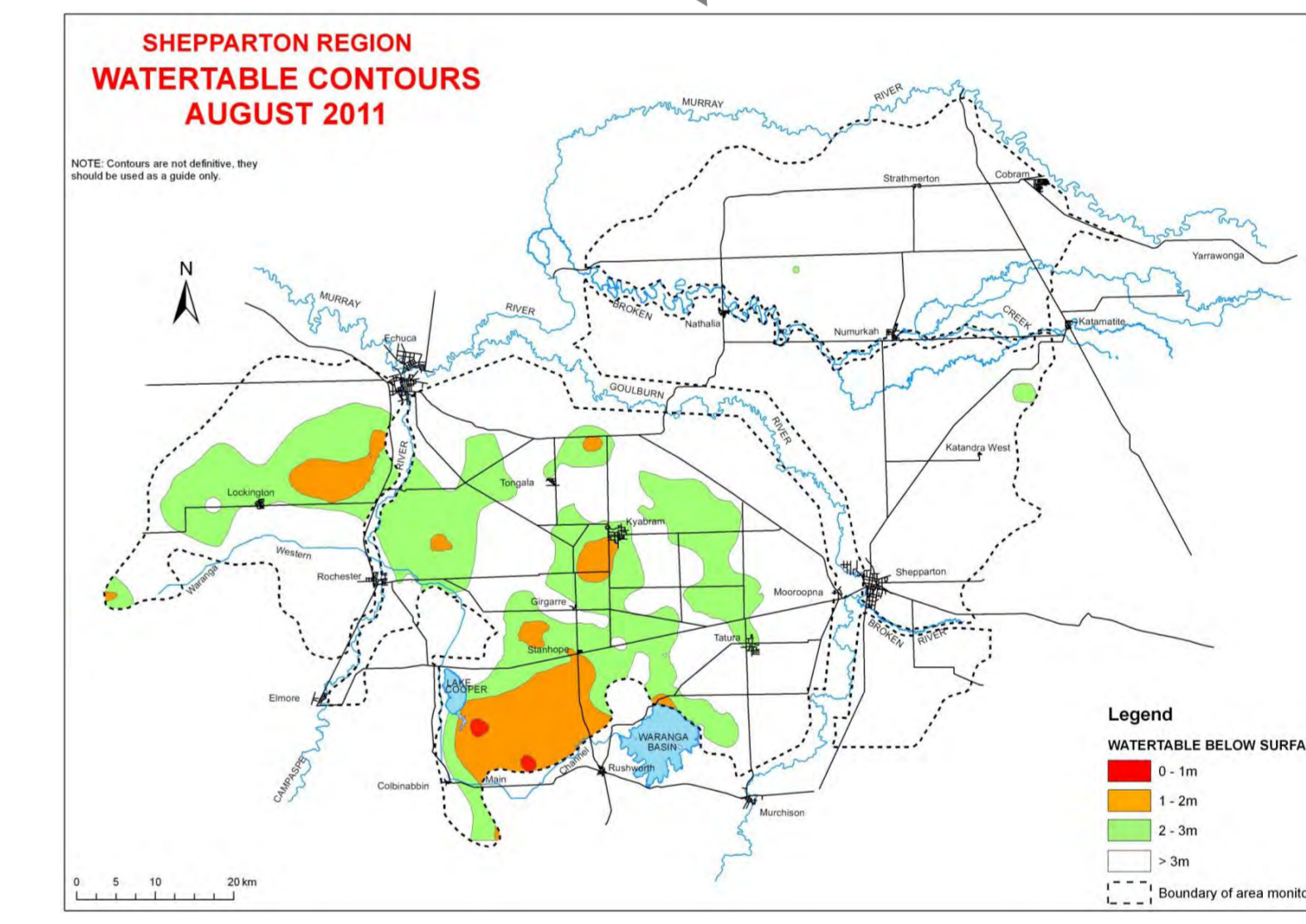
**WATERTABLE EMERGENCE**



**PEAK OF UNDERGROUND FLOOD**



**DROUGHT- WATERTABLE DECLINE**



**RE-EMERGENCE**

## RISK:

High watertables and waterlogging present significant salinisation risks to SIR agriculture, built assets and environmental assets.

Drought and modernisation have reduced this risk, however risks of high watertables in intensively irrigated areas in "normal" and "wet" periods still exist

## INVESTMENT IN SHEPPARTON IRRIGATION REGION:

Over the last 30 years, the community and government, have invested significantly in managing salinity threats facing both irrigation and the environment

Government investment has been over \$390 million (2011 dollars) to 2010/11 (GBCMA 2011)

The annual economic output of the SIR is in the order of \$5.5 billion (GBCMA 2006)

Modernised Irrigation Infrastructure Investment (NVIRP 2011)  
 – Stage 1: \$1 billion  
 – Stage 2: \$1 billion

## POLICY DIRECTION:

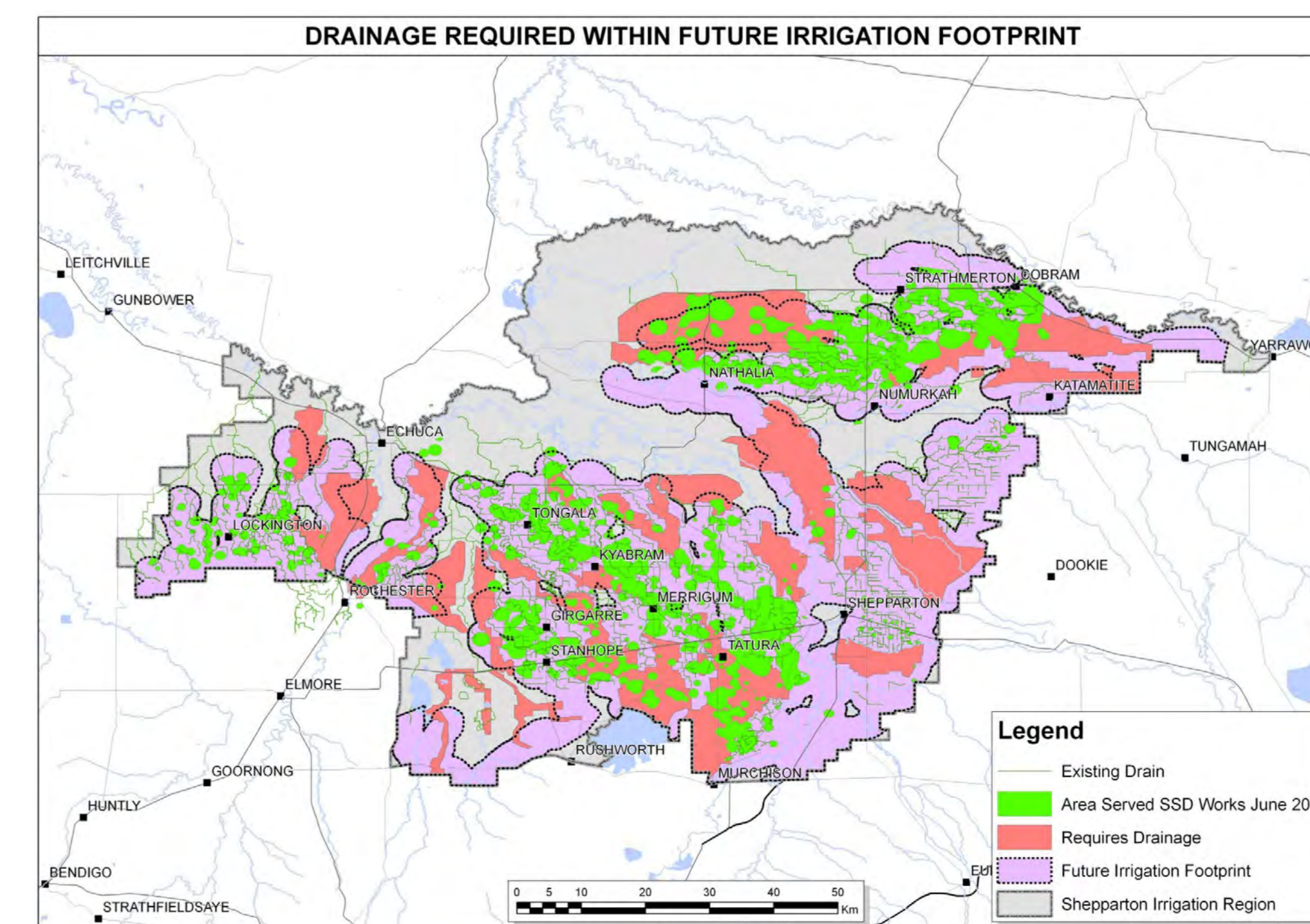
### Drainage & Irrigation

"Irrigation drainage is essential for sustainable irrigated agriculture and helps:

- remove excess water, managing watertables and enabling salts to be leached from the soil profile; and

- maintain the productive capacity of landscapes." (DSE 2010)

## FUTURE MODERNISED IRRIGATION IN THE SHEPPARTON IRRIGATION REGION



### Partnership Acknowledgement

This project is funded as part of the Goulburn Broken Catchment Management Authority Regional Catchment Strategy in the Shepparton Irrigation Region and is provided with support and funding from the Australian Government and Victorian Government. This project is delivered primarily through partnerships between the Department of Primary Industries, Goulburn-Murray Water, Department of Sustainability and Environment, the Goulburn Broken Catchment Management Authority and other bodies.

### References:

DSE (2010). *Victorian Irrigation Drainage Program: Strategic Direction 2010-2015*. Department of Sustainability and Environment, State of Victoria.  
 GBCMA (2006). *Shepparton Irrigation Region: Why investing in the sustainability of the Shepparton Irrigation Region pays dividends*. Goulburn Broken Catchment Management Authority, Victoria.  
 GBCMA (2011). Email 5 December 2011 <menon.parameswaran@dpi.vic.gov.au>. Department of Primary Industries, State of Victoria.  
 NVIRP (2011). *Stages*. Northern Victoria Irrigation Renewal Project. URL: <http://www.nvirp.com.au/theproject/stages.aspx>. Accessed: 17/11/2011.  
 SPPAC (1989). *Shepparton Land and Water Salinity Management Plan (Draft)*. Salinity Pilot Program Advisory Council, Victoria.

## THE FUTURE:

- Variable climatic conditions
- Changing irrigation footprint
- Future Irrigation Drainage needs to be targeted and adaptable

GOAL: Programs to support adaptive management approach for individuals, organisations and community to actively manage risk/uncertainty relating to re-emergence of rising watertables.

**The community and government agencies have to work together to ensure that we have the right infrastructure, in the right place, and managed in the best manner to protect the region's assets**