



Upper Goulburn Muster

The Newsletter of the Upper Goulburn Implementation Committee

Vol 6. No 2

November 2005



New Chair for Implementation Committee

Chris Doyle has retired as Chairman of the Upper Goulburn Implementation Committee [UGIC]. He announced his decision at the recent Annual Landcare Awards event, hosted by UGIC at Trawool.

UGIC is responsible for the rollout of the Goulburn Broken Catchment Management Authority's (CMA) Regional Catchment Strategy, the blueprint for the future environment of the Goulburn Broken catchment, in the Shires of Mansfield, Murrindindi, and Mitchell. Chairman of the CMA Board, Stephen Mills AO, and

Chief Executive Officer Bill O'Kane, paid tribute to the outstanding commitment and contribution to the management of natural resources in this extremely important catchment, given by Chris during his seven years in the position.

Neville Barwick has been elected to the Chair's role on the Upper Goulburn Implementation Committee, one of three community based committees of the Goulburn Broken CMA. A retired architect and top-level public servant, Neville has been a

member of UGIC since 2002. He was responsible for the construction of Melbourne Airport and later served as Assistant Director General Education; and Director General Youth, Sport, Recreation; and Racing and Gaming.

Neville and his wife Carole moved from Melbourne to their farm in Nulla Vale in 1993 where they have become closely involved in Landcare and the support of their local community.

See photo on p2.

Funding was on the Agenda

A very full program of funding options was presented at the Annual UGIC community information day at Trawool in August.

Presenters from the Dept of Primary Industry, Goulburn Murray Water, Goulburn Broken CMA, National Landcare Program, Mitchell Shire and the Australian Government gave enlightening presentations on the various funding streams available to community groups.

Presenters provided information on prioritising environmental

projects to maximise their potential for success in the funding process.

Delegates said that the information was very useful and that the presentations cleared up confusion on which Agencies and Departments held responsibility for the many funding buckets available in the catchment.

A copy of the presentations is available on disk or can be provided in PDF format version 7. Contact Poppe Davis in Yea ph 5797 2001 for further information.

REMINDER

Your newsletter is now available in PDF format so all members of your group or organisation can receive it in colour.

Would you like to distribute this information electronically to your members?

Contact Poppe Davis on 0427 866 328 or email

popped@gbcm.vic.gov.au

Perpetual Trophy Winner

Lesley Dalziel's nomination for the Hubert Miller Perpetual Trophy was no surprise to the assessment panel for this years Upper Goulburn Implementation Committee Awards.

However, Lesley was surprised and showed enormous humility in accepting the certificate and trophy from Local Member for Seymour, Ben Hardman.

Lesley was nominated for her years of work to highlight environmental issues in the Seymour area and the leading role

she played on the steering committee for the Light Horse Park project.

The Awards were presented at a dinner in honour of the recipients at Trawool resort in August, following this years UGIC community information day where the focus was on the various funding streams available to community groups.

For further funding information please contact Katie Brown in Yea on Ph 5797 2001.

Jolly Roger

The Upper Goulburn Landcare Award for Excellence was presented to Roger Cook of Kinglake Landcare group during a presentation dinner at Trawool Resort in August

Presented by Sophie Panopoulos. MHR, Member for Indi, the Award recognises excellence in Landcare members who have been long standing members of their committee and who have performed their role in an exceptional manner.

Roger Cook was nominated for his commitment to natural resource management in the Kinglake area and his ability to instil environmental values in young people.

Since moving to Kinglake over 20 years ago, Roger has been a leading and active volunteer member of the 'Friends of the Kinglake National Park', which carries out monthly work on the Park.

Roger was involved with the foundation of the Kinglake Landcare Group in 1997 and has been Group President since 2000.

His current occupation as Bushland Coordinator for the City of Hume, and academic study, has given him a profound knowledge of local native flora which he is always willing to share with other members of the Landcare Group and the community.



Roger and Sophie Panopoulos enjoy the moment.



Lesley Dalziel with Ben Hardman—surprised at her win.

IN THIS ISSUE

Changing Chairman	1
Awards	1
Weeds announcement	3
Premier visits CMA	4
Pest Plants & Animal	5
Salinity Grants	6
IC brochure launch	8

THE UPPER GOULBURN MUSTER
IS PREPARED FOR THE
UPPER GOULBURN IMPLEMENTATION
COMMITTEE
EDITOR
POPPE M DAVIS
PHONE 5797 2001
SHOP 5, 10 HIGH STREET, YEA 37 17
EMAIL: popped@gbcma.vic.gov.au

FAQ Get to Know...

Lillian Parker-
Executive Officer

Main job. Executive Officer
for Upper Goulburn
Implementation Committee



Where Yea office of
GBCMA

**How did you get involved
with NRM** did Environmental Science at University
1970's. Involved in Land and Water Management
Planning in the Riverina from 1992 to 2005

Favourite colour. Blue

Favourite food. Fresh oysters off the rocks with a
good chardonnay

Reading at the moment *Managing Change:
Australian Structural Adjustment Lessons for Water
(CSIRO)*

Like listening to anything on the radio "Cricket on
the radio....." (An ABC fan. Ed)

Best band/singer ever Eagles (No argument. Ed)

How do you see the environment in 10 years time
...more native vegetation, clustered development with
proper services, clean water flows

Where do you see yourself in 10 years time. ...still
working with the community to improve our
environment

Do you have a pet and what is its name.
border collie "Molly"

Hobbies. Reading, watching my children play sport,
scoring cricket

Ever been overseas Singapore, UK and Europe in
1973 and 1980, England and Scotland in 2005

What is your favourite destination
Scotland, Greece

**Have you observed environmental issues we
could learn from** use of wetlands for storm water etc
management, mechanisms for integrating remnant
vegetation/landscape amenity into farming systems,
harnessing lifestyle landholders into natural resource
management, EMS for farming enterprises

**If you had the chance what would you do to make
a difference.** ...work out how to get more of the
community involved in NRM

Changes to Regional Landcare Responsibility

**Katie Brown has assumed the role of
Regional Landcare Coordinator in the
Goulburn Broken catchment.**

Katie replaces Heather Holder, who has
taken a position in Siberia teaching English
to school students and businessmen.

The Regional Landcare Coordinator is
responsible for overall management of
information and planning for Landcare in
the Goulburn Broken catchment and liaison
with Landcare Victoria.

The Goulburn Broken Regional Landcare
Strategy, which was launched early in
2005, is the blueprint for Landcare support
and outlines initiatives to assist Groups
remain viable into the future.

Katie will be responsible for keeping
Landcare facilitators up to date with new
information and programs and will retain
some of her Community Program
Management responsibilities as well.

The balance will be moved into the
Dryland Community Liaison Officer's
portfolio and Poppe Davis returns to full
time presence in the upper Goulburn,
working from the Yea office.

For further information on the Regional
Landcare Coordinator contact Katie
Brown in Yea on Ph 5797 2001.

Neville Barwick takes on UGIC Chair

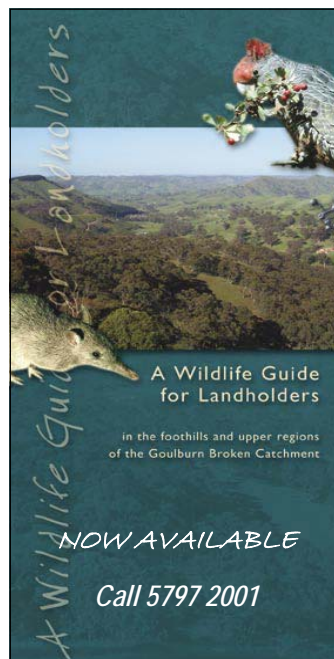
From p1.



As new Chair of the upper Goulburn
Implementation Committee, Neville Barwick
will lead a committed group of committee

members who are
responsible for
implementing the
Regional catchment
Strategy in the upper
Goulburn region..
CMA Board Chairman,
Steve Mills, finalised
Neville appointment at
the Funding Seminar in
August.

The UGIC has recently
developed a brochure
outlining its charter, roles and
responsibilities.



Paddock TREES



Information brochure available on
saving the grand sentinels of farm
paddocks across the country.

Paddock trees are disappearing fast
due to clearing for subdivision and
natural attrition.

For your information brochure
please contact the CMA on

5797 2001

**Happy Christmas to all the Landcare
Community, our Shires and Agency
Partners, and our colleagues.**



Spirit of Place artworks on display

Four additional paintings have been added to the upper Goulburn community travelling collection following the Tallarook Art Exhibition in October.

Artists used a variety of mediums to produce some very special pieces, which celebrate spirit of place in the upper Goulburn region.

The Upper Goulburn Implementation Committee, in partnership with Mansfield, Mitchell and Murrindindi Shires sponsored four entries in the exhibition for inclusion in the collection, which was inaugurated in 2004.



Goulburn River by Jayne Henderson

The collection is on show in each of the Shires and is moved approximately every three months, to allow for the maximum number of people to view the works.

This years works included an installation piece titled "War and Peace", which due to its size will be moved every six months and is currently on show at the Mansfield Council offices.



War & Peace by Steve Wolfe



Minister declares Noxious Weeds

Environment Minister John Thwaites recently announced the declaration of twelve noxious weeds.

Twelve nationally recognised Weeds of National Significance (WONS) species have been declared in Victoria as restricted weeds, meaning they can no longer be sold or traded within Victoria.

20 species are recognised nationally as WONS - weeds that cause significant production or environmental damage within Australia.

"Victoria took a lead role in establishing the WONS list, and we've been working hard to have these weeds assessed and declared under Victorian legislation as part of a comprehensive review of our noxious weeds list," Mr Thwaites said.

"All 20 WONS, with the exception of some willow species, are now declared noxious weeds within Victoria. The excepted willow species will also be assessed and considered for declaration as a component of the state-wide review of noxious weeds. These assessments will assist in developing

strategies for willow management across the State"

The decision to declare these species noxious weeds was based on their invasiveness, potential for spread and impacts on environmental, economic and social values.

Michael Gainger, Chief Executive Officer of the Nursery and Garden Industry Victoria welcomed the declaration of the twelve new weeds:

"We have been working actively with our members to voluntarily remove 57 plant species from sale, including all WONS species.

NGIV is committed to proactively preventing the spread of plants that have adverse impacts on environmental, economic and social values." Mr Gainger said.

(From Ministers Press statement....Ed.)

Please see the list at the end of this newsletter or call DSE Customer Service on 136 186 for further information

Infobites

The upper Goulburn website is now up and running with information specific to the upper Goulburn catchment. You can log on at the following address.

<http://www.gbcma.vic.gov.au/theuppergoulburn/default.asp>

The Whiteheads Creek, Hughes Creek and Seymour Show sponsored a land management award this year which was won by Charlie Newton from Avenel, who has protected a large area of vegetation and revegetated his farm while conducting a profitable farming enterprise.

Awards were offered for excellence in land management of properties over 40ha whether or not they were involved in Landcare.

Local Victorian Landcare Award winners were Allan and Shiella Stute for the environmental works they have achieved on their property at Broadford.

The Stute property is regarded as a 'stand out' property for its sound mix of environmental and sound farming practices.

Steve Smith from DSE Alexandra has run a threatened species bus tour where participants looked at the habitat of the Golden Sunmoth. Other items of interest included the Buxton Silver Gum, the nationally threatened Barred Galaxias and the Leadbeaters Possum.

The Buxton Silver Gums Reserve is one of only two sites where Buxton Gum species survives in the wild. The tour was a great success with participants being able to view the brilliant colours of the Barred Galaxias through glass before returning them to the stream.

Premier opens new CMA building

The Victorian Premier, Steve Bracks officially opened the new Goulburn Broken CMA building in Shepparton on November 4th.

Visitors from throughout the catchment attended the event which included a 'welcome to country' by indigenous elder Francis Mathieson, assisted by Jade Miller, of the Yorta Yorta people and a wonderful presentation on the didgeridoo by Graeme Briggs.

After the official opening Mr Bracks assisted students from St Georges Road Primary School to plant some trees and grasses to promote the new River Connect project—aimed at encouraging the community to rediscover the river and surrounding areas.

"I think it is an example of the community

taking responsibility for river improvement," Mr Bracks said.

"And it's about partnerships with other organisations which will really make a difference to river health in the future."

[Quote—Shepparton News]



The Premier Steve Bracks addresses guests.



The evocative didgeridoo.

UGIC allocates regional portfolios.

The Upper Goulburn Implementation Committee (UGIC) has been focused for over a year on ways to ensure that its members develop a profile for the committee in their community.

The upper Goulburn area is divided into three Shires, Mansfield, Mitchell and Murrindindi, with UGIC representatives in each council area.

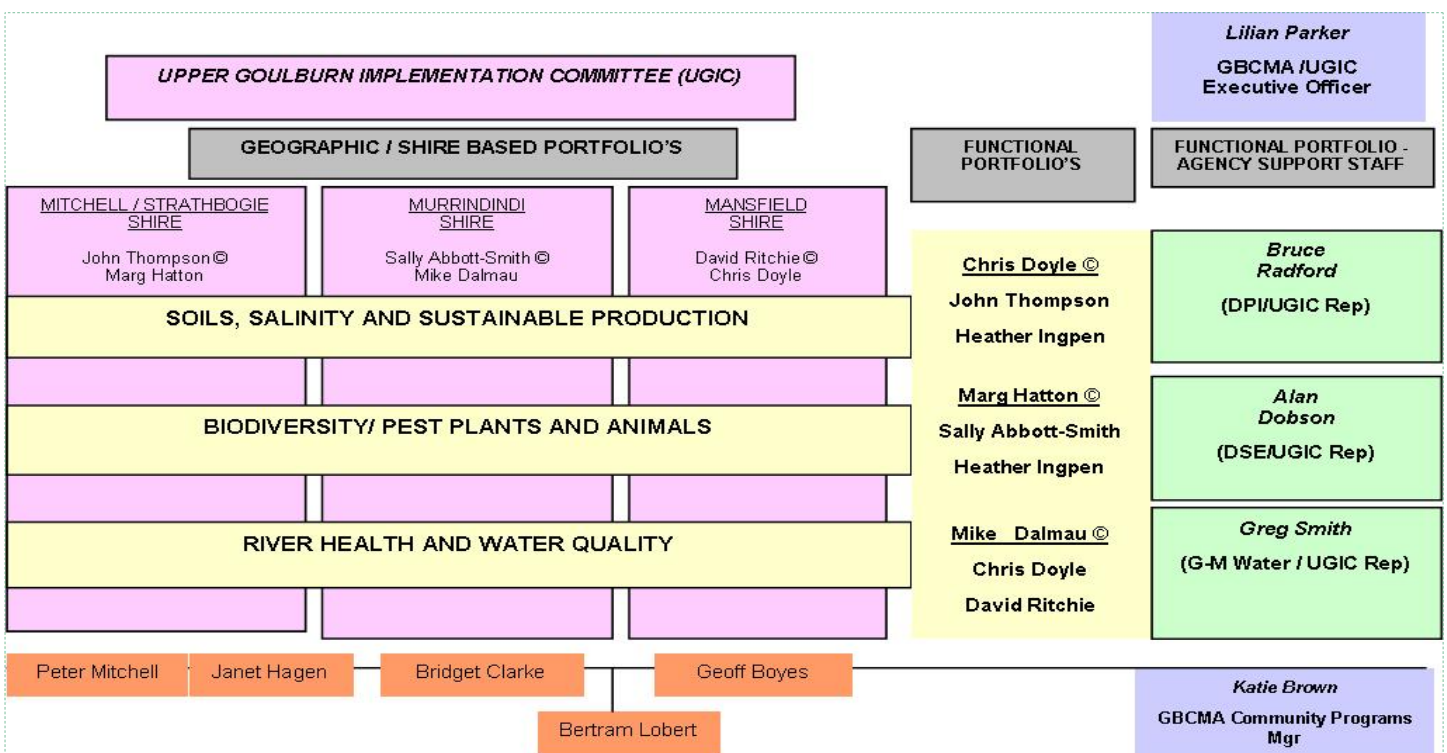
As well as representing their own Shire on the UGIC, members have also been allocated environmental portfolios to enable accurate feedback to the committee.

Whilst the UGIC is a community based committee reporting to the CMA Board, it also has representation from other Agencies in the catchment including, Goulburn-Murray Water, Department of Sustainability & Environment

and Department of Primary Industries.

The allocation of portfolios enables members to focus on specific natural resource management issues to a point that they can become the local contact for information in the community.

The table below explains the allocation in brief.



Changes to regional PP&A

The latest and best summary of what is happening with the Pest Plant & Animal division at the Dept of Primary Industries (DPI) has come from a recent story in the South West Goulburn Newsletter, written by Peter Mitchell.

Peter has attended several briefings and has reached a pragmatic conclusion that summarises the current situation very well indeed.

We know that there are changes in staffing levels in the PP&A division and that catchment officers (CMOs) will be based at Seymour, Broadford, Mansfield, Alexandra, Benalla and Echuca.

It is unlikely that these staff will work solely in their area and most likely that they will have state, regional and local roles. With reduced resources, the Department will focus attention on preventing weed establishment rather than treating infestations that have already occurred.

Patersons Curse has become a lower priority than in the past due to its persistent spread and there is little hope of eradication within the current technology.

However DPI will continue to provide 1080 through all locations and rabbit free assessments will be carried out. Compliance programs will be run locally with follow up by DPI staff throughout Victoria to ensure that orders are being carried out for weed and pest animal control.

Responsibility for weed and pest animal control sits fairly and squarely with the landholder and in recent years we have seen a decrease in the level of funding allocated to this area.

It is anticipated that staffing levels for PP&A will soon be announced. Until then landholders should continue to do all they can to control weeds and pest animals on their properties.

Protecting Paddock Trees—Kim Wilson D.P.I.

The Paddock Tree Project recently held two field days hosted by Strath Creek and Warrenbayne with over 50 landholders attending the days. The days provided an opportunity for landholders to learn about the productive and ecological benefits paddock trees provide within our landscape.

The field days covered topics on the importance of paddock trees from farm productivity (by Tony Parker, DPI Rutherglen), invertebrates (by Allan Yen Entomologist for DPI Knoxfield) and to bats (Lance Williams, Trust for Nature).

The days also provided an opportunity to



launch the paddock tree package. The package consists of informational material on the benefits of paddock trees in both productive and ecological landscapes, also including practical information on methods for protecting and restoring paddock trees.

The paddock tree project has been supported by Department of Sustainability and Environment, Department of Primary Industries and Goulburn Broken Catchment Management Authority. For more information on paddock trees or a copy of the paddock tree package, please contact Kim Wilson on 5784 0623 or kim.wilson@dpi.vic.gov.au.

Aerial baiting trials for wild dogs

The first stage of an aerial baiting program will begin in December according to Environment Minister John Thwaites. Mr Thwaites says that the program will start with non toxic baits, deployed from the air, and a follow up monitoring exercise to determine the uptake with a view to protecting non target species like the Spotted-tailed quoll.

An estimated 3600 sheep and lambs are taken every year by wild dogs. The program targeting North east Victoria will attempt to reduce the number of feral canines.

The GBCMA website is under constant renewal

Use our site to link with other environmental sites and Landcare Groups.

Goulburn Broken CMA at



www.gbcma.vic.gov.au

Expressions of Interest close

This year there are 145 Expressions of Interest for environmental funding under review by the technical panel and they will be assessed before Christmas.

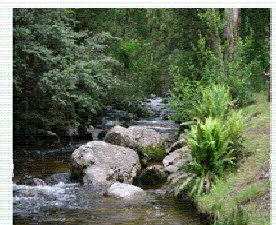
The GBCMA plans to have the draft single bid prepared for consideration by Government investors by 20th January 2006.

Projects that can be funded from other sources have been directed to other funding buckets this year, making the whole process less time consuming for Groups and much more streamlined.

For information contact Katie Brown
Ph 5797 2001

UGIC Annual Reports available now in hard copy or CD Rom.

Key Program Reports 2004 - 2005



[Catchment Information](#)
[Native Vegetation Management](#)
[National Heritage Trust](#)
[Pesticides & Pests](#)
[Rural Landcare](#)
[Water Quality](#)
[Wildlife & Bushy Wood](#)
[Soil Conservation Landcare](#)
[Sustainable Dryland Agriculture & Land Management](#)
[Community Engagement](#)

Tinner Goulburn Implementation Committee

Contact Ph 5797 2001

for your copy.

Communications in focus



A communications forum was held recently in Yea, to focus attention on meaningful ways to engage regional communities.

Presenters Lisa McKenzie (Impress Publicity), Poppe Davis (CMA) and Katie Brown (CMA) showed examples of best design for promotional materials and advised on layout and positioning for material to be used in the press.

The presenters also advised on some basic rules for designing material, including text, images and main message. Copyright and plagiarism were also covered.

Notes from the forum are available from Katie Brown on Ph 5797 2001.

Community Grants change direction

The Community Salinity Grants (CSG) program will undergo a change in direction as a result of a recent program evaluation.

The program has run since 1996 to provide funding for small salinity education projects and has been run by the Community Education Officers in each of the three Implementation Committee regions, with support from the Goulburn Broken CMA and Department of Primary Industries.

Changes to the current program are based solely on availability of resources and will place responsibility for allocation of funding and updating guidelines with the three Implementation Committees.

CSG's have been seen as an excellent way to spread the salinity message in an educational format to landholders and students throughout the Goulburn Broken catchment. Applications have also been successful in areas that are not considered salinity prone, as it is vital for people at the top of the catchment to understand the importance of protecting vegetation for water quality downstream.

In the recent round of CSG allocations, over \$8,000 was granted to upper Goulburn applicants.

Announcements of final grants will be made in December, after they have been ratified by the Goulburn Broken CMA Board.

Landholders eager for advice

What is the flowering cycle of a native plant?

Do I need a permit to collect native seed?

Learn about native seed collection—answer these questions and many more at the

Indigenous Seed Collection Workshop

Wednesday 14th December

10am GBCMA office

5/10 High St, Yea

Saturday 17th December

10am DSE Office

Highett St, Mansfield.



Contact Geoff Boyse

Ph 5779 1324

0429 166 775

One hundred and thirty three landholders participated in the recent Selecting and Managing a Rural Property workshop at Mike and Georgie Dexter's property near Alexandra.

Participants were local landholders although many live in Melbourne. Most own properties of less than 100 acres (or 40ha) throughout Murrindindi Shire. Some also came because they are looking for rural lifestyle opportunities in the area.

A partnership of the Goulburn Broken Catchment Management Authority, Murrindindi Shire, Department of Primary Industries and local Landcare groups, the workshop covered a range of land and catchment management issues as well as

planning considerations. Given the unusually dry conditions, drought preparedness and Bushfire Blitz were added to the already full program.

Importantly, the workshop gave landholders an opportunity to meet key people from the Shire, DPI, GBCMA and CFA who can provide advice about planning and natural resource management. Landholders were also made aware of what support and information is available to assist them with improving environmental management and sustainability on their properties. Landholders interested in further information can contact Ann Jelinek at

ecoviews@lexicon.net

Hughes Creek gets Rescue Team

For Halt the Salt!

The Guinness record for the most trees planted in an hour could be broken next year when the Mafeking Rover Camp comes to Hughes Creek for the Murray Darling Rescue event.

They are aiming for 50,000 trees, 500 participants and 50ha revegetated and hope to plant the one millionth tree for the project! Murray Darling Rescue is Greenfleets largest tree planting project and is an ongoing partnership with Scouts Australia. Landcare will play a major role by identifying the sites for revegetation and the trees, stakes and guards are all supplied FREE.

Contact Janet Hagen to nominate a site for trees to be planted on your property.

Ph 5790 4268 before 16th December 2005.

Managing WEEDS on public land

About eighty participants, representing sixteen organisations, converged on Wangaratta Airport recently, for the inaugural Regional Forum on weed management, as part of the Tackling Weeds on Private Land (TWoPL) initiative.

The first in a series planned for regional areas across the state over spring and summer, the forum provided opportunities for participants to highlight their contributions to weed management, discuss implementation issues and to establish contacts for future collaboration.

Participants commented on the value of being able to compare their work with the work of others in similar projects and enhance what is already happening on-ground. A follow up evaluation of the forum will identify its effect in influencing ongoing collaboration and partnerships.

Demonstrations of vehicle/machinery field wash down units used to prevent the spread of weeds attracted considerable interest during the afternoon session. Powercor and

DPI presenters showed how vehicle and machinery hygiene wash downs could be integrated efficiently into the field operations of various industries.

More recently the Department of Sustainability and Environment has announced an opportunity for community groups and landholders to participate in identifying sites where blackberry rust fungus might be used to biologically control this insidious weed.

The focus will be in public land as part of a state-wide program to control blackberry infestations on public land.

The project will be taken out to the community by Parks Victoria to encourage locals to take part in this initiative.



Flowerhead of mature Patersons Curse



EXPRESSION OF INTEREST

BLACKBERRY CONTROL ON PUBLIC LAND

The Department of Sustainability and Environment has launched an initiative to utilise the blackberry rust fungus as a biological control for blackberries on public land.

Expressions of interest are now being sought to identify suitable release sites and the EOI process closes on

December 16th 2005.

Please contact Katie Brown Ph 5797 2001

for an expression of interest form.

Snapshots from near and far

Previous Regional Landcare Coordinator, Heather Holder, is in Siberia (Russia) teaching English to students and businessmen. Heather has been keeping up a steady diary of events since her arrival, including some side splitting revelations of settling into Russian life with winter approaching.

Heather:

"I have now purchased my winter coat (пальто / pal'to) and gloves (перчатка / perchatka). I had been down to the markets before and had a look at coats and gloves but it was all really confusing – well I thought so having never been shopping for something that was going to keep me warm at -40°C. A lot of the coats I saw at the markets I saw women wearing them now, so then I wasn't sure if they were winter (зима / zima) coats or autumn (осень / osen') coats. Anyway Ira helped me to purchase exactly what I needed for winter."

Heather has recently been moved back into her freshly renovated flat, which when she arrived had some serious plumbing problems. Too many to mention here but her description was entertaining.Ed.

Biological Farming

Gwyn Jones delivered a biological farming course to 15 people recently at Yea.

The course is part funded by FarmBis and the Biological Farming Interest Group has now completed 6 days of the 10 day course.

The group participated in two paddock walks to look at soil and benchmark with laboratory tests. Based on the Albrecht Theory on balance between biological, chemical and physical components, the course teaches how to achieve better production through healthy soils.



If it tastes good.....eat it!

International River Health Conference

The Goulburn Broken CMA sponsored 9 selected schools from across the catchment to participate in this year's International River Health Conference, held at Mildura in October.

The conference was a huge success with two upper Goulburn schools creating environmental presentations for the benefit and enjoyment of other delegates.

St Patricks Primary School, Seymour, produced an interactive presentation to highlight their water monitoring program in the Kilmore rea. Their findings were very interesting and noted the various different elements of ground water, its appearance and behaviour.

Merrijig and Jamieson Primary Schools teamed up to produce a main stage production using giant puppets which took the conference by storm. Depicting a



tree, a parrot and a fish, students delighted delegates with their environmental story.

One adult said she had not seen anything like it since the Sydney Olympics!

Most of the students stayed at the Grand Hotel, which was a real hit with the youngsters. They were able to cool off in the pool before going to dinner and the evening sessions.

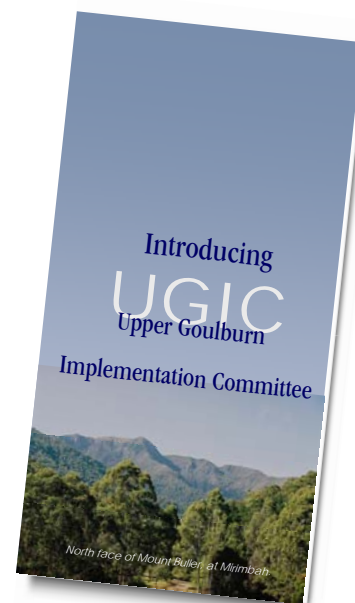
The Goulburn Broken sponsored group was a credit to the catchment.

The IC explained

A new brochure explaining the Charter of the Upper Goulburn Implementation Committee has been produced and is now available from the CMA office in Yea.

The brochure outlines the IC's position in the corporate structure of the CMA and its roles and responsibilities as a community based committee.

For copies of the brochure contact the CMA office on 5797 2001 for a hard copy or email popped@gbcma.vic.gov.au for a PDF file.



Tree Grower Success

The Upper Goulburn Master TreeGrower Program was extremely successful and motivational for 35 participating landholders.

Participants were very enthusiastic throughout the 8 day course spread over 4 months. They eagerly shared their respective, diverse skills and knowledge, resulting in lively discussions.

Local sponsorship, combined with that from The University of Melbourne, was critical to achieving widespread advertising to attract interested participants for the Upper Goulburn MTGP, high quality presenters, practical on-site demonstrations with machinery, bus hire, effective coordination, communication and promotional activities.

The Upper Goulburn Implementation Committee contributed \$1000 towards the success of the program.

A key to the program's success is the excellent course structure and content ideas developed by National Coordinator of MTGP, Rowan Reid, giving the local coordinators, Ann Jelinek and John Woodley, a practical and consistent framework to adapt and flesh out for the



local program. The Upper Goulburn MTG program had a good balance of practical and theory about growing trees for profit and conservation.

Another important element is that the

program is coordinated by local people who have good networks within their local communities and the media. This bottom up approach ensured that the program could be adapted to suit the local conditions, environmental considerations and importantly, the needs of participants.

Like other MTGP groups, the Upper Goulburn participants will continue networking and organising occasional field days to keep up their enthusiasm and learning opportunities.

Has your Group had a change of Executive members recently? Please let us know so you don't miss out on all the catchment and funding news.

Call 5797 2001 or email cbrish@gbcma.vic.gov.au

Remember your newsletter is now available in PDF format so all your members can access the news and information.