



# Upper Goulburn Muster

The Newsletter of the Upper Goulburn Implementation Committee  
Vol 5. No 2

December 2004

## Russell retires after 9 years with CMA

The Goulburn Broken CMA Board recently hosted a farewell dinner at Trawool for Russell Wealands its Executive Officer, Upper Goulburn.

Commencing 9 years ago and establishing the Yea Office for the Upper Goulburn Waterways Authority Russell worked with the Authority's Board to reverse the trend and improve the condition of the region's rivers and streams. Ian Wood, Chairman of UGWA at the time, commented on Russell's dedication and commitment to restoring the ecological values to our waterways and wetlands.

Russell commenced his engineering career with the State Rivers & Water Supply Commission and worked there for 23 years gaining broad experience in irrigation, urban water supply, dam, pipeline and earthwork construction as well as design. He specialised in waterway and catchment management with the State Rivers and the Department of Natural Resources since 1981. During that period he was seconded to the Australian Government working as a River Expert on the Bah Bolon Project for 18 months on the island of Sumatra, Indonesia.

Following establishment of the State's 9 Catchment Management Authority's in July 1997 Russell was given the challenge of overseeing the development and delivery of integrated natural resource programs in the 10,500 sq km upper Goulburn catchment – programs delivered by the CMA, Department (NRE/DPI), GMW and Landcare. With an overall budget of some \$4.3m these programs included River Health, Dryland Salinity, Biodiversity, Pest Plants and Animals, and Catchment Planning. Since then staff numbers at the CMA's Yea office have grown from 6 to 11 and the partnership approach with Local Government, GMW and DPI have

flourished. Russell recently played a lead role in a community project to open up the Yea Wetlands and build a suspension bridge across the Yea River to provide better access to the wetland area.

Before presenting Russell with a Meg Heres watercolour painting of the cable suspension bridge, Board Chairman, Steve Mills and UGIC Chair, Chris Doyle thanked Russell for his outstanding contribution to the catchment and its community.

In responding Russell, acknowledged the enormous support that he had received from his family and the Board, the Implementation Committee the many Landcare Members and the community. He also thanked the Authority's staff, municipal and partner agency staff for their support.

Lilian Parker, who is currently the Environmental Services Manager for Murrumbidgee Irrigation Ltd, the second largest rural water authority in NSW, has been appointed to succeed Russell. Lilian and her family will be moving to the Yea area early in the new year.

## FOX goes to Water

Gary Fox has relinquished his role as Community Projects Manager, to take on the position of Waterways Works Supervisor in the upper Goulburn.

Gary has been with the Goulburn Broken CMA since last March and says he is very pleased to make the move to a 'hands on' outdoors position.

Gary lives in Yarck and will manage waterways projects in the Alexandra, Marysville, Mansfield and Jamieson area.

Experienced in land management through living his formative years on the family farm, Gary will bring a good deal of knowledge to the position and is looking forward to assisting landholders improve water management on and adjacent to their properties.



Contact Gary at the Yea office on

5797 2001 or

0427 509 960

## NEWS BREAK

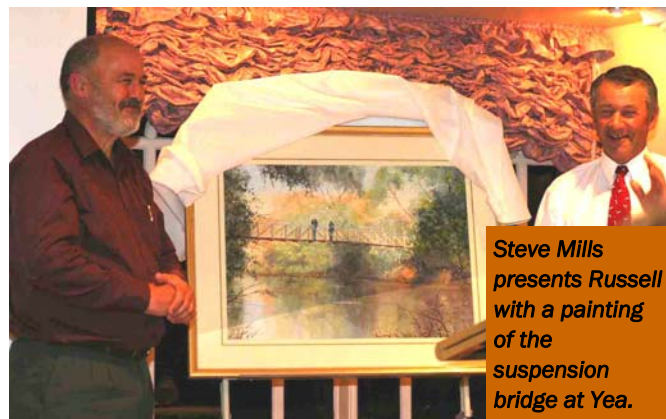
Your newsletter is now available in PDF format so all members of your group or organisation can receive it in colour.

If you have not already sent your primary email address please do so now so The Muster can be distributed throughout your membership or staff.

[popped@gbcma.vic.gov.au](mailto:popped@gbcma.vic.gov.au)

### IN THIS ISSUE

Wealands leaves	1
Directories	2
Biodiversity program	3
Art acquisition	3
Satellite imagery	4
Bush Returns	5
Wildlife Books	6



Steve Mills presents Russell with a painting of the suspension bridge at Yea.

## ANNUAL REPORTS AVAILABLE NOW

The Upper Goulburn Implementation Committee program reports for 2003-2004 are available on the Goulburn Broken CMA website and electronically as a PDF file.

You can access a copy by emailing [popped@gbcma.vic.gov.au](mailto:popped@gbcma.vic.gov.au) or logging on to [www.gbcma.vic.gov.au](http://www.gbcma.vic.gov.au)

The GBCMA Annual Report is also available on the web or by calling 5797 2001.

THE UPPER GOULBURN MUSTER

IS PREPARED FOR THE

UPPER GOULBURN IMPLEMENTATION COMMITTEE

EDITOR

POPPE M DAVIS

PHONE 5797 2001

SHOP 5, 10 HIGH STREET, YEA 3717

EMAIL: popped@gbcma.vic.gov.au

**FAQ**

*Get to Know...*

*Janette Curry—Waterways*

**Main job.** Waterway Vegetation Officer  
**How did you get involved with NRM.** Love for untamed bush land and time for a redirection in life.



**Favourite colour.** Red  
**Favourite food.** Fresh Barramundi

**Reading at the moment.** No time for that, except for vegetation manuals.

**Like listening to.** Rain on a tin roof.

**Best band/singer ever.** Bob Seger.

**How do you see the environment in 10 years time..** Compromised by population explosion and housing development.

**Where do you see yourself in 10 years time.** On long service, hopefully up north somewhere hot.

**Do you have a pet and what is its name.** Too many to mention, 2 dogs and the horses.

**Hobbies.** Horse riding and scuba diving.

**Ever been overseas.** Yes. **Where.** NZ and several Island Cruises.

**What is your favourite destination.** Broome

**Have you observed environmental issues we could learn from.** Exotic weed spread through native bush land.

**If you had the chance what would you do to make a difference.** Revegetate the barren hills of Alexandra.

**What do you think of our progress with natural resource management.** River health awareness in society is a big hurdle, times are changing but some people don't like change.

**Where will you holiday this year.** Lake Eildon with the new vintage speed boat.

**Do you support any sport.** Horse racing and football when time permits

**Where were you when terrorists hit the Twin Towers.** Kimberly's, Napier Range, swimming with freshwater crocs.

**Janette Curry has recently joined the Waterways Team in the upper Goulburn Catchment and is based at Yea.**

## Shires support Land Management Directories

Sustainable Land Management Directories have been published for the Shires of Mansfield and Murrindindi.

The booklets are a collaborative effort by the two Shires and the Upper Goulburn Landcare network with support from DPI and the Goulburn Broken CMA.

Editorial content includes valuable information for new landowners to assist them understand and gain assistance with environmental issues and the regulation of works on private land, who has

responsibility for permits and what permits are required.

Listings of local contractors are also included. These are not endorsed either by the Shires or the CMA but are included for guidance.

The booklets will be sent to every new landholder within both Shires and will be updated regularly to include new listings and changes to services, phone numbers etc. Published in convenient DL size it is envisaged that the books will be a 'must have' directory to keep near the phone.

## EnviroExpo next year

Following positive feedback from the 2003 inaugural *EnviroExpo* the Upper Goulburn Implementation Committee has given 'in principle' support for a bigger and more broad-based Expo next year.

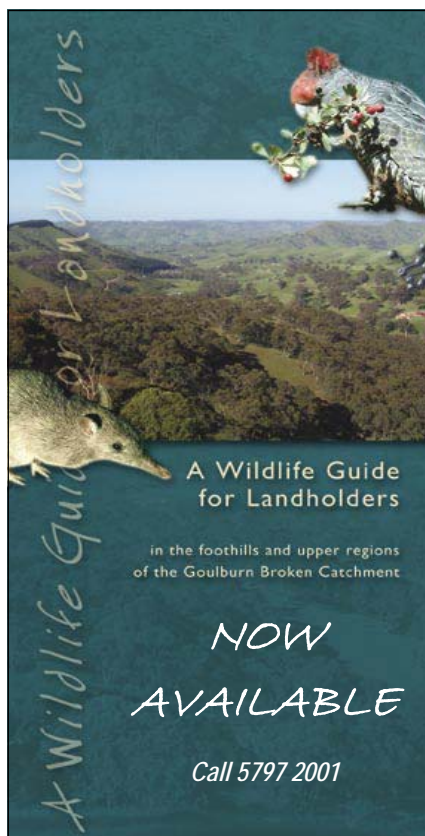
Held in the Goulburn Broken dryland the event will seek exhibitors from the public sector showing and demonstrating state of the art natural resource management technology. We will add another dimension to the mix by encouraging companies with environmentally sensitive agricultural and

domestic products to show and demonstrate the value of their range.

Exhibitors will not sell products from their stand but will be able to adequately demonstrate their qualities.

Look for future information on *EnviroExpo*. We plan to hold the event in July, when landholders have a reduced workload on the farm maximising the opportunity for visitors to attend.

**For information regarding exhibiting call Poppe Davis 5797 2001.**



## Paddock TREES



*Information brochure available on saving the grand sentinels of farm paddocks across the country.*

*Paddock trees are disappearing fast due to clearing for subdivision and natural attrition.*

*For your information brochure please contact the CMA on*

**5797 2001**

## UGIC meets in *Mansfield*

The Upper Goulburn Implementation Committee (UGIC) took the opportunity to meet with Councillors and staff from the Mansfield Shire at its final meeting for the year.

The UGIC has aligned its sub-catchment boundaries to match the Shire boundaries, to better enable a partnership approach to local natural resource issues throughout the upper Goulburn. The committee has members resident in each of the Shires within its area and believes this will assist in developing a strong partnership between the Goulburn Broken CMA and the Shires within its catchment boundary.

The meeting with representatives from Mansfield Shire was very successful, highlighting many points of common interest including sustainable water supply in proposed future subdivisions, weeds and community engagement.

Chief Executive Officer, Gary Gaffney agreed that there were benefits from aligning some decision making processes and timeframes to avoid double handling of information and to maximise available shared resources. It is also planned to engage an Environmental Officer in the future to oversee environmental strategies for Mansfield Shire. Mr Gaffney added that prior to beginning the new planning scheme deliberations all local Agencies and Authorities had been contacted for input.

UGIC has met previously with the Shires of Murrindindi and Mitchell with a similar view to building partnerships that will benefit natural resource management in the region.



*Get a better understanding of your soil and crop water requirements.*

Expressions of interest are called from landholders who may wish to participate in Irrigation Management Courses early in 2005.

*This is the last opportunity for landholders to participate in Water for Growth courses and attendance is mandatory for access to incentives for irrigation change.*

*Central pivot or K Line systems can make real cost savings, extra crop production and save water and are a real option to flood irrigation. Soil moisture monitoring equipment will also save water and cost.*

To register your interest for courses next year call:

**Martin: 5731 1233**

**Mob: 0409 521 303**

**Wendy: 5731 2106**

**E: [wendy.paglia@dse.vic.gov.au](mailto:wendy.paglia@dse.vic.gov.au)**

## *Art from the Heart of the Goulburn*

Together with the Shires of Mansfield, Mitchell and Murrindindi the Implementation Committee has recently acquired four artworks by local artists.

The pieces were part of an exhibition held at the Mechanics Institute in Tallarook by the Tallarook Arts Society (TartS).

As a major sponsor the Goulburn Broken CMA has purchased the artworks to form a travelling exhibition that will be shown in prominent positions in the upper Goulburn catchment throughout the next year. The pieces will rotate from one Shire to the next to enable communities to see them all.

The upper Goulburn catchment is a remarkable area of natural beauty and high environmental value—an evolving and changing landscape that evokes many responses and emotions from artists, residents and visitors. The catchment is home to many talented artists, using a variety of mediums and the collection shows the diversity of artistic ability we are fortunate to share.

The UGIC thanks the three Shires for participating in sponsorship of this

collection of works and hopes that it will be a catalyst for additional collaboration in future.



**Lynda Robinson**—crayon on sandpaper



**Caroline Lodwick**—watercolour



**Sandra Bowkett**—ceramics

**Exhibition organiser—Libby Webster (TartS)**

**Naomi White**—water colour on canvas



## Satellite imagery covers catchment

Aerial photos and satellite imagery are important tools to inform, plan and implement natural resource management programs or to engage our community.

For the first time, satellite imagery of the whole upper Goulburn catchment will be available for use by the Catchment Management Authority, the Department of Primary Industry, Local Government and Community Groups.

Imagery of the South West Goulburn catchment has been made available to the Landcare Coordinators who have been trained in how to use it with their Landcare Groups.

By Christmas 2004 imagery of the entire Mansfield, Murrindindi and Mitchell Shire areas will also be available, which will be an incredibly useful tool for planning, waterway works, salinity management and other land management programs.

*'Everybody loves to pour over maps and aerial images of their patch to see detail as well as the BIG picture'* Chris Doyle UGIC Chairman said. *"Our Landcare groups identified the need for this imagery nearly two years ago - and now, due to the support of the CMAs' Russell Wealands, we will be capable of delivering it."*

Russell has been working closely with staff from DSE (Ballarat) and the National Action Plan office to secure multiple user license imagery enabling areas of interest to be provided for access by community groups and several agencies. Russell said, *"The only area of the dryland where air photo images are yet to be acquired are in the Shire of Mansfield, and we will have those in hand by Christmas this year."*

Russell hopes that all interested parties in that area can join the CMA in a collaborative approach to acquire aerial imagery for a reasonable cost of around \$5000 to be shared between the Shires.

Landcare Groups will be able to view the images, measure distances and areas of interest using shareware that has been provided to them under license by the GBCMA.

Satellite imagery over the South West Goulburn catchment was also captured last April. This SPOT 5 imagery, and the spatial analysis of the red, green, blue and near infrared bands will be used to investigate salinity, water quality, vegetation, biodiversity

and river health issues.

For updated information on this new and exciting tool please contact the CMA office in Yea. Ph 5797 2001



*Yea and surrounds from the air.*

## New focus on local issues

Landcare and other environmental groups in the Mansfield area have met recently to formulate a working group aimed at focussing on environmental issues in the Shire.

Now called the Mansfield Land Management Group, this collective will pool resources and knowledge to identify environmental issues and seek various funding opportunities for natural resource projects in its area.

The group will comprise of delegates from local natural resources interest groups, Landcare Coordinators, Agencies and the Mansfield Shire, having a positive impact on the communities' ability to continue with its sustainable land management programs.



### Expressions of Interest Extended

The Goulburn Broken Catchment Management Authority (CMA) is trialling the new Bush Returns program, which offers landholders ongoing payments to manage large areas of land for regrowth and natural regeneration in the general Longwood and Violet Town districts.

*Here is a great opportunity to increase tree cover and get paid for it!*

Contact the CMA on 5761 1691 or visit the website:

[www.gbcma.vic.gov.au](http://www.gbcma.vic.gov.au)

for an information kit, including an expression of interest form. Forms should be returned to the CMA by

**December 21st. 2004**

to arrange an obligation free site visit.

### The 2005 Upper Goulburn Implementation Committee



Back L to R: David Ritchie, Mike Dalmau, Nigel Waterhouse (DSE), John Thompson, Chris Doyle (Chair), Greg Smith (G-MW).

Sitting L to R: Russell Wealands (retiring CMA) Neville Barwick, Margaret Hatton, Sally Abbott-Smith, Lillian Parker (Executive Officer).



# New Program Launched



The innovative Bush Returns program is underway in the area to the west of Euroa and Violet Town, where an official launch was recently conducted by Program manager Carla Miles.

The program seeks to encourage landholders to take part in a natural revegetation program that will create net benefits to the environment and a financial benefit to landholders.

Bush returns will bring about landscape change on a large scale, with enormous benefits for biodiversity and threatened species in the Goulburn Broken catchment.

The program has been widely promoted in local press in the target area and interested landholders are asked to submit an expression of interest for an 'obligation free' site visit. **Deadline for EOIs' is December 21st.**

There are plans to roll out the program in the upper Goulburn catchment in the future, pending availability of funding.

Contact 5797 2001 for information.



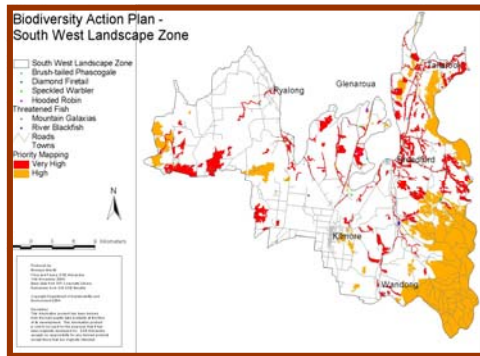
Carla Miles with (from left) Mick Williams (CMA Board), Landholders Margaret and Terry Martin, and Julie Flack ( Parks Victoria Ranger) at the Balmattum Conservation Reserve, near Violet Town.

## Biodiversity Update

Biodiversity Action Planning (BAP) is progressing in the upper Goulburn catchment.

BAP has produced some fantastic tools to assist extension officers, Landcare coordinators, landholders and anyone involved in planning and implementing biodiversity conservation activities.

BAP has produced two main products, the BAP maps and the BAP Zones Conservation Plans, which will be of great use to extension officers in planning where biodiversity conservation activities should be targeted, the types of activities required, the importance of the activity and a explanation of why the work is important (e.g. providing or enhancing habitat for threatened species in that area.) Over the next year several activities will be implemented to encourage the use of BAP in extension across the upper Goulburn Region. First, a BAP information session targeting people involved with Biodiversity Conservation was held on the 23<sup>rd</sup> of November in Benalla. This information session provided interested people with the information they require to use the tools developed by BAP.



Biodiversity mapping well advanced.

Extension staff will soon have access to the BAP maps, which can be produced in a number of ways showing different biodiversity assets. These maps can be used in conjunction with existing Departmental corporate GIS layers or printed for people without access to corporate layers.

It is hoped that BAP will help to ensure that high value biodiversity assets are protected in the Goulburn Broken Dryland and assist in raising the awareness of the importance of protecting and enhancing high value biodiversity assets throughout the catchment.

## From the Chairman

*(Excerpt from the Annual Report)*

Following its annual internal review and feedback obtained through the highly valued annual round table discussions with Landcare Groups and its community, the UGIC is now managing delivery of its programs and community engagement processes through 3 sub-catchment based programs – each of which closely align with its 3 municipal districts. The benefits of this initiative have become immediately obvious through greater participation and interest in the GBCMA, its Regional Catchment Strategy and integrated program delivery. Recent examples of this have been the informative Weeds Forums which have informed local communities of their obligations, the strategic approach being taken to weed management, identified the DPI resources (enforcement and extension staff) and incentives available through their local Landcare Groups to tackle the issue.

Regrettably, delivery on a promise of a more efficient, timely and effective Investment Planning process has yet to eventuate. Enabling legislation in 1997 charged Implementation Committees with the responsibility to engage the community to develop local strategies and implement on ground works programs that achieve the RCS goals. Considerable thought, time and effort has been put in by the UGIC and its CMA support staff to ensure the most cost effective means of delivering, monitoring, evaluating and reporting on the numerous integrated programs. These have been carefully developed through practical application so they are meaningful and useful to management, the community we serve, Implementation Committees, the CMA Board and, we believe, our Funding bodies - State and Federal Governments.

On behalf of the Implementation Committee and the CMA staff I wish you a very happy Christmas and a productive year in 2005.

Chris Doyle  
Upper Goulburn Implementation Committee



Lilian Parker—moves to Yea to take up new position with the CMA..

**WELCOME**

The Upper Goulburn Implementation Committee welcomes Lilian Parker to the position of Executive Officer in the upper Goulburn catchment.

Lilian comes to us from Murrumbidgee Irrigation Pty Ltd where she has held the position of Environmental Services Manager for 10 Years. Lilian has lead the successful development and implementation of the MIA&Ds Community Land and Water Management Plan, now known as MIA EnviroWise. This plan was developed over a number of years by the community and agencies and recently Murrumbidgee Irrigation have become the custodian and implementer of the plan. The project is a major component of the Murrumbidgee Catchment Blueprint. Lilian has a Bachelor of Science in Australian Environmental Studies, Griffith University, QLD and a Graduate Diploma of Arts (Library and Information Science), Charles Sturt University, NSW

## Wildlife Booklet Launched at Mt Piper

The long awaited Wildlife Guide for Landholders in the upper Goulburn catchment was launched by CMA Board Member Ailsa Fox last month.

It is the second in a series, the first being a similar publication for the plains and Box-Ironbark region of the Goulburn Broken catchment.

Mrs Fox said the booklet will be invaluable for assisting to identify native animals and birds throughout the foothills and upper regions of the catchment, and will not only be used by people on the land but will also be a valuable tool for schools and people simply interested in the wildlife around them.

Many people contributed to the development of the book including Steve Smith DSE Alexandra, Kate Stothers and Debbie Colburne from DPI Benalla.

The booklet has been published in a convenient DL format suitable for carrying in the glove box and is available from the CMA office in Yea and DPI offices in Mansfield, Benalla, Alexandra, Broadford and Seymour.

For further information please call 5797 2001.



Steve Smith speaks about the importance of the wildlife booklet as a reference tool.

## Whole Farm Planning

Approximately 60 property owners have participated in Whole Farm Planning courses this year in the upper Goulburn.

Three courses have been conducted in the Broadford area by Cate Culley from the Department of Primary Industries, and Cate reports that there is a common re-occurring theme from landowners. Most people already have a very good idea what they would like to do with their property but simply don't know where to start.

Cate says that after a Whole Farm Planning Course, landowners have developed a plan and in most cases refined their original idea to encompass environmental benefits as well as increasing productivity.

"Where to start is the most common question" Cate says. "We are able to assist landowners to understand the importance of planning in the whole process and take away a lot of the unknown quantities that can creep into a property plan that has not been well thought out."

Courses will be available in 2005 and location will depend on local community support for the Whole Farm Planning process.

Call Cate Culley on 5784 0600.

*Has your Group had a change of Executive members recently? Please let us know so you don't miss out on all the catchment news.*

Call 5797 2001 or email  
[popped@gbcma.vic.gov.au](mailto:popped@gbcma.vic.gov.au)



Russell Wealands (CMA), John Thompson (UGIC), Ben Hardman (Member for Seymour), Ailsa Fox (CMA Board), Steve Smith (DSE), Mike Dalmau (Shire of Murrindindi) at the launch.

## Community Salinity Grants

This years successful Community Salinity Grants netted more than \$15,000 in local project funding.

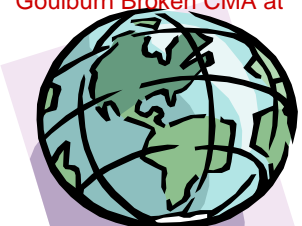
From a whole of catchment total of \$126,179 in funding applications, the upper Goulburn applications totalled \$29,000 and after assessment approvals amounted to just over 50% success rate. This years projects are interesting and innovative and this is a very good result.

Final announcements will be made to applicants before Christmas.

**The GBCMA website is under constant renewal**

Use our site to link with other environmental sites and Landcare Groups.

Goulburn Broken CMA at



[www.gbcma.vic.gov.au](http://www.gbcma.vic.gov.au)

## Website updates—call for information

Some time ago we offered Landcare groups the opportunity to place a Home Page on our website and take advantage of our links with other natural resources managers.

Response has been rather thin and since our own site has just undergone a major face –lift we are offering the opportunity again.

Landcare groups can put as much or as little as they see fit in their web page but there are some items that definitely should be there.

For example your group name, the area you service and how often you meet. Also how to become a member, what your main

environmental issues are and your contact details.

We have previously sent out a pro-forma to capture these details, however there is another sheet enclosed with your newsletter in case the original has gone astray.

Please take this opportunity to create a link with the rest of the Landcare movement. Your Group will also have access to constant updates from many other Groups and natural resources agencies.

There is no charge for this link. It is as simple as giving us the information and advising of any personnel changes.

For further information contact:

[popped@gbcma.vic.gov.au](mailto:popped@gbcma.vic.gov.au)

**Remember your newsletter is now available in PDF format so all your members can access the news and information.**