

Woodlands and Wildlife

Newsletter of the Mid Goulburn Broken Implementation Committee

June 2008

Vol.7. Number 2

Towards a Dryland Landscape Strategy

A fresh strategy to protect and enhance the landscape in the dryland (upper Goulburn and mid Goulburn Broken catchments) is being prepared by the Goulburn Broken Catchment Management Authority (CMA).

When completed, the strategy will form a blueprint for care and oversight of this valuable part of the Goulburn Broken catchment for years to come.

The Mid Goulburn Broken Implementation Committee has responsibility for community consultation in formation of the strategic plan and is seeking opportunities to attend meetings of community groups throughout the mid Goulburn Broken region to explain the project and receive feedback on how the dryland should and could look up to 50 years into the future.



Moodies Swamp.

MGBIC members will show a short presentation to highlight some characteristics of the catchment before and after remedial works and with a view towards the future. The presentation will highlight some of the drivers for change in



Private land in the Strathbogies.

the catchment and the presenter will seek input from community members on how they see our catchment now and in the future.

There is no doubt that climate will play a huge role in how our landscape changes, but there are many other variations that will take place through social and economic adjustments, some which are beyond our immediate control.

MGBIC members are contacting peak

groups within their area to seek opportunities for discussion and will also ask group members to complete a short survey on how they view their landscape now and what changes they anticipate in the next 20 years.

This consultation process is an opportunity for people to contribute to a strategy that will form the basis of how we manage the dryland landscape into the next 50 years and will also highlight where funding is likely to be targeted.

For more information please contact Tony Kubeil at the GB CMA office in Benalla on 5761 1611.



Erosion gully in farmland.

INSIDE THIS ISSUE:

Landscape in Focus	1
Tipping point for climate	2
Farewell Lilian	2
Awards & Rewards	3
Bogs protection	3
State Park gets help	4

2008 the AWARDS continue

The Mid Goulburn Broken Implementation Committee has agreed to continue the Landcare Groups Award this year following the success of the 2007 Group Award. The Landcare Award for Excellence and the Landcare Group Award will be continued, with presentations at the Annual MGBIC dinner on Wednesday September 17th, Benalla Art Gallery. Nominations and application forms have been included with this newsletter and the deadline for application returns is August 22nd. Additional nomination forms from the Benalla Yea office P 5761 1611.

Woodlands and Wildlife

IS PREPARED FOR THE

Mid Goulburn Broken

Implementation Committee.

EDITOR: POPPE M DAVIS

PHONE 5736 0108

SHOP 5, 10 HIGH STREET, YEA 3717

Email: popped@gbcma.vic.gov.au

Website: www.gbcma.vic.gov.au

**Goulburn Broken
Regional Land-
care Coordinator
& IC Coordinator
Tony Kubeil
P 5761 1611**



Q & A

Q. What is the Dryland?

A. Rain fed land use. Land outside designated irrigation areas under the Water Act.

Movement at the Station

The Upper Goulburn Executive Officer, Lilian Parker, resigned from the GB CMA last month to take up a position with the Glenelg Hopkins CMA in Warrnambool.



Lilian was with the Upper Goulburn Implementation Committee for 3 years and had oversight of the two dryland Implementation Committees, including the Mid Goulburn Broken IC, for the past year.

Lilian said she was eager to learn more about coastal management and broaden her experience with other environmental issues.

She will be missed throughout the CMA family, and all her friends and colleagues wish her well in the new position.

www.ghcma.vic.gov.au

Climate Change—Are we approaching tipping point?

Courtesy Banksia Environmental Foundation

The world could be tracking towards irreversible climate change as warming takes place much quicker than previously thought, an Adelaide academic has warned.

Climate change expert Barry Brook, of Adelaide University, told a Canberra conference — Imagining the Real Life on a Greenhouse Earth — atmospheric carbon dioxide levels were headed towards 600 parts a million, and forecast global temperature increases of up to six degrees.

Professor Brook said a global temperature increase of three degrees might result in the collapse of the Amazon rainforest, a four-degree increase would lead to the displacement of hundreds of million of people and the extinction of up to half the world's species, and a five-degree increase would create an ice-free planet and sea-level increases of 80 metres.

"We're seeing events predicted for the end of the 21st century happening already," Professor Brook said.

He cautioned that even the most ambitious international greenhouse

gas reduction targets might not prevent a catastrophic increase in temperatures.

"Two degrees has the potential to lead to three or four degrees because of carbon-cycle feedbacks," Professor Brook said.

The Australian National University's Janette Lindesay warned that the earth was moving towards "tipping points", where climate change would become irreversible.

Barrie Pittock, of the CSIRO, said the amount of carbon dioxide going into the atmosphere had overtaken even the worst-case scenario included in last year's bench-mark report by the Intergovernmental Panel on Climate Change.

"We are at or exceeding the fossil-fuel-intensive scenario, which the latest IPCC report didn't cover because they thought it was too much," Dr Pittock said.

He listed nine reasons for the faster-than-expected increase in greenhouse gas emissions, including the rapid growth of China and India.

He said global temperatures, rising sea levels, polar ice reduction and rainfall changes were all happening much faster than previously predicted. *The Age June 2.*

Weeds Booklet updated

The much loved Weeds of the Goulburn Broken booklet has been re-printed and is now available at CMA offices throughout the Goulburn Broken catchment.

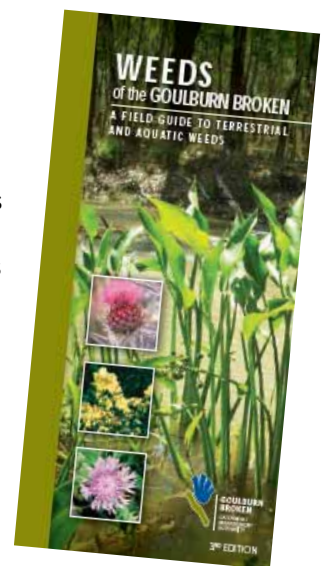
Plans to launch the 3rd Edition of this popular reference book are underway.

First and second editions were so popular that they were snapped up very quickly, but the new edition also contains information on aquatic weeds, which were missing in the earlier versions.

A collaborative effort between the Department of Primary Industries, Goulburn Murray Water, the Goulburn Broken CMA, Department of Sustainability and Environment, North Central CMA and other contributors, the new edition is already in high demand.

Everything is covered, from thistles to grasses and water hyacinth, plus many plants that were once thought to be suitable for gardens and parks.

Check the book; some garden plants are now considered weeds and need to be controlled even in urban gardens.



For your copy of the Weeds of the Goulburn Broken contact Tony Kubeil P 5761 1611.

Awards and Rewards back in the Frame



The Mid Goulburn Broken Awards will be held again this year with a dinner to celebrate the achievements of individuals and Landcare Groups in the upper Goulburn catchment.

The Group Award was originally offered to celebrate 10 years of CMA's in Victoria and the MGBIC has decided to offer it again due to its success.

Once again the Mid Goulburn Broken Implementation Committee will offer the Landcare Award for Excellence, and the Landcare Group Achievement Award.

Awards will be presented at the Mid Goulburn Broken Presentation dinner at the Benalla Art Gallery on Wednesday September 17th 2008.

The Landcare Award for Excellence is awarded to an individual committee member who has shown exceptional dedication to the Group, and Groups will be asked to produce a short film or poster option to demonstrate their most significant project in the past 10 years.

Application and nomination forms are available electronically from the Yea and Benalla offices on 5736 0100 or 5761 1611 and by emailing chrisb@gbcma.vic.gov.au

Look for these brochures on the CMA website or call in to a CMA office in for a hard copy.

DEP Protection for Bogs and Creek

Almost eight kilometres of fencing has been erected to protect perched bogs and remnant vegetation near Polly McQuins' weir.

The work was carried out by members of the Drought Employment Program (DEP) managed by the Goulburn Broken Catchment Management Authority (CMA).

The fencing program will keep stock off sensitive bog's areas, and out of nearby Surveyors Creek and Seven Creek's improving water quality and overall habitat for threaten species. The landowners have been fully supportive of the works on their property, and high quality fencing has been used for the project to ensure that the area remains protected without the need for constant maintenance.

"We expect this fence to last for many years" said Geoff Brennan, CMA Works Manager. "These bogs and special remnant sites will spring back to life once the

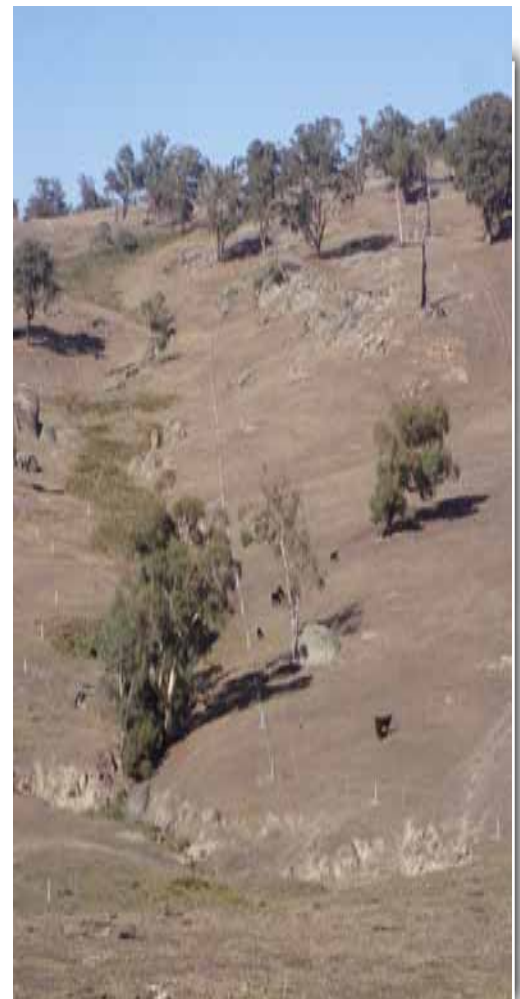
stock can no longer graze them and pug up the ground".

In total 30.6. Ha has been protected and while some controlled grazing will be allowed it is anticipated that native species will regenerate naturally in the fenced area.

Having DEP crews available to facilitate the fencing has meant that more work can be completed in a shorter timeframe.

The Drought Employment Program offers full time employment, for the length of the program, to farmers and farm workers who have been suffering long term effects of drought conditions. Participants are trained in chemical handling, chain saw use and other skills to meet occupational health and safety requirements.

Sensitive bogs and remnant vegetation will be protected by the DEP fencing project on the Strathbogie Ranges near Polly McQuins Weir.



No Kill Pasture Cropping—Workshop

A two day Advanced Pasture Cropping/ No Kill workshop was held at Doug James' property at Bungeet in early March, 2008.

This workshop was attended by 20 very enthusiastic local farmers who listened, questioned and challenged the two presenters from Wellington, N.S.W.

Pasture Cropping is a system that incorporates the sowing of a winter active (C3) annual crop i.e. oats, wheat into a summer active (C4) perennial pasture base, in conjunction with time controlled grazing techniques.

This system forms a sustainable cropping/grazing regime that reduces fertilizer and herbicide inputs while re-invigorating native grasses in pastures.

All who attended this workshop found it valuable and many of the participants have put what they have learned into practice, with over 250 ha under the Pasture Cropping regime in the Devenish district alone.

The forum capitalized on interest generated at the 'Doing it Differently' forum in Glenrowan last November.



Active participation in discussion.



Paying attention.

State Park gets New Life

The Broken Boosey State Park is now totally stock free thanks to the Broken Boosey Conservation Management Network, staff from the waterways program at the Goulburn Broken CMA and the GBCMA's Drought Employment Program crews.

Incentives valued at more than \$300,000 have been provided by the



GBCMA to landholders with properties adjoining the Broken Boosey State Park since it was proclaimed in 2002.

More than 50 landholders have completed grants issued by the GBCMA to erect almost 54 kilometres of fencing to protect around 412 hectares of remnant vegetation within the State Park. Incentives for off stream water were also provided to landholders who had previously relied on the Creek as a source of water for their stock.

Left: Boosey Creek now protected from stock.

For information on the Broken Boosey Conservation Management Network, contact Jim Castles at Shepparton on P 5820 1100.

From the National Landcare Facilitator

Awards & Training

Nuffield Australia 2008 Scholarships for Australian Primary Producers

The objective of Nuffield Scholarships is to increase practical farming knowledge, management skills and general techniques.

Applications close 30 June. Visit www.nuffield.com.au

2008 Agricultural Industries Young Innovators and Scientists Awards

The Science Awards are open to people aged 18 to 35 years who are working or studying in the agriculture, fisheries, forestry, food or natural resource industries.

Applications close 30 June. Visit www.brs.gov.au/scienceawards

Tree Day competition

The Australian Landcare magazine is holding a Tree Day competition to find out how much people in landcare know about the roles trees play in our environment. Seven multiple choice questions are in a survey on page 22 of the June edition of the Australian Farm Journal's Australian Landcare magazine. Answers can be emailed **by no later than 1 July** to magazine@landcareaustralia.com.au

For updates on other Landcare events and funding calls please log on to:

national@landcarefacilitator.com.au

