

## Implementation Committee Regional Summaries

### Shepparton Irrigation Region

#### 2005/06 Outputs Summary

- Due to staff vacancies during the data collection period only 60% of Landcare groups (21 out of 37) submitted full annual records. However this data alone showed that:
- SIR Landcare groups cover >430,000ha, and have more than 516 members and 20 member families.
  - 41% groups rated their group health highly, whereas 59% rated their group status as "hanging in there"; 3 groups are in recess.
  - 121 meetings, 13 field days, and 46 field activities were run with 3711 participants, and 58 guest speakers.
  - 13,960 trees were planted, and around 50ha of weeds treated.
  - \$136,000 grant funding was received, with total in-kind labour contributions of \$304,000, at a ratio of 1:2.24.

#### Highlights

- Achievements nominated by Landcare groups for the year included:
- Management of local reserves (several groups).
  - National Tree Day Plantings (1700 trees, 7 sites).
  - 360km roadsides mapped for Chilean Needle Grass.
  - Clean-up Australia Day events (5 groups).
  - Myuna Annual Schools Salinity Tour educating 400 children on salinity and groundwater management.
  - 2006 Annual SIR Landcare Bus Tour, visiting Landcare projects between Kinglake to Wilsons Prom.

### Mid Goulburn Broken Region

#### 2005/06 Outputs Summary

- 52% of Landcare groups (11 out of 21) submitted annual records, which showed that from these groups alone:
- Mid Goulburn Broken Landcare groups and networks cover >75,000ha, and have more than 650 members.
  - 70% groups rated their group health highly, whereas 8% rated their group status as "hanging in there"; Only 1 group expected their health to decline in 2006/07.
  - 60 meetings, 13 field days, and 21 projects were run involving 1800 participants, and 64 guest speakers.
  - 5,200 trees were planted, 1805ha weeds controlled, and 2100ha treated for pest animals.
  - \$326,000 grant funding was received, with total in-kind labour contributions of \$409,500, at a ratio of 1:1.25.

#### Highlights

- Achievements nominated by Landcare groups for the year included:
- Integrated rabbit management programs.
  - Rail trail revegetation and rehabilitation project.
  - Working partnerships with CFA (several groups).
  - Established and running FarmTABLE discussion group.
  - Upton Landcare Learning Centre established at Avenel Maze.
  - Management of weed spread from grain distribution and import.
  - Members properties established as biological control nursery sites for Paterson's Curse.
  - Nearing end of 5yr "Battling Burnt Creek Blues" Patersons Curse community education and control project.

### Upper Goulburn Region

#### 2005/06 Outputs Summary

- 75% of Landcare groups (21 out of 28) submitted annual records, which showed that from these groups/networks:
- Upper Goulburn Landcare groups and networks cover >250,000ha, with more than 390 Landcare members plus 57 member Landcare families.
  - 2 new groups formed, 1 group came out of recess, and 3 groups remained in recess.
  - 70% groups rated their group health highly, whereas 8% rated their group status as "hanging in there"; 108 meetings, 45 field days, and 45 projects were run involving 3,600 participants, and 100 guest speakers.
  - 42,560 trees were planted, 1445ha weeds controlled, and 60,000ha treated for pest animals.
  - \$356,000 grant funding was received, with total in-kind labour contributions of \$536,000, at a ratio of 1:1.5.

#### Highlights

- Achievements noted by Landcare groups for the year were:
- Big Tree Competition.
  - Themed community and farm information walks.
  - Bird and Macquarie Perch surveys / talks.
  - Farm safety and tree identification field days.
  - Collaborative projects with CFA, schools and scouts.
  - Pest animal control projects with Hughes Creek Catchment Collaborative and Yea River.
  - Collective landholder weed spraying projects.
  - On-going revegetation of public and private land.

## Strategic Outcomes 2005/06

Welcome to the first Goulburn Broken Landcare Annual Report Card. This summarises Landcare contributions to catchment NRM issues in 2005/06. It is based on quarterly Landcare staff reports and annual group records provided by ~70% of the groups. It therefore gives only an insight into Landcare efforts for the year, and doesn't include Landcare work by LAP groups, or all CMA funded Landcare projects.

### Highlights

- 90 Landcare groups (6 groups in recess, 2 new groups).
- 60% groups rated their group health highly, while 15% were just hanging on. Only 1 group felt they'd decline in 06/07.
- 289 Meetings, 132 Field Days, and 112 on-ground projects were delivered.
- 115,000 Trees were planted, 5020ha of weeds controlled, and 62,100ha treated for pest animals (rabbits and foxes).
- 63 media articles printed, and 23 radio/TV interviews held.
- 9,111 participants (not all Landcare members) donated over 33,000 in-kind hrs and \$1.21million of in-kind labour.
- \$2 million grant funding was sought, with \$1.2 million received.
- 71% funds received were via the CMA Investment Plan, and 29% Envirofund, National Landcare Program, or other.
- Landcare activities addressed NRM issues including foxes, rabbits, weeds, revegetation, threatened species, soil health, water quality, wetlands, roadside management and litter.

### Regional Catchment Strategy (RCS) Targets

In 2005/06 Goulburn Broken Landcare activities have contributed to the following RCS Management Action Targets:

- Manage weed invasions in riparian and in-stream areas.
- Addressing terrestrial riparian habitat loss (revegetation).
- Develop and implement Local Area Plans in riverine plains.
- Adapt farming systems to changed conditions.
- Increase level of community weed/rabbit responsibility.
- Integrate weed/rabbit control with other NRM programs.
- Plant, seed or regenerate 8000ha of native vegetation.
- Implement Threatened Species Action and Recovery Plans.

### Community Landcare Support Strategy

In 2005 the Goulburn Broken Region launched a 5-year Landcare Support Strategy in line with the Victorian Action Plan for Second Generation Landcare (VAPSGL).

### CLSS Targets

Of the 6 key target areas 3 were addressed in 2005/06:

- Increase media profile
- Increase signage of Landcare
- Increase provision of Landcare support staff training

### CLSS Actions

Major strategy actions implemented in 2005/06 included:

- Develop and encourage local government partnerships with Landcare (Land Management Directories, various joint projects).
- Identify opportunities for increased Landcare involvement in projects (working with CMA and Waterwatch programs).
- Support / expand Landcare in schools (ASISTM project).
- Develop and produce Landcare promotional material (stickers and signage).
- Recognise Landcare volunteer accomplishments (Awards).
- Collect and document Landcare stories (Landcare Forum).
- Identify / promote funding opportunities (Qtrly Newsletter).
- Knowledge sharing between all stakeholders (Various).

On-going CLSS Strategy Actions undertaken in 2005/06 were:

- Provide access to admin and coordination support.
- Continue to seek funding for Landcare support roles.
- Provide regular networking for Landcare support staff.

For further information contact:

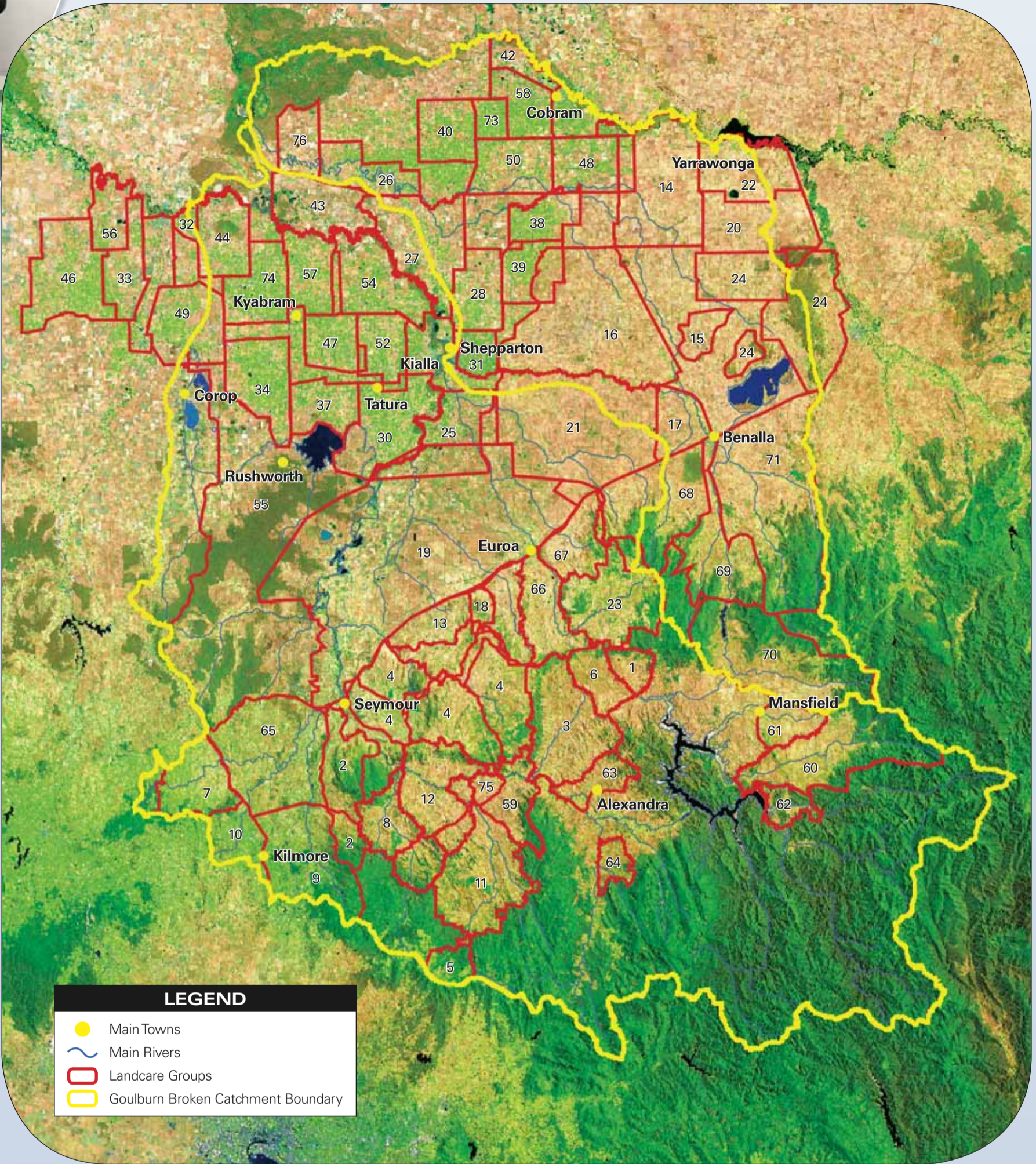
**Regional Landcare Coordinator, Goulburn Broken CMA**  
Shop 5 / 10 High St, Yea VIC 3717  
Ph: (03) 5736 0100  
[www.landcarevic.net.au/goulburnbroken](http://www.landcarevic.net.au/goulburnbroken)



Goulburn Broken Landcare  
Annual Performance Story

2005/06

# Goulburn Broken Landcare



Label	Group Name	Group Area (Ha)	Meetings (No.)	Field Days (No.)	Field Activities (No.)	Total participants	In kind hours	In kind value
<b>Upper Goulburn Region</b>								
1	Ancona Valley	11000	6	1	0	111	255	\$8,390
2	Dabyminga Catchment Cooperative	21048	7	1	9	361	1294	\$14,070
3	Home Creek Spring Creek	20000	6	6	3	477	2654	\$33,700
4	Hughes Creek Catchment Collaborative	12000	29	9	2	671	2078	\$58,870
5	Kinglake	20000	12	3	12	346	938	\$21,250
6	Merton	10430	5	2	2	102	269	\$6,420
7	Nulla Vale Pyalong West	17934	7	2	4	273	960	\$16,450
8	Strath Creek	25000	5	4	5	326	1026	\$22,150
9	Sunday Creek Dry Creek	31615	7	2	3	259	291	\$10,180
10	Willowmavin	11836	11	1	0	126	391	\$8,020
11	Yea River Catchment	50000	8	7	4	390	3619	\$41,710
12	Yellow Creek Dairy Creek	15000	3	3	1	135	481	\$23,640
59	Molesworth	IN RECESS						
60	Debatte	DATA NOT AVAILABLE						
61	Fords Creek	IN RECESS						
62	Howqua Valley	DATA NOT AVAILABLE						
63	Ultima-Thule (UT) Creek	DATA NOT AVAILABLE						
64	Cerberus Creek Action Group	DATA NOT AVAILABLE						
65	Glennaroua Land Management Group	DATA NOT AVAILABLE						
75	East Killingsworth	IN RECESS						
<b>Mid Goulburn Region</b>								
13	Burnt Creek	16,500	6	5	2	388	2306	\$46,660
14	Burramine Tungamah	N/A	7	2	2	67	98	\$20,455
15	Devenish Gooramab	N/A	0	0	0	0	0	\$0
16	Dookie Land Management Group	73125	4	3	0	51	104	\$2,530
17	Goomallibee	N/A	7	2	0	69	158	\$4,060
18	Longwood East	N/A	6	2	132	342	\$7,000	
19	Nagambie	N/A	4	2	2	180	583	\$15,382
20	Peechelba Boomahmoonah Wilby	2,800	0	0	0	0	0	\$0
21	Sheep Pen Creek Land Management Group	DATA NOT AVAILABLE						
22	South Yarrowonga	5,000	4	1	1	225	376	\$22,565
23	Strathboggy Tableland	50,000	11	4	4	192	796	\$18,080
24	Warby Ranges	N/A	11	4	1	469	1540	\$31,160
26	Gooram Valley	DATA NOT AVAILABLE						
67	Balmattam / Sheans Creek	DATA NOT AVAILABLE						
68	Warrenbayne Boho Land Protection Group	DATA NOT AVAILABLE						
69	Swanpool District Land Protection Group	DATA NOT AVAILABLE						
70	Upper Broken Land Management Group	DATA NOT AVAILABLE						
71	Mollyjah-Tatong Land Protection Group	DATA NOT AVAILABLE						

Label	Group Name	Group Area (Ha)	Meetings (No.)	Field Days (No.)	Field Activities (No.)	Total participants	In kind hours	In kind value	
<b>Shepparton Irrigation Region</b>									
25	Arcadia & District	23026	36		1	112	374	\$7,540	
26	Broken Creek Improvement	14675	64		0	64	96	\$1,920	
27	Bunbartha Kaarimba	30650	45		3	101	167	\$11,230	
28	Congupna Tallygaroopna	15487	120		3	154	420	\$8,400	
29	Corop Community Action Group	N/A	144		1	150	63	\$5,195	
30	Dhurringile & District	28767	48		7	171	546	\$13,480	
31	East Shepparton	7369	0		0	0	0	\$0	
32	Echuca Urban	DATA NOT AVAILABLE							
33	Echuca West Salinity and Landcare Group	13618	4		1	9	36	\$720	
34	Gigarra Stanhope	N/A	22		0	24	29	\$780	
35	Goulburn Murray Landcare Network	300000	136	4	10	1377	2793	\$56,876	
36	Goulburn Valley Environmental Group	300000	59		3	113	305	\$7,720	
37	Harston Community	DATA NOT AVAILABLE							
38	Invergordon	11460	30		1	40	149	\$2,980	
39	Katandra West	DATA NOT AVAILABLE							
40	Katunga	DATA NOT AVAILABLE							
41	Kiaia Lakes Residential	N/A	75		1	104	243	\$5,020	
42	Koonoomoo	7220	IN RECESS						
43	Kotupna	DATA NOT AVAILABLE							
44	Koyuga-Kanyapella (in recess)	16748	0		1	30	120	\$2,400	
45	Kyabram Urban	DATA NOT AVAILABLE							
46	Lockington & District	28414	12		2	108	234	\$5,040	
47	Merrigum	DATA NOT AVAILABLE							
48	Muckatah	18545	108		6	150	316	\$7,220	
49	Nanneella Timmering	DATA NOT AVAILABLE							
50	Naringaningabook	17766	108		3	319	1226	\$64,635	
51	Nathalia Tree Group	DATA NOT AVAILABLE							
52	North West Mooroopna Land Management Group	13704	84		1	143	341	\$6,980	
53	Tatura Urban	N/A	6		2	18	60	\$1,200	
54	Undera	14400	36		0	36	57	\$1,160	
55	Waranga Land Protection Group	DATA NOT AVAILABLE							
56	Wharfedale West Land Management Group	DATA NOT AVAILABLE							
57	Wyuna	14808	90		2	546	4013	\$82,975	
58	Yarroweyah Watertable Management Group	IN RECESS							
73	Floridan Park	DATA NOT AVAILABLE							
74	Tongala	DATA NOT AVAILABLE							
76	Picola Land Management Group	DATA NOT AVAILABLE							