

Red Gum Wetland

Endangered in the Goulburn Broken Catchment

81% of Red Gum Wetlands have been cleared. 47% of what remains is on private land.

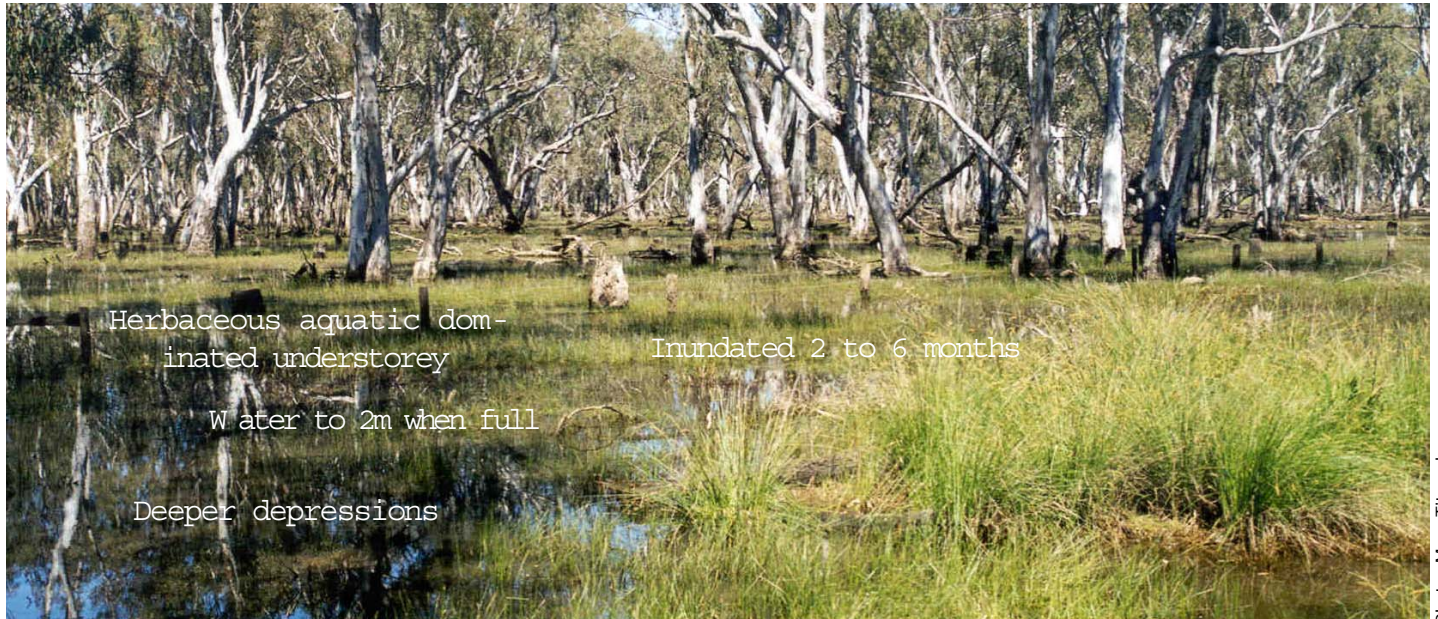


Figure 1. A healthy example of Red Gum Wetland. Photograph was taken in November.



Figure 2. A healthy example of Red Gum Wetland.



Figure 3. A healthy example of Red Gum Wetland in June.

Red Gum Wetland

Endangered in the Goulburn Broken Catchment

Description

These shallow wetlands occur on the alluvial plain in deeper depressions of shallow drainage lines or prior stream meanders, where annual rainfall is generally less than 700mm. Inundation occurs when there is sufficient run-off to create a flow along these depressions. Inundation may last 2 to 6 months, and the wetlands may be dry at the start of winter.

Typically, the floristic composition of the woodland varies according to water depth and time of year.

Aquatic species include Narrow-leaf Nardoo and Common Nardoo, Pacific Azolla, Common Spike Sedge, Tall Spike-sedge, Floating Pondweed and Water-ribbons. As the wetland dries, a range of grasses and herbs grow, including Common Blown Grass, Tufted Burr-daisy, Couch, Poison Lobelia and Austral Brooklime.

Rushes include: Hollow Rush, Joint-leaf Rush and Finger Rush. Associated species may include Cumbungi and Common Reed.

Species To Look For

Flora: Water-shield.

Fauna: Royal Spoonbill and breeding sites for water birds including the Australian White and Straw-necked Ibis, Australasian Bittern (e), Great Egret (v), Hardhead (v).



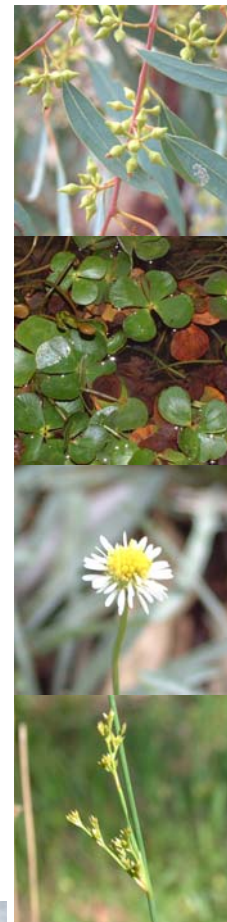
Figure 4. Hardhead
Photo: DSE/McCann



Figure 5. Australian White Ibis
Photo: DSE/McCann



Figure 6. Australasian Bittern
Photo: DSE/Peter Menkhorst



Figures 7-10. River Red Gum, Common Nardoo, Tufted Burr-daisy, Joint-leaf Rush.

Photos: 7, 9 and 10: Mary Titcumb, 8: Sally Timmins.

Why Red Gum Wetlands are Threatened

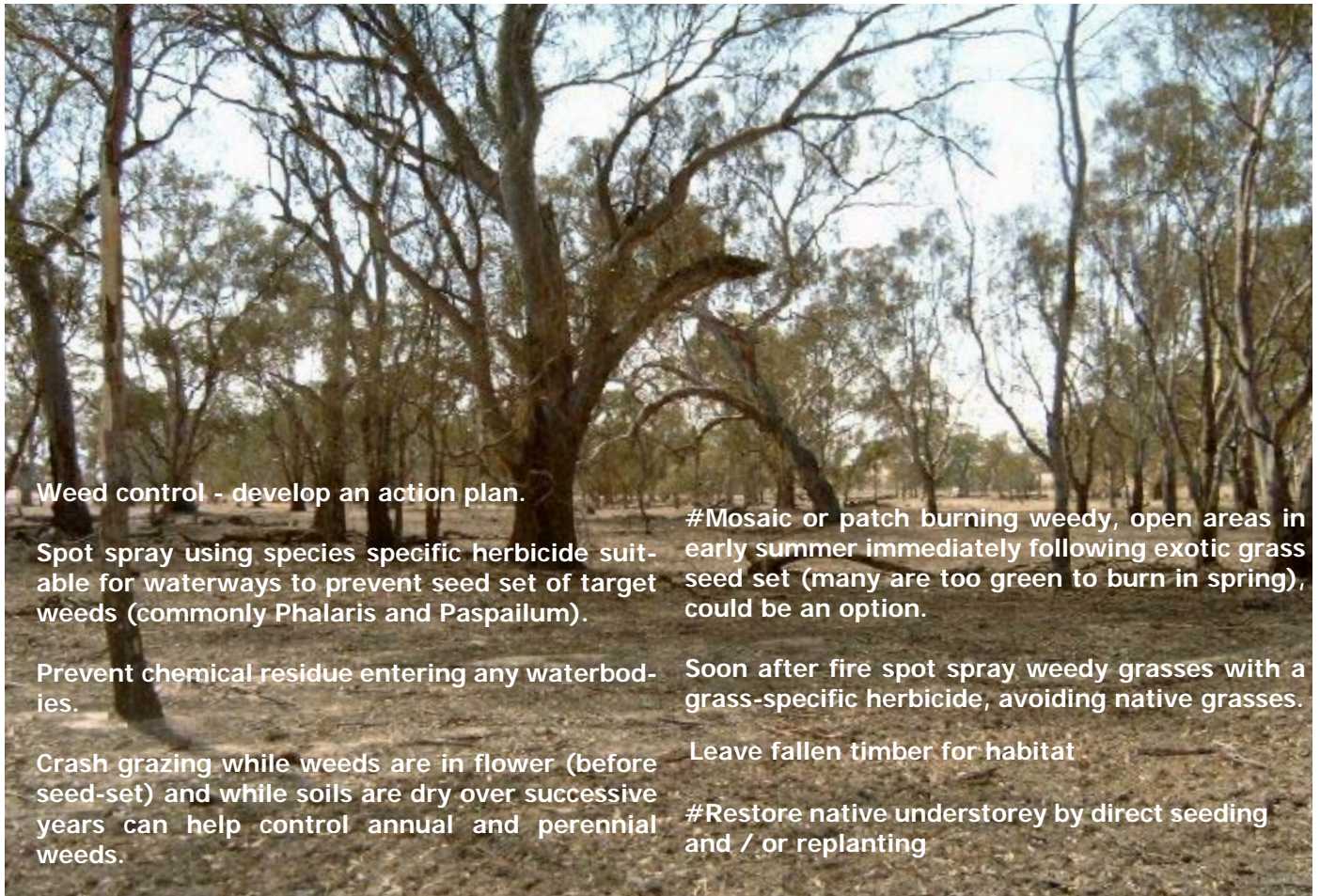
More than 81% of Red Gum Wetlands in the Goulburn Broken Catchment have disappeared since European settlement. Over 47% of what remains is on private land. Many of the plants and animals that rely on this habitat are now also threatened, and some are extinct. Therefore, the support of private landholders is essential for the ongoing conservation of Red Gum Wetlands.

Current threats include, **changes to natural flooding, temperature and flow regimes** (changes floodplain functions and can result in loss of native species and disrupts the delicate balance of the system, threatening the viability of the remnant), **poor timing of stock grazing and overgrazing** (causing loss of native species through selective grazing and trampling, hinders native plant regeneration, disturbs the soil and increases nutrient levels), **loss of ground habitat** (through dredging, land-filling, draining and overgrazing), **weed invasion, increases in nutrients** (favours weeds and causes excessive plant growth which restricts water movement and reduces dissolved oxygen).

Red Gum Wetland

Endangered in the Goulburn Broken Catchment

Management Tips



Weed control - develop an action plan.

Spot spray using species specific herbicide suitable for waterways to prevent seed set of target weeds (commonly Phalaris and Paspalum).

Prevent chemical residue entering any waterbodies.

Crash grazing while weeds are in flower (before seed-set) and while soils are dry over successive years can help control annual and perennial weeds.

#Mosaic or patch burning weedy, open areas in early summer immediately following exotic grass seed set (many are too green to burn in spring), could be an option.

Soon after fire spot spray weedy grasses with a grass-specific herbicide, avoiding native grasses.

Leave fallen timber for habitat

#Restore native understorey by direct seeding and / or replanting

Photo: Debbie Colbourne

Figure 11. An example of degraded Red Gum Wetland.

May require expert input in decision making and planning. See your local DSE or CMA representative for further advice.



Install nest boxes, particularly for Gliders

Grazing:

Fencing is critical. Avoid stock access when soils are wet, to prevent pugging and in spring and early summer to allow flowering and seed-set of native plants. Retain access to graze weedy sites during late summer if the site has exotic perennial grass.

Fox control is critical for Brolgas and other water birds, particularly when breeding.

Revegetate around remnants to buffer from introduced pasture and link to other remnants

Encourage natural regeneration by:

- *controlling rabbits,
- *reducing competition from grasses prior to seed fall and,
- *removing stock until seedlings are well established

Maintain, or restore natural flooding regimes

Photo: Debbie Colbourne

Figure 12. An example of degraded Red Gum Wetland, with pugging in the foreground.



Conservation Status

Red Gum Wetland is **threatened** in the Goulburn Broken Catchment

Victorian Riverina bioregion : **Endangered**

Murray Fan bioregion: **Endangered**

Goldfields bioregion : **Endangered**

Northern Inland Slopes bioregion : **Endangered**

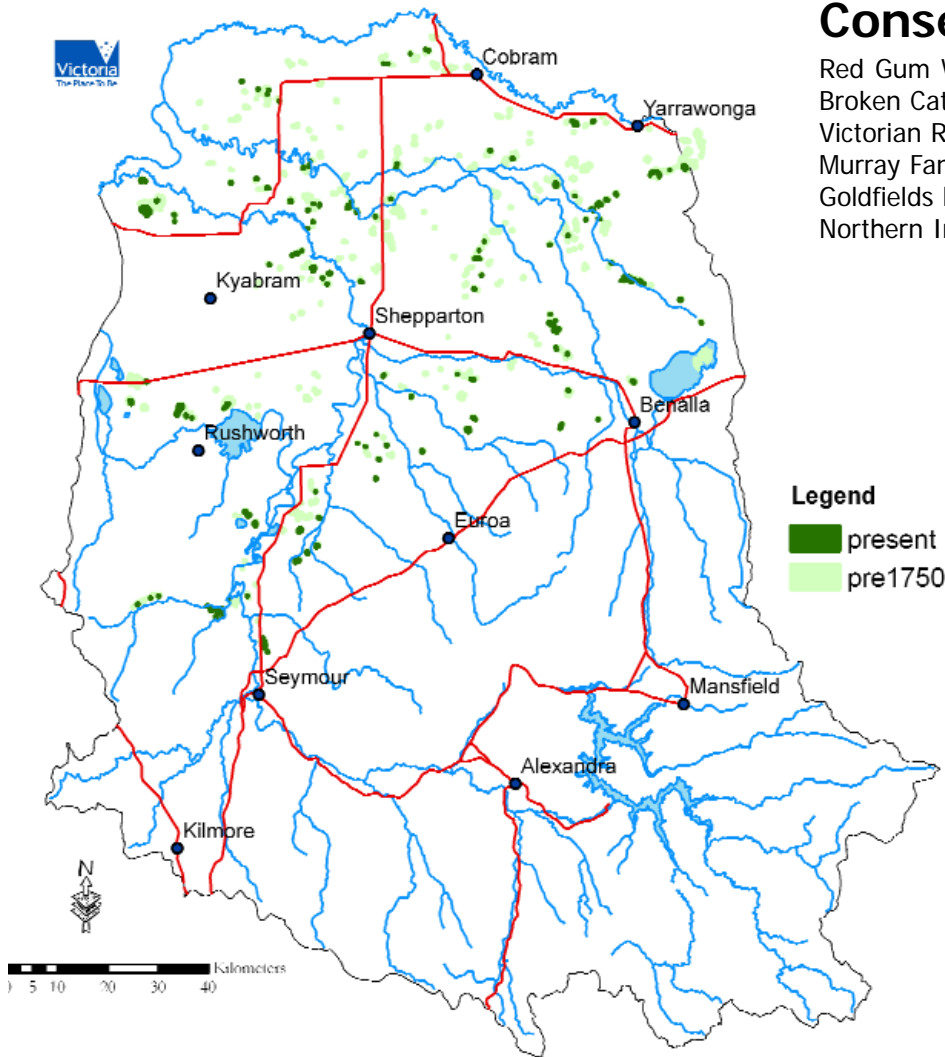


Figure 12. A representation of the pre-1750 and present day distribution of Red Gum Wetland and its mosaics and complexes in the Goulburn Broken Catchment. The boundaries of the vegetation have been exaggerated to allow for the small scale of the map. The map was produced from Base Data from DSE Corporate Library. The State of Victoria does not warrant the accuracy or completeness of information on this map. Any person using or relying upon such information does so on the basis that the State of Victoria shall bear no responsibility or liability whatsoever for any errors, faults, defects or omissions in the information.

References:

Berwick, S. (unpublished) *Pre-1750 EVC mapping, Goulburn Broken CMA*, Department of Natural Resources and Environment, Benalla

Department of Conservation and Natural Resources (1996) *Manual of Wetlands Management*, National Parks Service and Department of Natural Resources and Environment, East Melbourne.

Department of Natural Resources and Environment (2001) *Freshwater Ecosystems 3 Biodiversity Management Issues*, Department of Natural Resources and Environment, Melbourne.

Department of Sustainability and Environment (2004) *EVC Bioregional Conservation Status Table*, a support document to: Department of Natural Resources and Environment (2002) *Victoria's Native Vegetation Management - A Framework for Action Support Data*, NRE.


Land & Water Australia (2002) *River Landscapes Fact Sheets 1-13*, Land & Water Australia, Canberra.

Martin, D. and Robinson, J. (2001) Chapter 10 Enhancing streams by revegetating & erosion control from: Earl, G. et al. (2001) *Revegetation Guide for the Goulburn Broken Catchment*, Department of Natural Resources and Environment, Benalla.

Platt, S.J. (2002) *How to Plan Wildlife Landscapes: a guide for community organisations*, Department of Natural Resources and Environment, Melbourne.

Viridans Pty Ltd. (2004) *Victorian Fauna Display*, Viridans Pty Ltd., Melbourne.

Acknowledgments:

 This project was a partnership between the Goulburn Broken Catchment Management Authority and Department of Sustainability and Environment, and funded by NAP: *Australian Governments and local communities working together to prevent, repair and manage rising salinity and declining water quality across Australia*. Thanks to comments from Alison Oates, Biodiversity & Natural Resource Division, DSE and Glen Johnson, Water and Biodiversity Team, North East DSE; Jenni Nunan, GIS team, DSE, Benalla for producing the maps; for Salinity & Water feedback and comments from the Biodiversity Team in the Goulburn Broken and NorthEast, DSE; the DPI LINKS officers and CMOs, the AUSTRALIA GBCMA waterways and vegetation officers and to all who contributed photographs and support.

Compiled by: Mary Titcumb, Department of Sustainability and Environment

For further information about this publication, contact:

Department of Sustainability and Environment or Goulburn Broken Catchment Management Authority
Benalla (03) 5761 1611

© The State of Victoria, Department of Sustainability and Environment, May 2005.

ISBN 1-920742-11-5

Disclaimer

This publication may be of assistance to you but the State of Victoria and its employees do not guarantee that the publication is without flaw of any kind or is wholly appropriate for your particular purposes and therefore disclaims all liability for any error, loss or other consequence which may arise from you relying on any information in this publication.